

# MICRO CANAL

## MAXIMUM WARMTH, MINIMUM DIMENSIONS

The latest Jaga trench heating solution is only 60 mm high and 130 mm wide.

With small, but powerful dynamic Low-H<sub>2</sub>O heat exchangers and super-quiet fans that are no wider than a thermostatic radiator valve, it creates immense power.

Micro Canal combines minimalist aesthetics and architectural freedom with a power that breaks all temperature records!

Micro Canal integrates harmoniously with any interior. This provides every architect, designer or engineer the greatest possible design freedom on any project without making any compromises for the heating system.

By using the latest EC motors, Micro Canals consume up to 50% less electricity than traditional motors.



jaga

PRESENTING MICRO CANAL

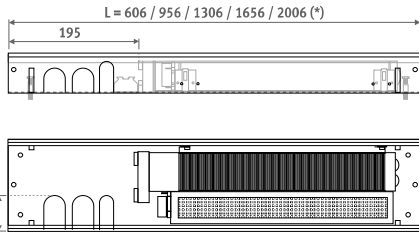


CREATE  
EMOTION

# MICRO CANAL

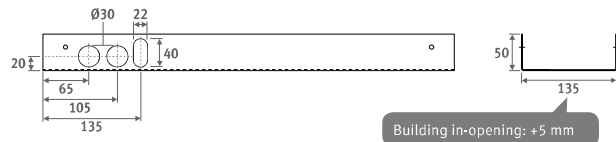
## DIMENSIONS (in mm)

### Inner casing



(\* In case of through-mounting, do not install the intermediate tops. Reduce length by 3 mm for each top.

### Outer casing

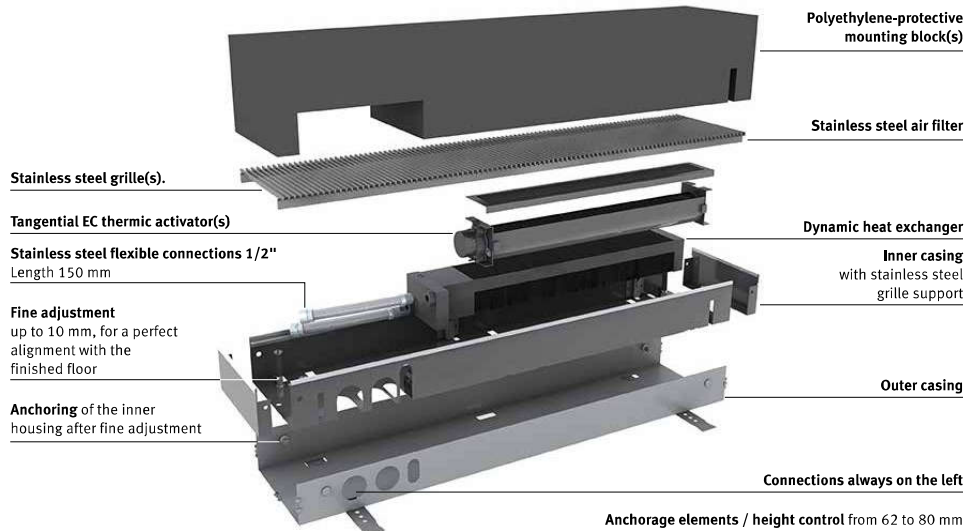


### HYDRAULIC CONNECTION

- one-sided 2-pipe connection on the left
- always install Micro Canal with the heat exchanger on the window or wall side
- 2 x 1/2" stainless steel hose included
- allow extra space for curtains, in between the window and the Micro Canal.
- The heat exchanger must always be kept accessible for maintenance purposes

- if the appliance is not mounted flat on the floor, the space between the bottom of the appliance and the floor should be filled with a stable filler material.

### COMPOSITION



### ORDERING CODE

code height length width grille  
**MIRF . 006 060 14 . /SSS**  
*(fill in grille code)*

### DELIVERY

Product is made to order, please contact our customer service team on 01531 631 533 to discuss your requirements.

With energy efficient EC motor

### ELECTRIC CONNECTION

- clamp connector for electrical connection 24 VDC to the left, to be connected via external power supply. Install a thermostat with a potential-free contact to control the water supply with the help of a zone valve. Micro Canal automatically switches on the activators via a temperature sensor.

# MICRO CANAL

MIRF.HHH LLL BB/XXX

H	L	B	HEATING			ACTIVATORS	SOUND PRESSURE*	POWER CONSUMPTION	AIR FLOW
			Watts	Watts	Watts				
			75/65/20°C	55/45/20°C	35/30/20°C				
60	600	140	390	234	98	1	18.0	1.6	29.3
	950		780	468	195	1	21.0	1.9	58.5
	1300		1170	702	293	1	22.8	2.2	88.0
	1650		1560	936	390	2	24.0	3.1	117.0
	2000		1950	1170	488	2	25.0	3.5	146.5

\* With an assumed room attenuation of 8 dB(A) / content of the room 75 m<sup>3</sup> / reverberation time 0.5 sec. / measured at 1 m height and 2 m from the appliance.

Correction factors & pressure drop: see "Technical info" chapter

### RECOMMENDED COMBINATIONS

	Heating
<b>Product</b>	Micro Canal
<b>Power supply</b>	Power supply: ordering code 37603.010002
<b>Connection set</b>	Connection set 92 with 2 lockshields CODY.LOA.00.3... <i>(fill in sleeve coupling code: see p. 312)</i>

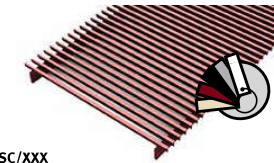
### OVERVIEW GRILLES

#### Stainless steel grilles



**SSS**  
stainless steel

#### Stainless steel grilles lacquered

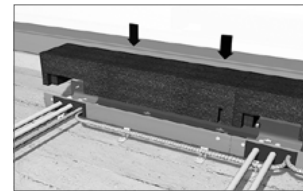


**SSC/XXX**  
stainless steel lacquered

To ensure perfect adherence of the lacquer coating, an extremely wear-resistant and UV-resistant polyester lacquer coating of the highest quality is used. Only in glossy (code 2..) and special colours 006, 005, 026, 028.

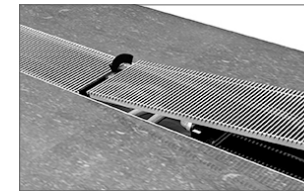
### STANDARD DELIVERY

#### ASSEMBLY & PROTECTION BLOCK



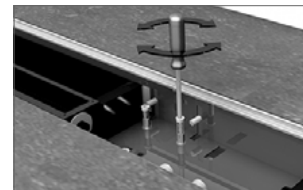
Install the polyethylene protective block(s) as protection on the construction site.

#### DESIGN GRILLES



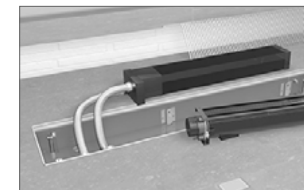
Continuous design grille of stainless steel grilles.

#### HEIGHT CONTROL



Double height adjustment by means of the anchoring on the outer casing and by fine adjustment with the bolts in the inner housing (adjustable from 62 to 80mm).

#### FLEXIBLE CONNECTION



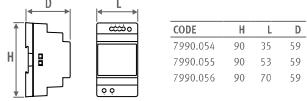
Stainless steel flexible hoses (150 to 250mm), enabling the internal mechanism to be removed completely for easy cleaning.

# MICRO CANAL - OPTIONS

## POWER SUPPLY DIN-RAIL MOUNTAGE



The guarantee is only valid if the original Jaga power supply is used.



CODE	H	L	D
7990.054	90	35	59
7990.055	90	53	59
7990.056	90	70	59

- for DIN-rail or wall mounting
- conformity UL60950 / UL508 / IEC 60950-1 / TUV EN61558-2-16 / Class 2
- output voltage 24 VDC
- input voltage 100 - 240 VAC
- screw connection
- LED indicator

CODE	Output Watts	Output current A
7990.054	36	1.5
7990.055	60	2.5
7990.056	92	3.9

Required power = sum of the power consumption of the devices

**MAXIMUM CABLE LENGTH**  
In function of the number of devices: see <http://www.jaga.co.uk/en/products/trench-heating/micro-canal>

**SEPARATE POWER SUPPLY**  
Waterproof power supply 24 VDC/30 Watt with waterproof cable gland.



**Warning:** Not suitable for installation in the floor duct.

- conformity: UL60950 - EN 60950 / Class 2
- output voltage 24 VDC
- input voltage 100 - 240 VAC
- dimensions L 145 x B 45 x H 30 cm

CODE	Output Watts	Output current A
37603.010002	30	1.25

**VALVES**  
See page 96

## JAGA TWO-WAY VALVE AND THERMOELECTRIC DRIVE 230 VAC



- only for mounting on the distributor, not in the Micro Canal!
- with varistor to protect against power surge
- with position indicator (open/closed)
- sleeve couplings have to be provided by the installer

CODE	Description
7990.409	180° - G1/2" F / NG 230V 2Watts
7990.411	180° - G3/4" F / NG 230V 2Watts

## VALVE UNIT

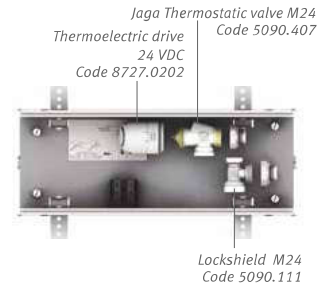


- length 350mm
- motorised thermostatic valve 24 VDC with lockshield
- outer casing with height control
- inner casing with stainless steel grille support
- stainless steel grille, natural coloured or lacquered
- protection block

CODE	Description
7522.00603514/SSS/VC	
7522.00603514/SSC/.../NC	

fill in colour code

**Warning:** Order sleeve couplings M24



## EMPTY HOUSING

To fill open spaces for a continuous installation.



- outer casing with height control
- inner casing with stainless steel grille support
- stainless steel grille, natural coloured or lacquered
- protection block(s)
- 2 head pieces

### empty housing with stainless steel grille

CODE	L
7522.00603514/SSS	350
7522.00606014/SSS	600
7522.00609514/SSS	950
7522.00613014/SSS	1300
7522.00616514/SSS	1650
7522.00620014/SSS	2000

### empty housing with lacquered stainless steel grille

CODE	L
7522.00603514/SSC/...	350
7522.00606014/SSC/...	600
7522.00609514/SSC/...	950
7522.00613014/SSC/...	1300
7522.00616514/SSC/...	1650
7522.00620014/SSC/...	2000

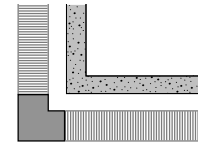
enter colour code

## CORNER PIECE



- aluminium cover plate in stainless steel effect (SSS), or lacquered in other Jaga colours (SSC)
- outer casing with anchorage elements
- polyethylene-protective mounting block(s)
- fully assembled inner housing with stainless steel grille support
- height adjustment with fine adjustment for alignment with the finished floor

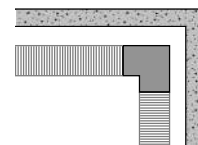
### Outer corner



CODE	Description
7522.00602014/SSS/02	Natural
7522.00602014/SSC/.../02	lacquered

enter colour code

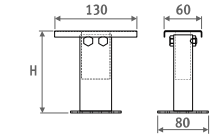
### Inner corner



CODE	Description
7522.00602014/SSS/01	Natural
7522.00602014/SSC/.../01	lacquered

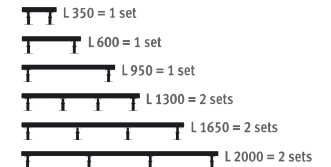
enter colour code

## FEET WITH HEIGHT ADJUSTMENT FOR RAISED FLOORS



- lacquered in dark grey RAL 7024.
- easy installation by means of "stainless steel spring system"
- 1 set includes 2 height adjusting controls

### Number of sets per Micro Canal



CODE	H
5207.05070000	50 > 70 mm
5207.08130000	80 > 130 mm
5207.13230000	130 > 230 mm
5207.20300000	200 > 300 mm