

HEATING | COOLING | VENTILATION

PLAY

Colourful, fun, safe

  
Versatile

HEATING, COOLING & VENTILATION

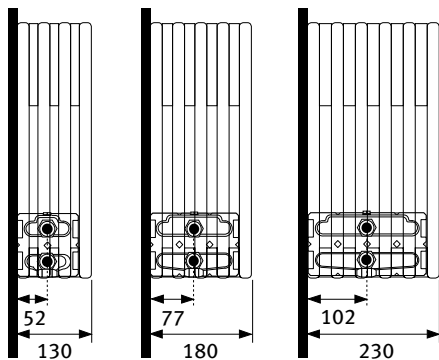
Beechmount Home Park, Navan, Co. Meath  
Tel: 00 353 46 902 9444 Email: [sales@versatile.ie](mailto:sales@versatile.ie)

[www.versatile.ie](http://www.versatile.ie)

## Dimensions

Product code: PLAW

Type 10/11   Type 15/16   Type 20/21



H	350	500	650	---
L	600	800	1000	1200

Dimensions in mm

## Colours

Play range



**WHI** Play White



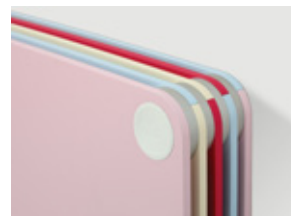
**BLA** Play Black



**PIA** Play Piano



**BOY** Play4Boy

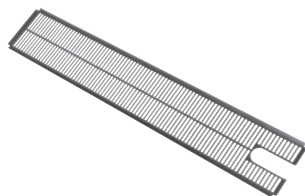


**GIR** Play4Girl

## Options

Base Grille

Closes the bottom of the casing  
Ordering code: 5641.000



DBE version

Dynamic Boost Effect technology offers even greater power and efficiency.

Oxygen version

For healthy heat and clean air.

## Outputs

Outputs in watts at 75/65/20°C & 55/45/20°C, in accordance with EN442

### Available in models

ORDER CODE: **PLAW**   **code**   **height**   **length**   **type**   **colour**   (Example order code shown is for a 350mm high radiator, 600mm long, type 15, colour Piano)

Type 10						Type 15						Type 20					
H		600	800	1000	1200	H		600	800	1000	1200	H		600	800	1000	1200
350	75/65/20	529	705	881	1057	350	75/65/20	805	1074	1342	1610	350	75/65/20	1104	1472	1840	2208
	55/45/20	262	349	436	523		55/45/20	400	533	667	800		55/45/20	551	735	919	1102
500	75/65/20	591	788	985	1182	500	75/65/20	925	1234	1542	1850	500	75/65/20	1284	1712	2140	2568
	55/45/20	290	386	483	579		55/45/20	456	609	760	912		55/45/20	637	849	1062	1274
650	75/65/20	653	870	1088	1306	650	75/65/20	1040	1386	1733	2080	650	75/65/20	1454	1938	2423	2908
	55/45/20	317	423	529	635		55/45/20	509	679	849	1018		55/45/20	717	956	1195	1434

ORDER CODE: **PLAW**   **code**   **height**   **length**   **type**   **colour**   (Example order code shown is for a 350mm high radiator, 600mm long, type 11, colour black)

Twin type 11						Twin type 16						Twin type 21					
H		600	800	1000	1200	H		600	800	1000	1200	H		600	800	1000	1200
350	75/65/20	583	777	971	1165	350	75/65/20	870	1160	1450	1740	350	75/65/20	1217	1622	2028	2434
	55/45/20	279	372	465	558		55/45/20	413	551	688	826		55/45/20	573	763	954	1145
500	75/65/20	685	913	1141	1369	500	75/65/20	1040	1386	1733	2080	500	75/65/20	1461	1948	2435	2922
	55/45/20	327	436	544	653		55/45/20	493	657	822	987		55/45/20	689	919	1149	1378
650	75/65/20	778	1037	1296	1555	650	75/65/20	1187	1582	1978	2374	650	75/65/20	1663	2218	2772	3326
	55/45/20	369	492	615	738		55/45/20	562	750	937	1125		55/45/20	786	1049	1311	1573

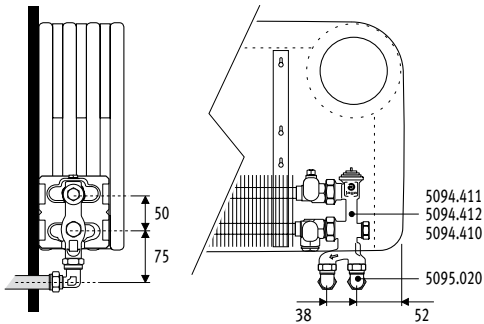
### Supplied as Standard

- Low-H<sub>2</sub>O heat exchanger with pre-mounted brackets
- One piece casing, completely mounted - consisting of lacquered MDF panels with anodised aluminium spacer rings
- Suitable for connection left or right below, either to the wall or to the floor
- Pencil-proof grille
- Extended air vent 1/8" and drain plug 1/2"

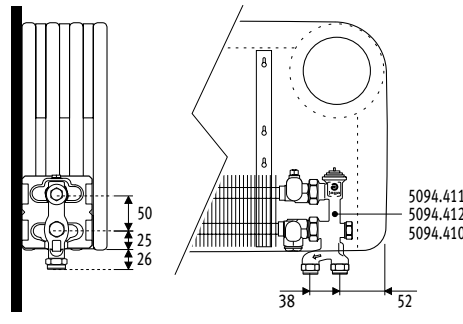
## Connections

### With vertical pro thermostatic valve

To the wall



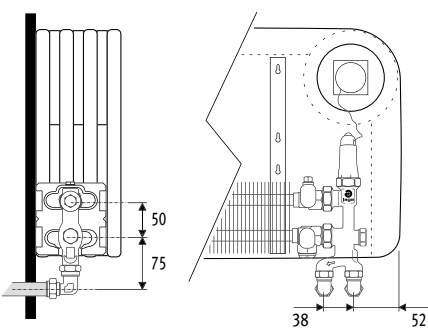
To the floor



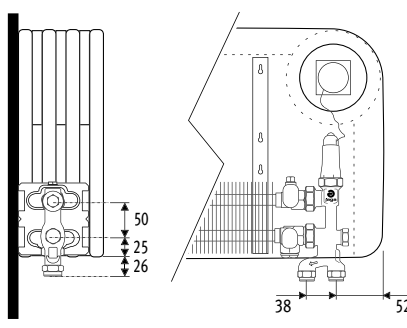
- For connection to wall or floor
- Thermostat valve without capillary included
- Instructions: use with an electrically controlled zone valve, a manual head or thermostatic head with an external sensor.
- Do not use with standard thermostatic head

### With vertical pro integrated thermostatic valve with control

To the wall



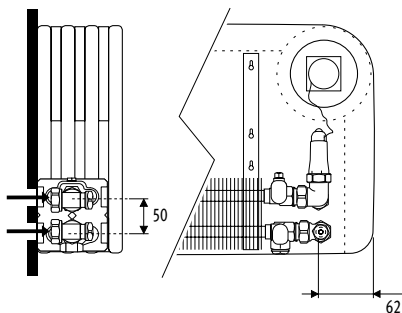
To the floor



- For connection to wall or floor
- Thermostat valve with capillary included
- Controls integrated in the front panel

### With vertical double angled thermostatic valve with integrated control

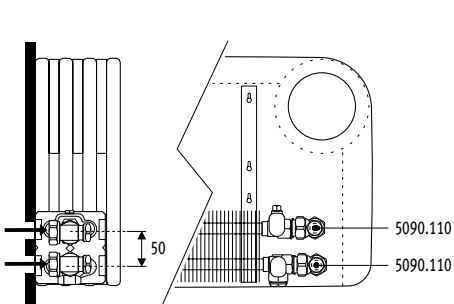
To the wall



- The casing conceals the connection to the wall
- Thermostat valve with capillary included
- Controls integrated in the front panel

### With 2 lockshields 1/2"

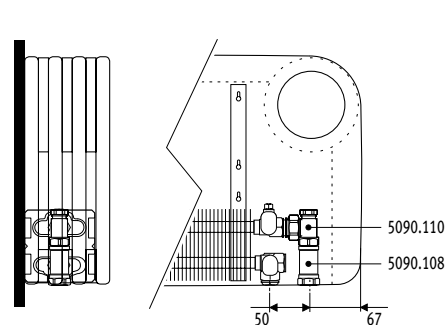
To the wall



- Connection to the floor
- Only for remote control
- No integral thermostatic control
- With lockshield on inlet and return

### With lockshield 1/2" and extension pipe

To the floor



- Same end connection to wall concealed by casing
- Only for remote control
- No integral thermostatic control
- With lockshield on inlet and return

Example: PLAW/020/140/10/BLA/**FR**/TPB

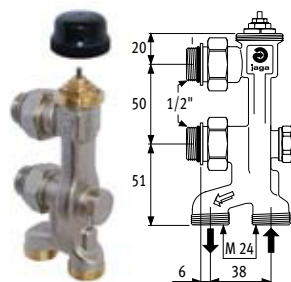
FL = floor left

**FR** = floor right

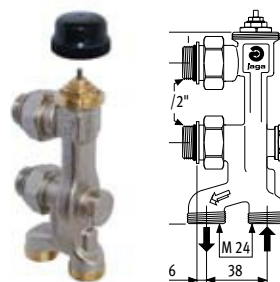
WL = wall left

WR = wall right

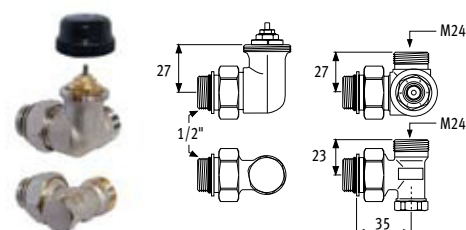
### Vertical pro thermostatic valve



Description	Code
2-pipe, standard Kv	5094.411
2-pipe, reduced Kv	5094.412
1-pipe, standard Kv	5094.410

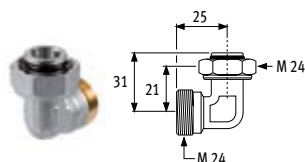


Description	Code
2-pipe, standard Kv	TPB
2-pipe, reduced Kv	TPS
1-pipe, standard Kv	TPO



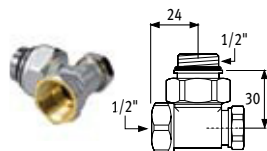
Ordering code: TIB

### Curve 90° M24 x M24



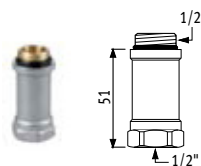
Ordering code: 5095.020

### Lockshield 1 1/2"



Description	Code
nickle-plated	5090.110

### Extension pipe



Description	Code
nickle-plated	5090.108

## Sleeve couplings

### For Vertical Pro Jaga and Vertical Double Angled

#### For flexible steel or copper tube

Description Diameter	Code
M24 x 10/1	5094.110
M24 x 12/1	5094.112
M24 x 14/1	5094.114
M24 x 15/1	5094.115
M24 x 16/1	5094.116
M24 x 18/1	5094.118

#### For synthetic tube

Description Diameter	Code
M24 x 12/2	5094.212
M24 x 14/2	5094.214
M24 x 16/1.5	5094.219
M24 x 16/2	5094.216
M24 x 17/2	5094.217
M24 x 18/2	5094.218

#### For RPE/ALU Tube

Description Diameter	Code
M24 x 14/2	5094.314
M24 x 16/2	5094.316
M24 x 16/2.2	5094.326
M24 x 18/2	5094.318

#### Steel tube for C.H.

Description Diameter	Code
M24 x 1/2"	5094.501
M24 x 3/8"	5094.503

### For Lockshield

#### For flexible steel or copper tube

Description Diameter	Code
1/2" x 10/1	5098.110
1/2" x 10/1	5098.112
1/2" x 10/1	5098.114
1/2" x 10/1	5098.115
1/2" x 10/1	5098.116
1/2" x 10/1	5098.118

#### For synthetic tube

Description Diameter	Code
1/2" x 12/2	5098.212
1/2" x 14/2	5098.214
1/2" x 16/1.5	5098.219
1/2" x 16/2	5098.216
1/2" x 17/2	5098.217
1/2" x 18/2	5098.218

#### For RPE/ALU Tube

Description Diameter	Code
1/2" x 14/2	5098.314
1/2" x 16/2	5098.316
1/2" x 16/2.2	5098.326
1/2" x 18/2	5098.318

#### Steel tube for C.H.

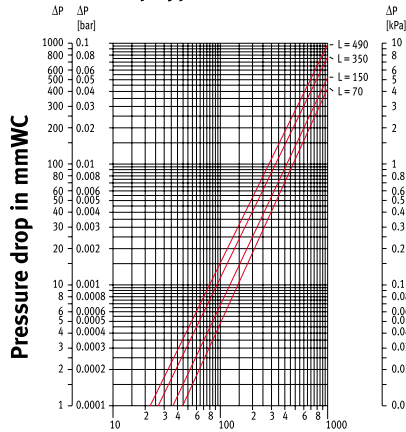
Description Diameter	Code
1/2" x 1/2"	5094.502
1/2" x 3/8"	5094.504

#### Short coupling for flexible steel tube or copper tube diameter 15 mm

Description Diameter	Code
1/2" x 15/1	5098.015

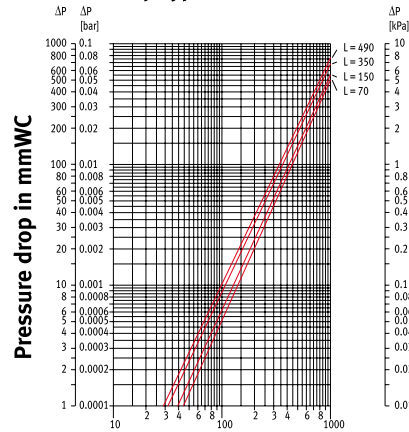
## Pressure drops

Pressure drop type 10



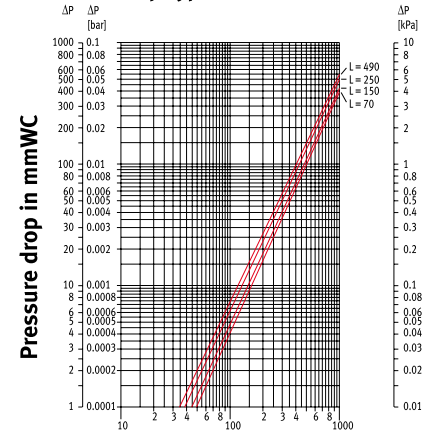
Water flow in kg/h

Pressure drop type 15



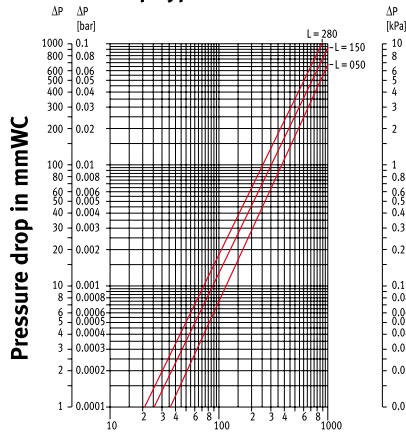
Water flow in kg/h

Pressure drop type 20



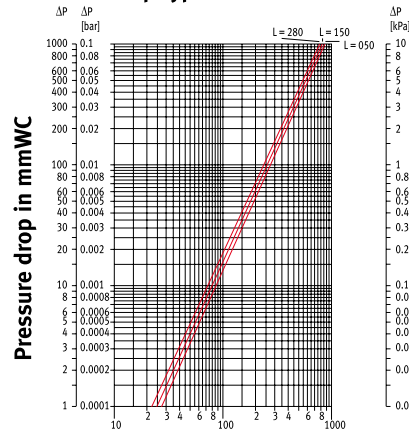
Water flow in kg/h

Pressure drop type 11



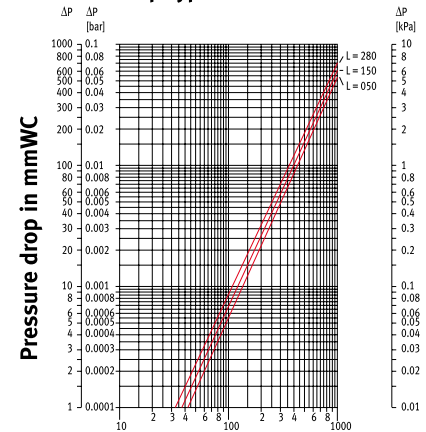
Water flow in kg/h

Pressure drop type 16



Water flow in kg/h

Pressure drop type 21



Water flow in kg/h

## Weight & water content

Water content in litres

Type	L/metre
07	0.51
08	0.63
10	0.65
11	1.33
15	0.98
16	1.98
20	1.32
21	2.66



## Correction factors

### Average correction factors according to EN442 - 75/65/20°C

Tv	Tl	Tr > 20	25	30	35	40	45	50	55	60	65	70	75	80	85
90	20	0.62	0.68	0.74	0.80	0.87	0.93	1.00	1.07	1.14	1.21	1.28	1.36	1.43	1.50
	24	0.52	0.58	0.64	0.70	0.76	0.83	0.89	0.96	1.03	1.10	1.17	1.24	1.31	1.38
85	20	0.56	0.62	0.68	0.74	0.80	0.87	0.93	1.00	1.07	1.14	1.21	1.28	1.36	
	24	0.47	0.52	0.58	0.64	0.70	0.76	0.83	0.89	0.96	1.03	1.10	1.17	1.24	
80	20	0.50	0.56	0.62	0.68	0.74	0.80	0.87	0.93	1.00	1.07	1.14	1.21		
	24	0.41	0.47	0.52	0.58	0.64	0.70	0.76	0.83	0.89	0.96	1.03	1.10		
75	20	0.44	0.50	0.56	0.62	0.68	0.74	0.80	0.87	0.93	1.00	1.07			
	24	0.36	0.41	0.47	0.52	0.58	0.64	0.70	0.76	0.83	0.89	0.96			
70	20	0.39	0.44	0.50	0.56	0.62	0.68	0.74	0.80	0.87	0.93				
	24	0.31	0.36	0.41	0.47	0.52	0.58	0.64	0.70	0.76	0.83				
65	20	0.34	0.39	0.44	0.50	0.56	0.62	0.68	0.74	0.80					
	24	0.26	0.31	0.36	0.41	0.47	0.52	0.58	0.64	0.70					
60	20	0.29	0.34	0.39	0.44	0.50	0.56	0.62	0.68						
	24	0.21	0.26	0.31	0.36	0.41	0.47	0.52	0.58						
55	20	0.24	0.29	0.34	0.39	0.44	0.50	0.56							
	24	0.17	0.21	0.26	0.31	0.36	0.41	0.47							
50	20	0.19	0.24	0.29	0.34	0.39	0.44								
	24	0.13	0.17	0.21	0.26	0.31	0.36								
45	20	0.15	0.19	0.24	0.29	0.34									
	24	0.09	0.13	0.17	0.21	0.26									
40	20	0.11	0.15	0.19	0.24										
	24	0.06	0.09	0.13	0.17										
35	20	0.05	0.08	0.12											
	24	0.03	0.06	0.09											

#### KEY

Tv = flow temperature  
Tr = return temperature  
Tl = desired air temperature

The indicated outputs with  $\Delta T$  50°C and  $\Delta T$  30°C are the exact outputs.  $\Delta T$  50°C outputs are measured in accordance with EN442 and  $\Delta T$  30°C outputs are calculated according to EN442.

An average correction factor is given in this table for outputs at other  $\Delta T$  and is applicable for all dimensions.

## How to choose the right radiator?

### Rapid estimation of heat losses

Calculate the volume of the room (L x W x H) and multiply this by the Watts/m<sup>3</sup> figure given in the table below. Choose according to the level of insulation and the desired room temperature.

Insulation	20°	24°
excellent	45	55
good	65	75
average	85	95
poor	100	115

Required output in Watts/m<sup>3</sup>

### Example

Use the table to determine the relevant correction factor with a water temperature of 80/60°C with a room temperature of 24°C.

The correction factor = 0.89

Required output 1000 watts : 1000 divided by 0.89 = 1124 watts therefore search in this leaflet's standard output table for a product with an output of at least 1124 watts. Alternatively use the "Radiator Finder" search function on [www.jaga.co.uk](http://www.jaga.co.uk) to identify all Jaga heating products with this required output.



Output calculated in accordance with EN442, at a water temperature of 75/65°C and a room temperature of 20°C ( $\Delta T=50$ ).

VERSATILE

Versatile Agencies, Beechmount Homepark, Navan, Co.Meath, Ireland  
T +353 46 9029444 | F +353 46 9027705 | E [sales@versatile.ie](mailto:sales@versatile.ie)



# Jaga Guarantee Information

- 1** The guarantee is valid only if the equipment is properly and correctly used, by its first owner and if installed in accordance with the norms and instructions as detailed in the instruction leaflet and current industry standard practices.
- 2** The guarantee only applies to the equipment and the spare parts supplied by Jaga. Jaga has the choice between repair and replacement of the equipment or the spare parts. If any modifications have been made by Jaga to the standard product design, Jaga reserves the right to replace the guaranteed equipment with equivalent products or spare parts.
- 3** The period of guarantee is mentioned in this certificate. The guarantee decreases every year on a straight line basis by an equal percentage in order to reach a zero guarantee at the end of the guarantee period (e.g. for a period of 10 years the annual decrease of the guarantees 10% of the invoiced value). Repaired or replaced product is guaranteed through to the end of the original guarantee period.
- 4** The guarantee is valid only on products displaying the appropriate identification information concerning product type and series. No guarantee is granted on equipment or spare parts lacking this information, on equipment where this information has been removed or altered, or on equipment that has been repaired or modified by persons not authorised by Jaga to carry out this work.
- 5** The customer is responsible for any damage caused as a result of errors in installation or use of incorrect fittings, or for any damage caused by electrical connections, faulty or damaged electrical installations or appliances, erroneous voltage or hydraulic pressure and all other errors not directly related to the product delivered by Jaga. The guarantee is also revoked when unsuitable parts or components are used. The guarantee for our heat exchangers is not valid if they are regularly drained, or if they are heated by means of industrial water, steam or water saturated by excessive quantities of oxygen. The quality of the system after has to be in accordance with the VDI 2035-2 directives. The guarantee is also not applicable if the heat exchangers are placed in unsuitable atmospheric surroundings, such as but not exclusively ammonia, caustic substances etc.
- 6** This guarantee excludes damage due to incorrect handling and/or use of the equipment, or due to formation of lime deposits, incorrect use of the safety valve, or to all equipment that is incorporated into the building in a way that means it cannot be accessed normally.
- 7** Any work undertaken or product supplied as a result of a guarantee claim that proves not to be valid will be charged for. Product supplied will be invoiced at the customer's standard purchasing terms, and labour will be charged at £50 per hour with a minimum labour charge of £200.
- 8** The guarantee period starts from the date of the invoice for supply of the products covered by the guarantee. If the invoice is not available, the date of production will be used based on the product ID number/series.
- 9** Only the courts of judicial district Hasselt (Belgium) are authorised to deal with disputes arising from this guarantee. It will apply Belgian law even when sales involved are subjects of EU member states as well as non-EU member countries.

