

YONOH

Yonoh is a design studio founded in 2006 by Clara del Portillo and Alex Selma, in Valencia, Spain. Uniting their creative inquisitiveness they create work on product graphic and interior design. Yonoh works on projects that differ for their simplicity and functionality, designs that exude freshness and uniqueness.

During its career Yonoh has been awarded with the most prestigious design prizes worldwide as Red Dot, IF design award, Good Design or Wallpaper* Design Award among others.

Clara and Alex, industrial designer by training, developed their careers separately during years until they met on a young designers exhibition in 2004. At the end of 2006 they present their first collection as Yonoh, an ambigram that represents the bicephalus character of the studio. From 2014 they collaborate as associate teachers with the Cardenal Herrera CEU university in Valencia and give lectures and workshops around the world promoting the Yonoh way of work.

In 2021, the studio celebrates its 15th anniversary, after receiving several awards throughout its history.

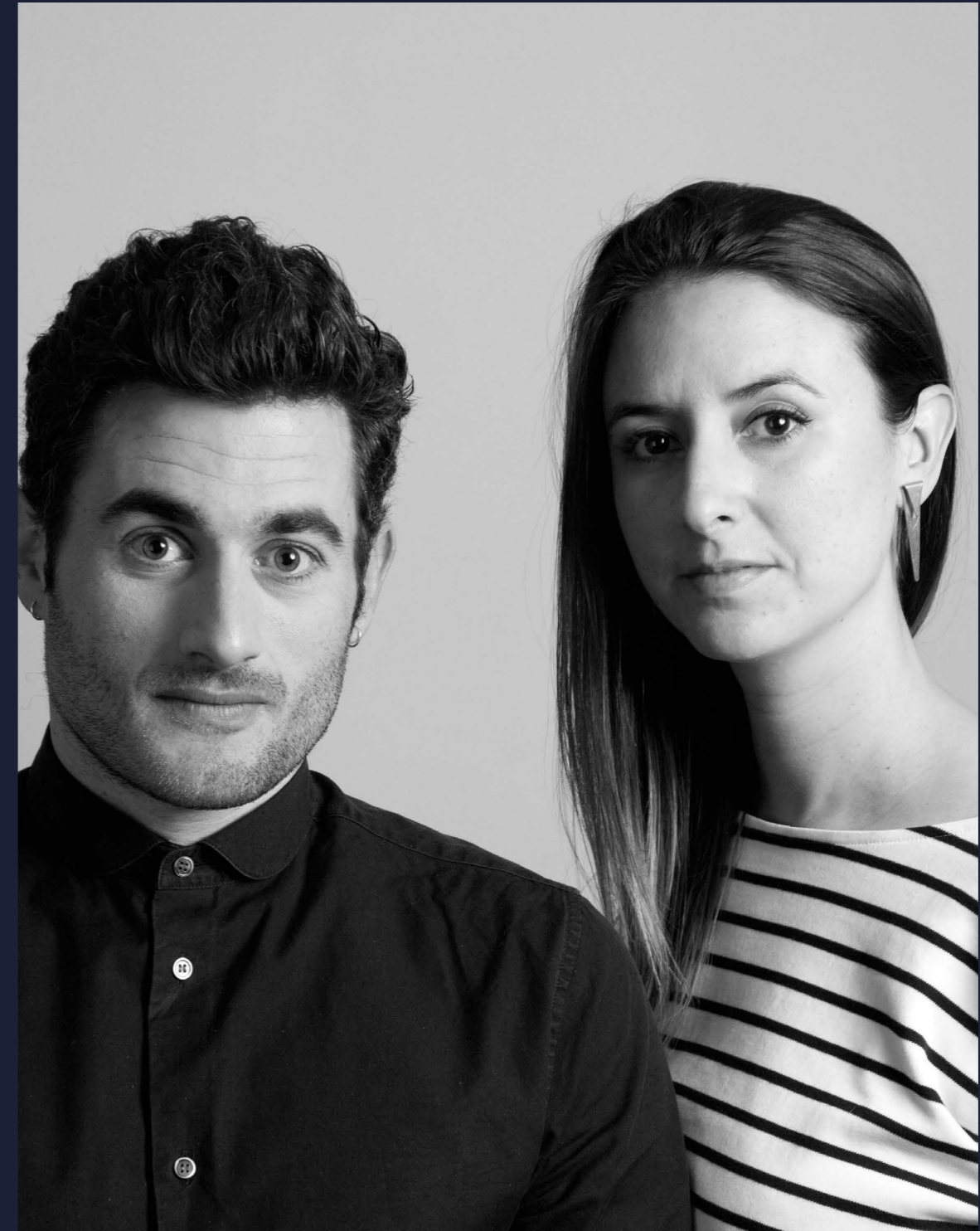
Yonoh es un estudio de diseño fundado en 2006 por Clara del Portillo y Alex Selma, en Valencia. Uniendo sus inquietudes creativas trabajan en diseño de producto, gráfico e interiorismo. Yonoh crea proyectos que se diferencian por su simplicidad y funcionalidad, diseños que respiran fresca y singularidad.

Yonoh ha sido galardonado con los premios de diseño mas prestigiosos a nivel internacional, como el Red Dot, IF Design Award, Good Design o Wallpaper Design Award entre otros.

Clara y Alex se formaron como diseñadores industriales con distintas trayectorias que confluyen en 2004 en una exposición de jóvenes diseñadores. A finales de 2006 presentan su primera colección como un único estudio, Yonoh, un ambigrama que hace referencia al carácter bicéfalo del estudio. Desde el año 2014 colaboran como profesores asociados en la universidad Cardenal Herrera CEU de Valencia además de recorrer el mundo dando charlas sobre la filosofía de trabajo del estudio.

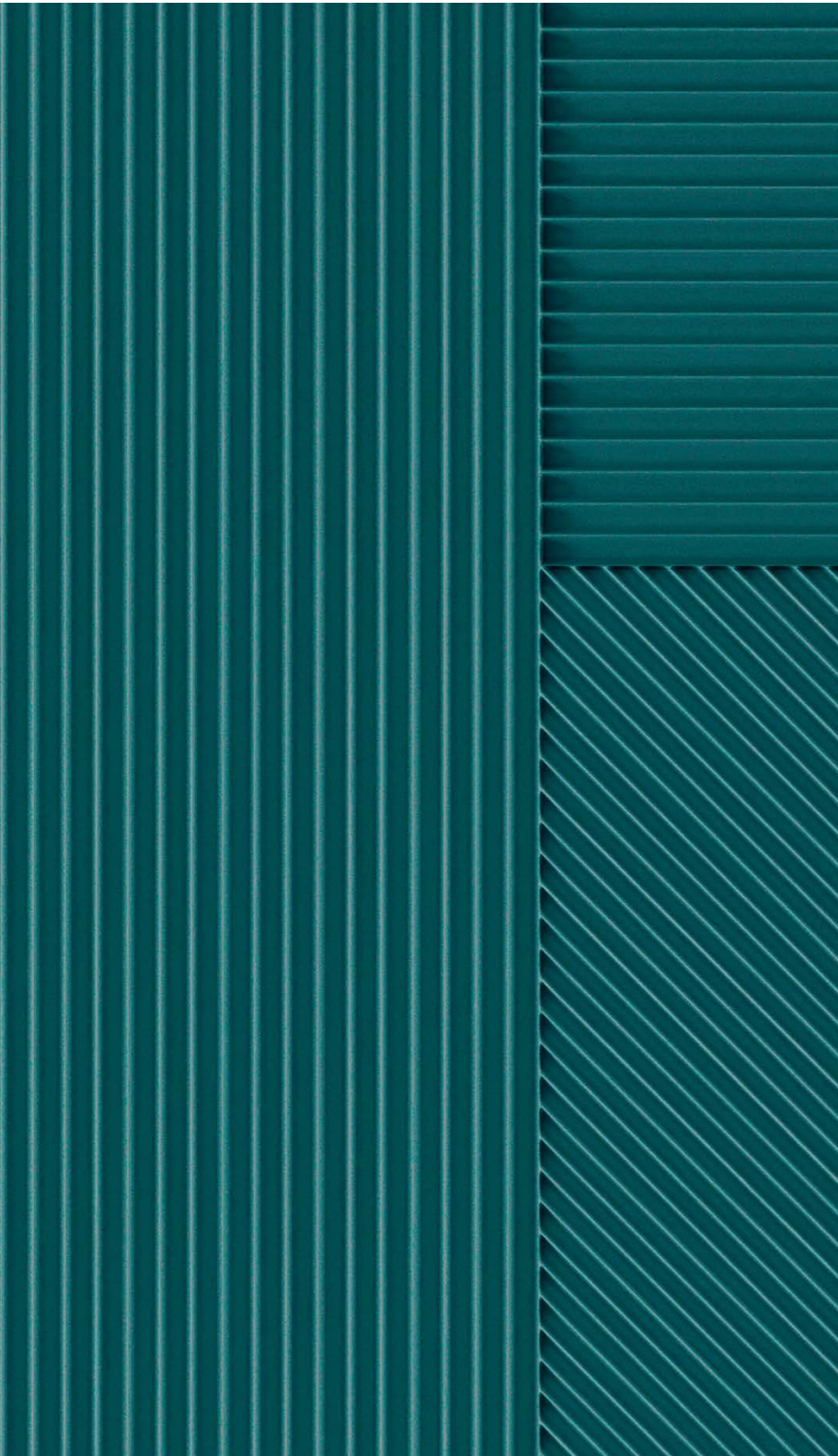
En 2021, Yonoh celebra su 15 aniversario tras recibir varios premios a lo largo de toda su trayectoria.

yonoh Creative Studio



Alex Selma — Clara del Portillo

LINS by YONOH



New colours have been added to LINS by YONOH. As with the collection's existing colours, Navy, Green and Bordeaux's crisscrossing lines and interplay with light transform wall surfaces into huge murals. Instead of taking advantage of lines on different levels, "LINS by YONOH" focuses on their subtle delicacy, using shadow play on the 20x20 tile surface to trigger ongoing volumetric effects.

LINS by YONOH presenta nuevas tonalidades para su colección. Navy, Green y Bordeaux generan composiciones que, junto con el resto de tonalidades, juega con la luz para conseguir un efecto visual a partir de cruces de líneas, creando composiciones con las que generar murales infinitos. LINS by YONOH apuesta por la sutileza de las líneas en lugar de profundizar en el desnivel, consiguiendo así que sea la propia delicadeza de las líneas las que hagan juegos de sombras que generan volúmenes infinitos en formato 20x20.



LINS NAVY

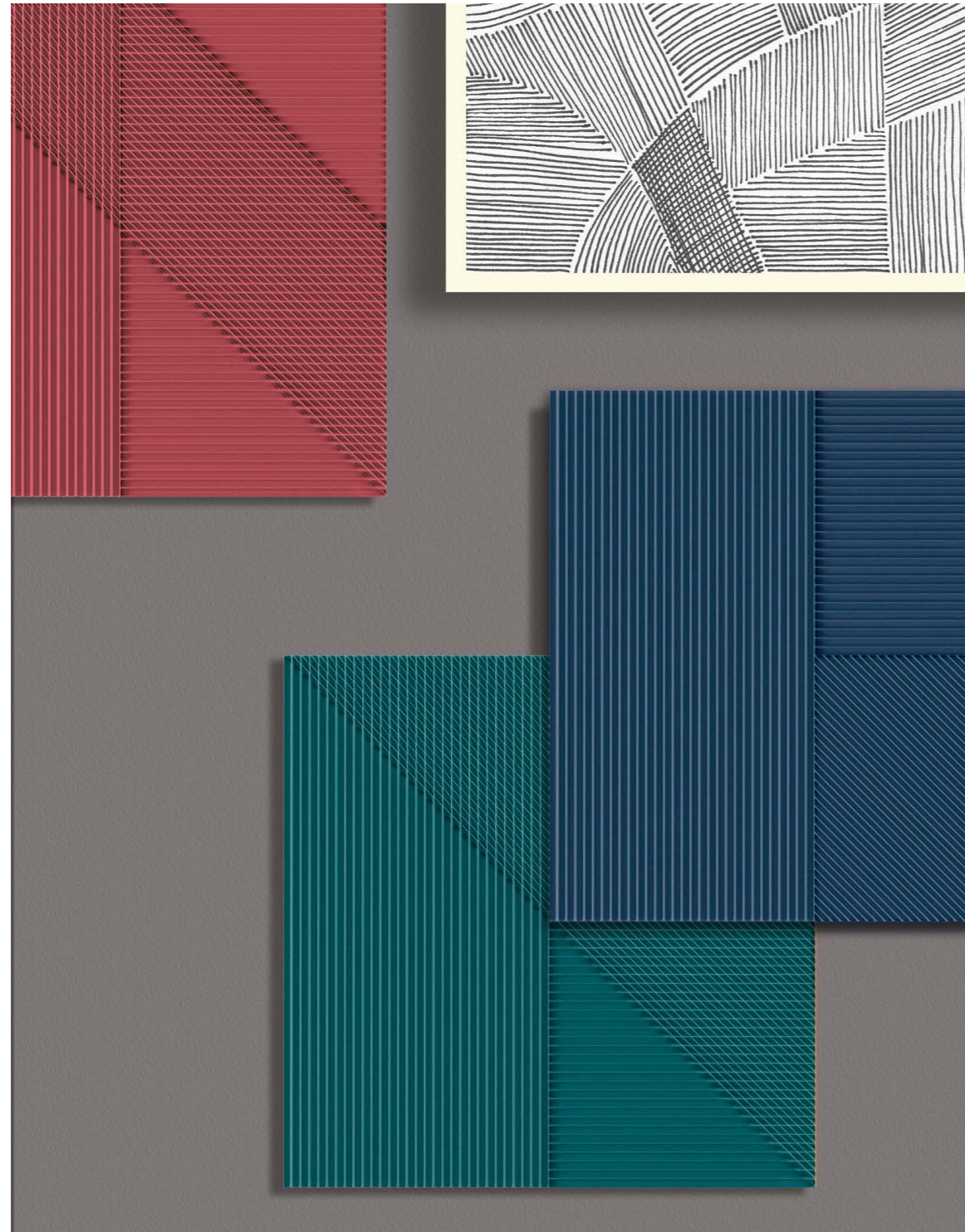


LINS BORDEAUX



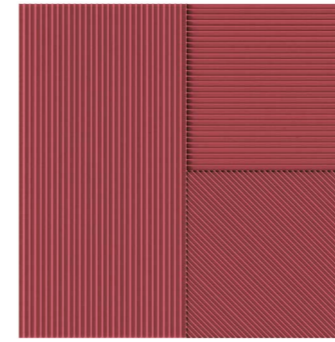
LINS GREEN

LINS by YONOH

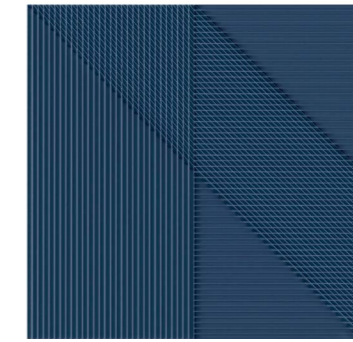


white body
20x20

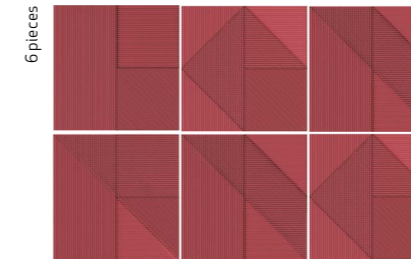
NEW COLORS



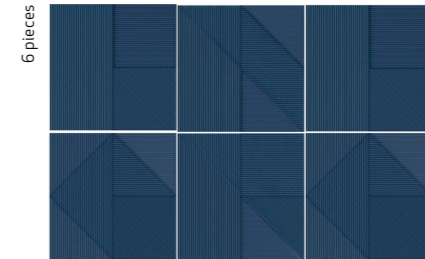
31688 LINS BORDEAUX
Q7 (20x20 cm — 77/8x77/8")
4 patterns



31686 LINS NAVY
Q7 (20x20 cm — 77/8x77/8")
4 patterns

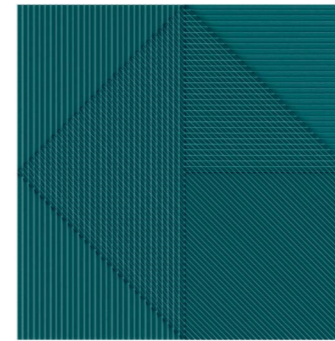


6 pieces

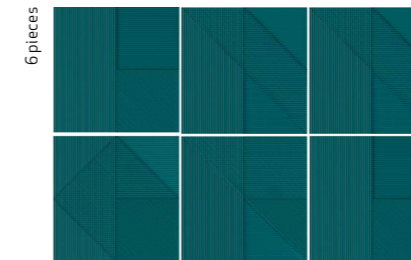


6 pieces

Random designs in box.
Diseños aleatorios por caja.

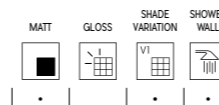


31687 LINS GREEN
Q7 (20x20 cm — 77/8x77/8")
4 patterns



6 pieces

TECHNICAL CHARACTERISTICS



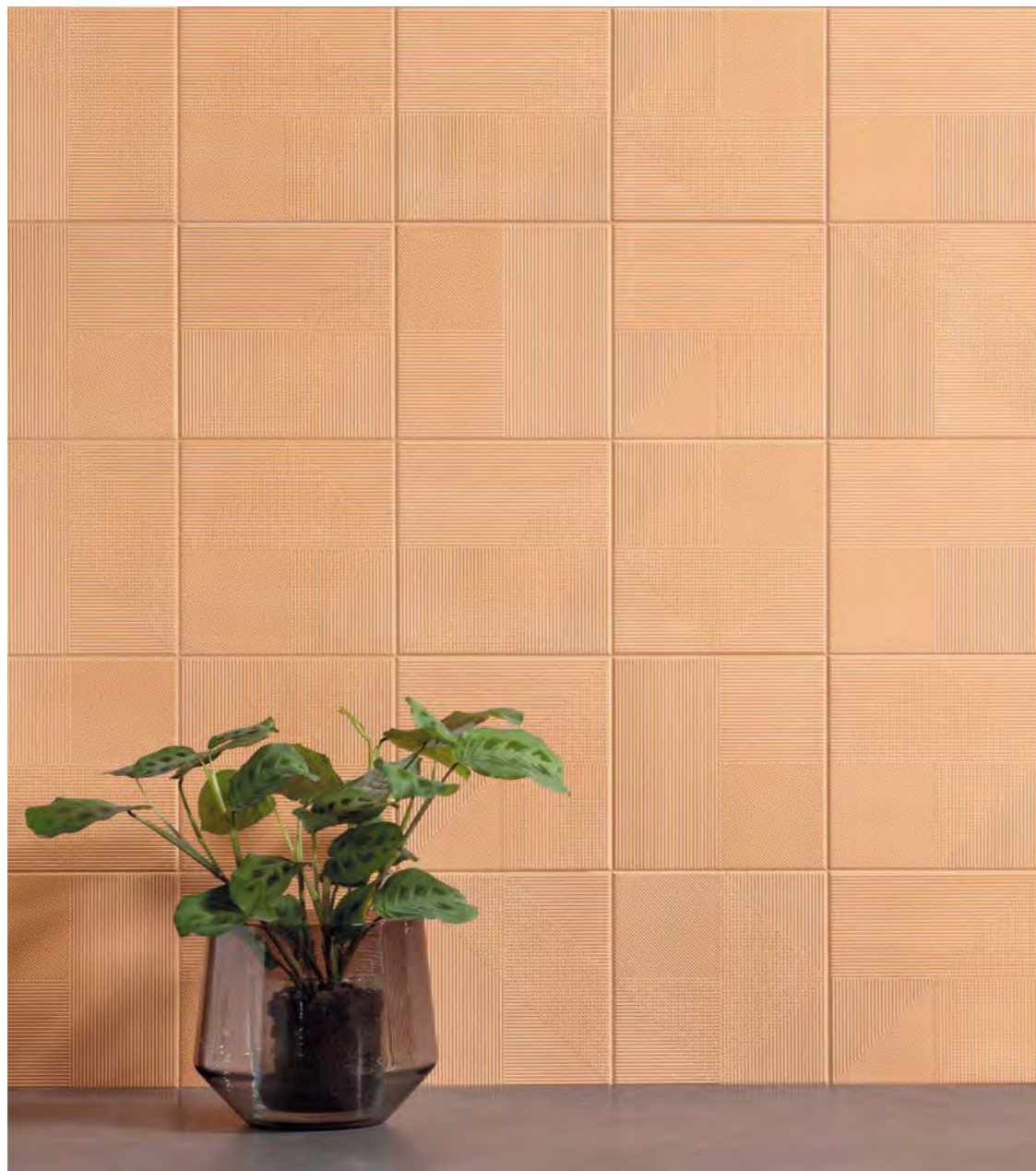
LINS

PACKING

UNIT	m ²	PIECES m ²	PIECES sq ft	PIECES BOX	m ² BOX	sq ft BOX	WEIGHT BOX (kg)	WEIGHT BOX (lb)	BOXES PALLET	m ² PALLET	sq ft PALLET	cm PALLET	THICKNESS (mm)	THICKNESS (in)
LINS	•	25	2.32	26	1.04	11.19	14.27	31.39	72	74.88	806	120x80x96	8	0.31

LINS by YONOH — white body

LINS BY YONOH



LINS SUNSET/20x20

LINS by YONOH plays with light, using crisscrossing lines to generate visual effects perfect for transforming wall surfaces into huge murals. LINS by YONO' takes advantage of the subtlety of lines as opposed to differing levels, so that shadow play and volumes are generated by the actual delicacy of the lines. The collection's choice of neutral Mediterranean colours reflects its restful spirit.

LINS by YONOH, juega con la luz para conseguir un efecto visual a partir de cruces de líneas, composiciones con las que generar murales infinitos. LINS by YONOH apuesta por la sutileza de las líneas en lugar de profundizar en el desnivel, consiguiendo así que sea la propia delicadeza de las líneas las que hagan juegos de sombras que generan volúmenes. La selección de colores neutros y mediterráneos forman parte del espíritu tranquilo de la colección diseñada.



LINS BROWN/20x20



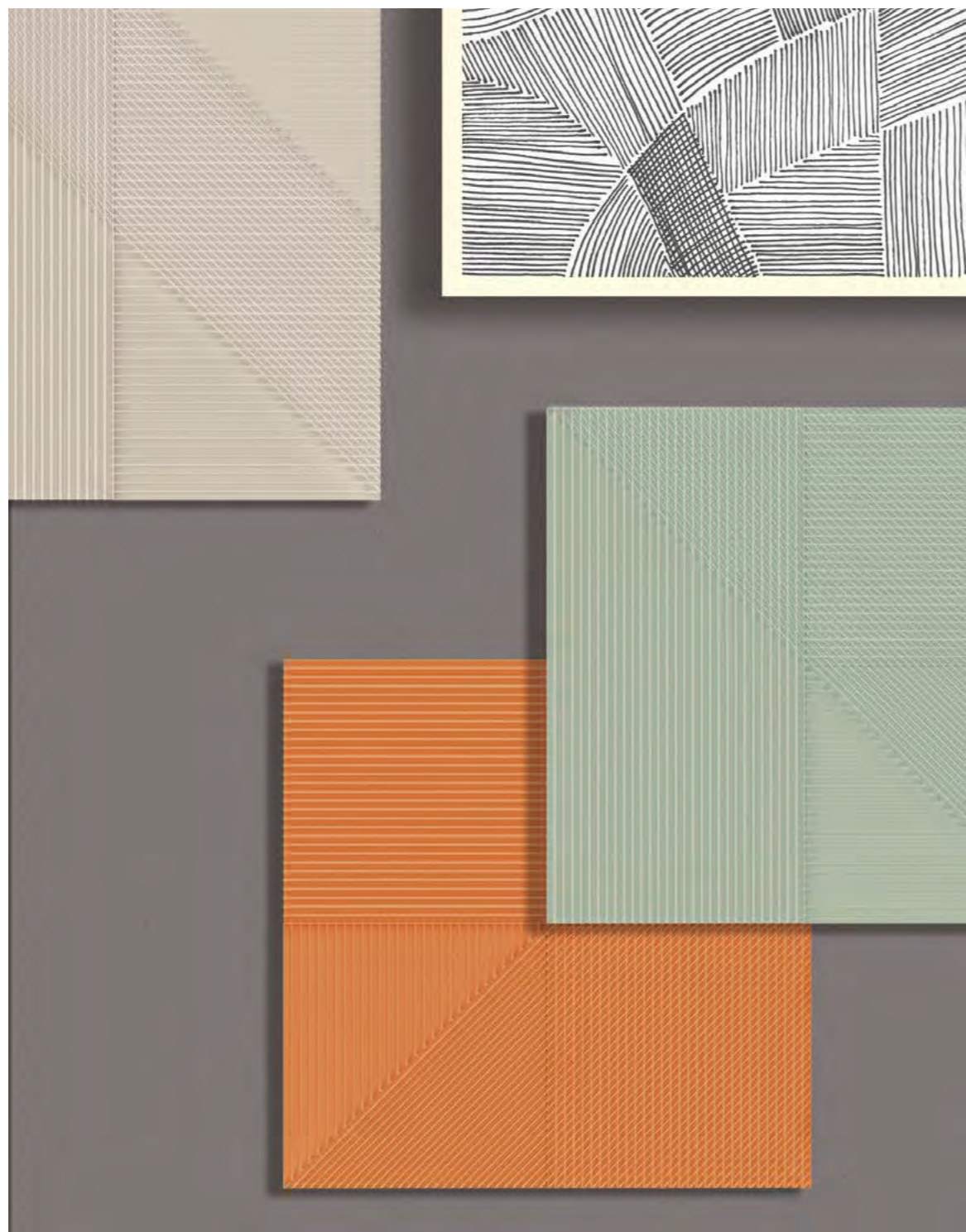
LINS GREY/20X20 · LINS WHITE/20X20



LINS MINT/20X20

white body — 20x20

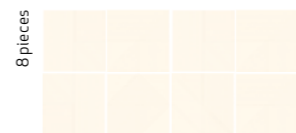
LINS BY YONOH



LINS BY YONOH



21016 LINS WHITE
Q7 (20x20 cm — 77/8x77/8")
4 patterns



21023 LINS SUNSET
Q7 (20x20 cm — 77/8x77/8")
4 patterns



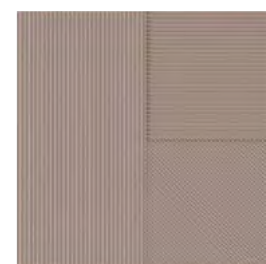
21024 LINS PUMPKIN
Q7 (20x20 cm — 77/8x77/8")
4 patterns



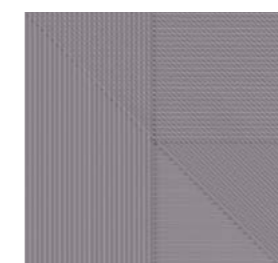
21017 LINS MOONLIGHT
Q7 (20x20 cm — 77/8x77/8")
4 patterns



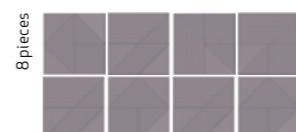
21020 LINS TAUPE
Q7 (20x20 cm — 77/8x77/8")
4 patterns



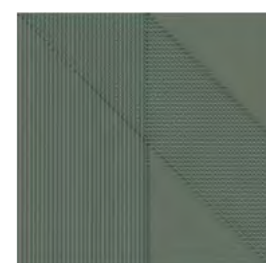
21019 LINS BROWN
Q7 (20x20 cm — 77/8x77/8")
4 patterns



21018 LINS GREY
Q7 (20x20 cm — 77/8x77/8")
4 patterns



21022 LINS MINT
Q7 (20x20 cm — 77/8x77/8")
4 patterns



21021 LINS TEAL
Q7 (20x20 cm — 77/8x77/8")
4 patterns



*Random designs in box.
Diseños aleatorios por caja.

TECHNICAL CHARACTERISTICS

	MATT	GLOSS	SHADE VARIATION	SHOWER WALL
LINS	•	•	•	•

PACKING

UNIT	PIECES	PIECES	PIECES	BOX	BOX	BOX	WEIGHT	WEIGHT	BOXES	PIALLET	PIALLET	cm	THICKNESS	THICKNESS
PIECE	m ²	m ²	m ²	kg	kg	kg	(kg)	(kg)	(m ²)	(m ²)	(m ²)	(mm)	(mm)	
LINS	25	2.32	26	1.04	11.19	14.27	31.39	72	74.66	806	120x80x98	8	0.31	