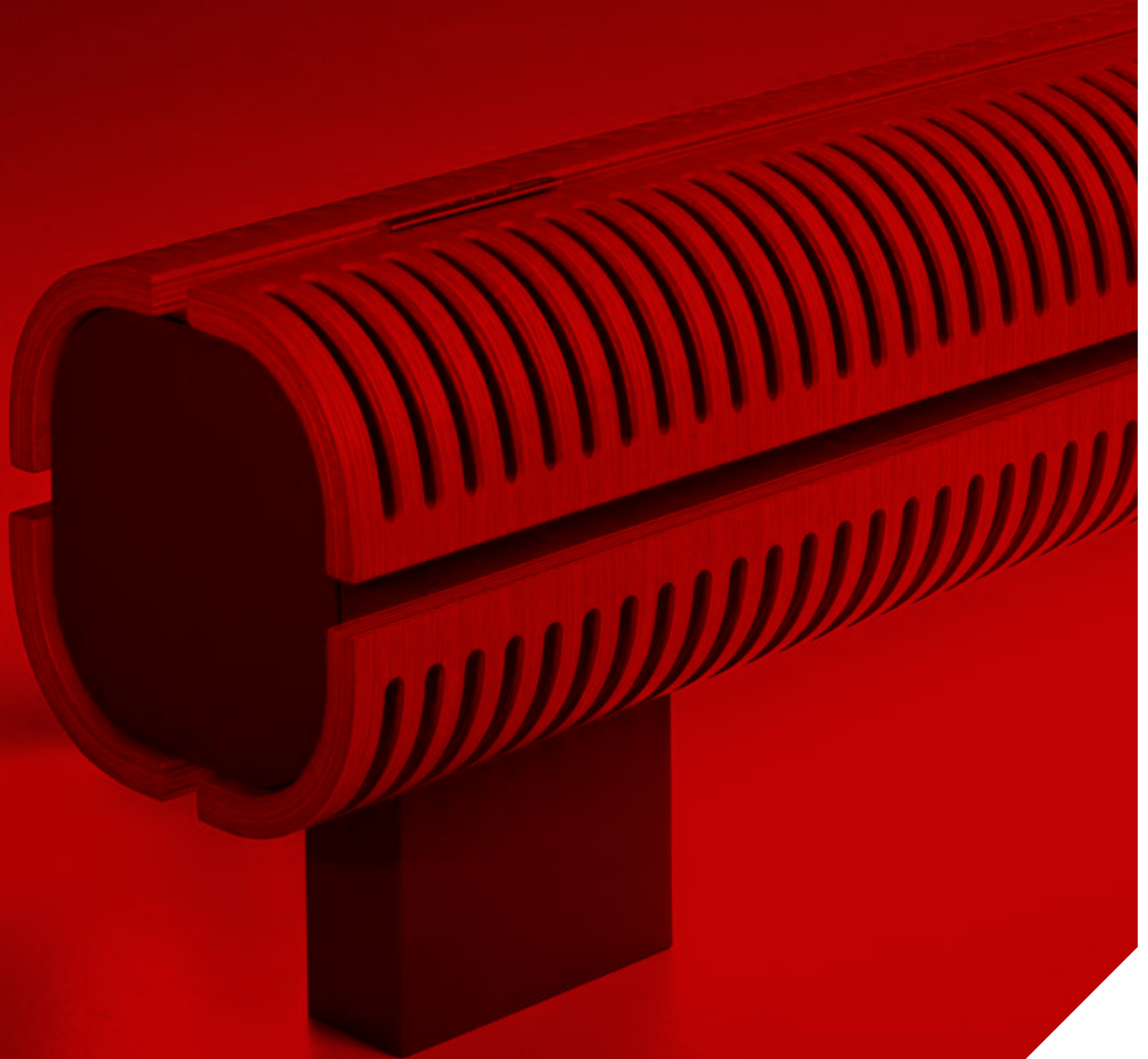


versatile

KNOCKONWOOD FREESTANDING DBE € 2024.EX



KNOCKONWOOD FREESTANDING DBE

Warm power, noble wood

- Developed for the house of the future, “Living Tomorrow”, in Vilvoorde-Belgium.
- Completely pre-assembled including DBE units, connection set and TRV head.
- Casing with curved wooden shell finished in high-grade veneer in 9 wood finishes.
- Hidden control with pre-mounted connection set and TRV head.
- Low-H₂O technology with super conductive and ultra fast heat exchanger for low energy consumption and maximum heat emission.
- DBE (Dynamic Boost Effect) for compact dimensions at super-low water temperatures from 28 °C.
- Safe surface temperature.
- **A 30 year guarantee** on the heat exchanger.

**LIVING
TOMORROW**
Where visions meet





KNOCKONWOOD FREESTANDING DBE





KNOCKONWOOD FREESTANDING DBE

KNUF. 021 LLL 15.XXX/DBE/...

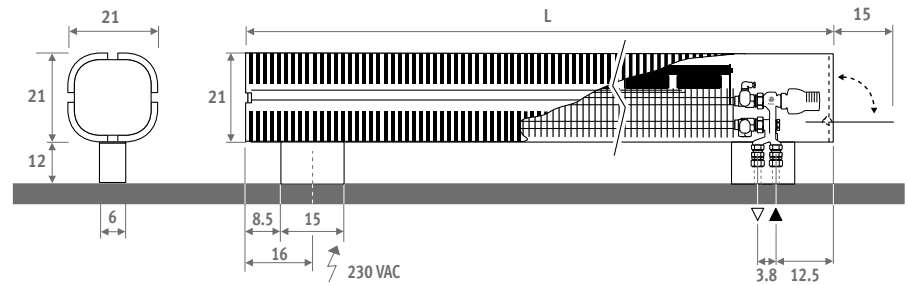
Completely pre-assembled including DBE units, connection set and TRV head

L	Type	STANDBY*		COMFORT			€	
		Watts 75/65	Watts 55/45	Watts 75/65	Watts 55/45	Watts 35/30	cat. 1	cat. 2
110	15	1178	575	1678	1001	414	On request	
130	15	1414	690	2164	1291	534		
170	15	1885	920	2885	1721	712		
210	15	2356	1150	3606	2151	889		

* Stand-by is the static output if the activators are not working. Transition from Stand-by to Comfort is effected automatically in accordance with the thermal need. Boost output see: www.jaga.com

Output at 20°C room temperature

DIMENSIONS (in cm)



ORDERING CODE

code	height	length	type	wood
KNUF .	021	110	15 . XXX	/DBE/...
			fill in type of wood	
			fill in sleeve coupling Eurocone	
			Precision metal tube 14/1	114
			Precision metal tube 15/1	115
			Precision metal tube 16/1	116
			RPE/ALU tube 16/2	316
			(other sleeve couplings: see "Connection sets and Valves Low-H ₂ O")	

STANDARD DELIVERY

Delivered in a cardboard box, which can also be used as protection on site after installation.

Standard delivery:

- pre-mounted radiator in one piece with easy to open side panel for setting temperature. Casing in plywood with veneer oak natural 700 (cat. 1), varnished in satin mat. Pre-mounted DBE set with operation, control and power supply 12 VDC included.
- Low-H₂O heat exchanger type 15
- feet and side panels in sandblast grey 001, thermostatic head hidden behind the side panel.
- Jaga-Pro valve and Jaga thermostatic head. Can be connected at either end, inside the foot.
- angled air vent 1/8" and drain plug 1/2"

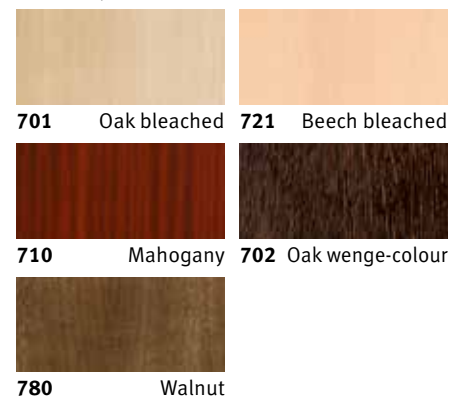
WOOD FINISHES

The wooden casing is finished with a scratch-resistant polyurethane varnish, satin mat, gloss degree 40%. High UV resistance.

Category 1



Category 2



versatile