

versatile

Sizing, installation, dimensions and weights GOLD SD

The charts and tables in this documentation are intended for use as a general survey.

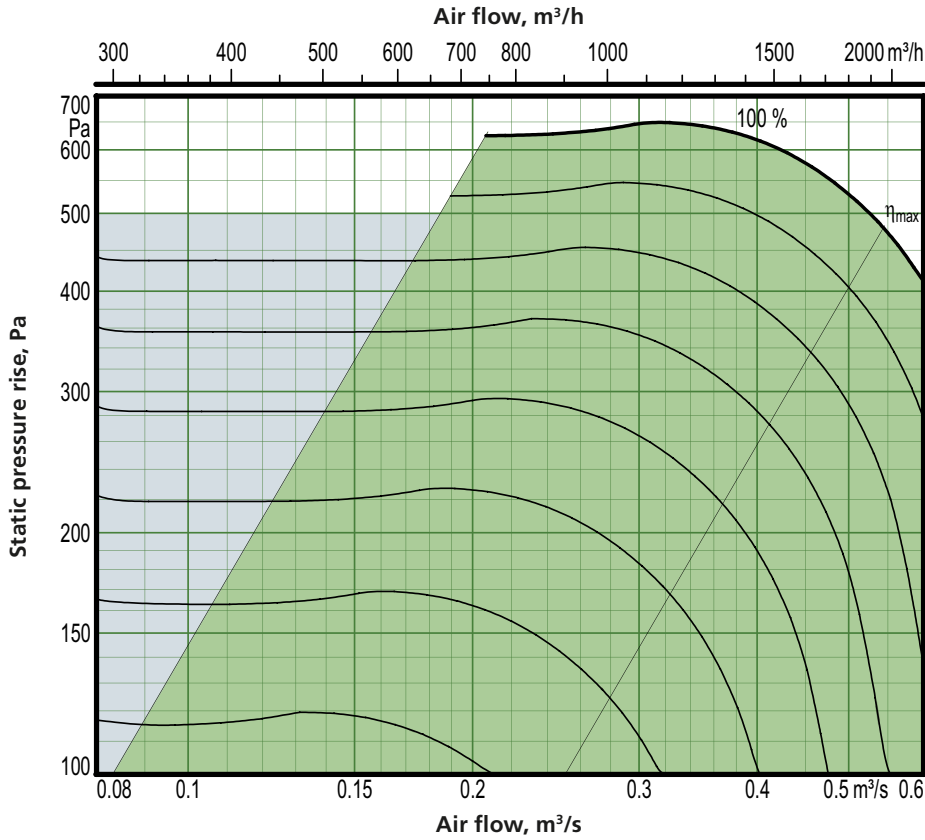
Exact sizing can be carried out in the AHU Design air handling unit selection program.

Contents

Size 004.....	124
Size 005.....	127
Size 007.....	130
Size 008.....	133
Size 011.....	136
Size 012.....	139
Size 014.....	142
Size 020.....	144
Size 025.....	146
Size 030.....	148
Size 035.....	150
Size 040.....	152
Size 050.....	154
Size 060.....	156
Size 070.....	158
Size 080.....	160
Size 100.....	162
Size 120.....	164

Sizing, installation, dimensions and weights

GOLD SD, size 004



Motor shaft power: 1.15 kW (0.41 kW)

- Recommended working range for sizing.
- If pressure regulation is used, the air flow can be regulated to zero.
- However this presupposes a certain static pressure drop in the ducting (approx. 50 Pa).

Min. and max. airflows

The flows specified refer to those that can be preset in the hand-held terminal. The practical flow limits are determined by the external pressure drop.

Size	Min. airflow (on airflow regulation)		Max. airflow	
	m³/h	m³/s	m³/h	m³/s
004	290	0.08	2160	0.60

Exact sizing can be carried out in the AHU Design air handling unit selection program

Sizing, installation, dimensions and weights

GOLD SD, size 004, common casing

Delivery and transport within the site

The GOLD SD can be used as a supply air or an extract air handling unit. If both supply air and extract air handling units are used in a ventilation system, the supply air unit is equipped with a control unit, but not the extract air unit. A communication cable is used to connect both air handling units to one another making it possible to control both units.

Filter holders for pleated filters are in the fan section. Set of filters with pleated medium, pressure sensor, hoses and communication cable are optional extras.

Fan

Placement options, see the illustration to the right. Horizontal GOLD units can be installed outdoors if they are equipped with the roof, air intake section and exhaust air hood accessories.

Fan + coil heat exchanger

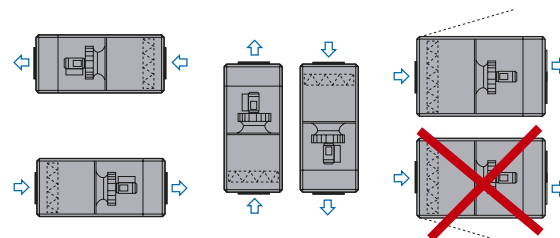
The air handling unit can be supplied as one single unit or divided into a fan section and coil heat exchanger.

The unit sections are jointed together/split by means of bolts. The electrical and control cables between the unit sections have quick-fit connectors.

Duct connection options

A: Specify right-hand or left-hand version when ordering, see the illustration to the right.

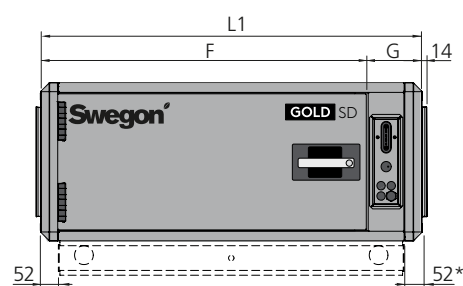
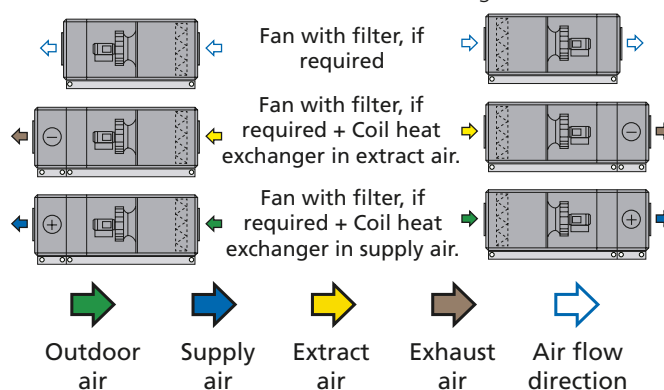
Fan



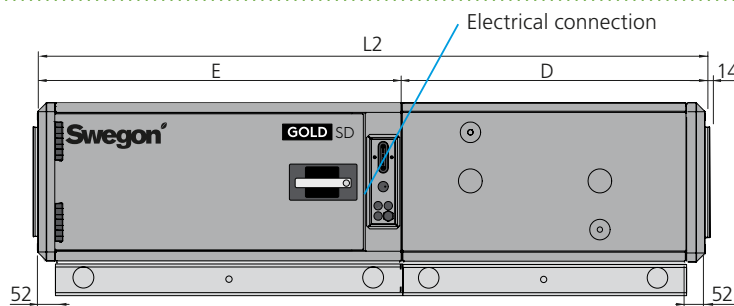
Fan + coil heat exchanger

Left-hand version

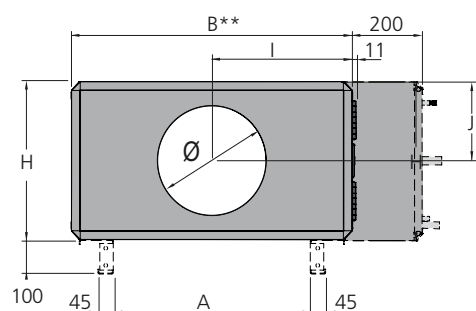
Right-hand version



Fan



Fan + coil heat exchanger



Base beams are optional for air handling units without coil heat exchangers. Base beams are standard on air handling units with coil heat exchangers.

* The air handling unit is supplied without end connection panel if a duct accessory housed in an insulated casing will be connected. The AHU can also be supplied with full face end connection panel (accessory).

** Width of coil heat exchanger (if required) = B + 200 mm.

Size	Weight, kg fan+filter	Weight, kg fan + filter + coil
004	97-118	210-236

Size	L1	L2	B	H	A	D	E	F	G	I	J	Ø
004	1120	1955	825	460	579	887	1068	956	164	412.5	230	315

Clear space for inspection

A clear space of 900 mm should be provided in front of the unit.

Electrical connection

1-phase, 3-wire, 230 V -10/+15%, 50 Hz, 10 A

Rated data per fan

Motor shaft power 1.15 kW (0.41 kW)*,

Motor control system: 1 x 230 V, 50 Hz

*The motor control system limits the output power to the value specified.

Sizing, installation, dimensions and weights

GOLD SD, size 004, split version

Delivery and transport within the site

The GOLD SD units are available in right-hand or left-hand version, as a fan section only, as a fan section and filter section or as a fan section, filter section and coil heat exchanger section.

The air handling unit can be supplied as one single unit or in an optional division of sections.

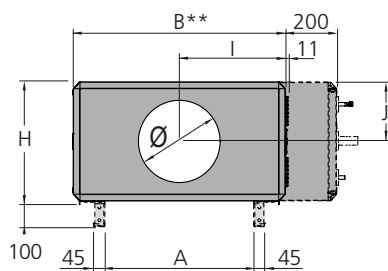
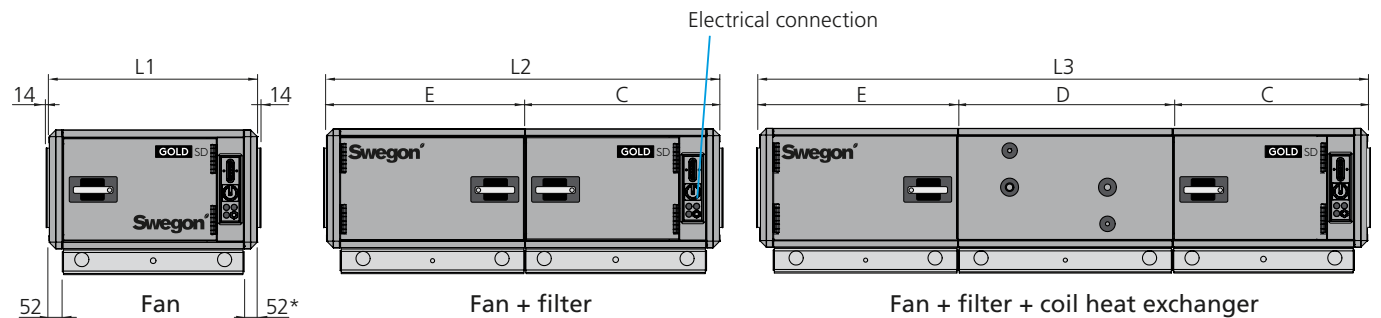
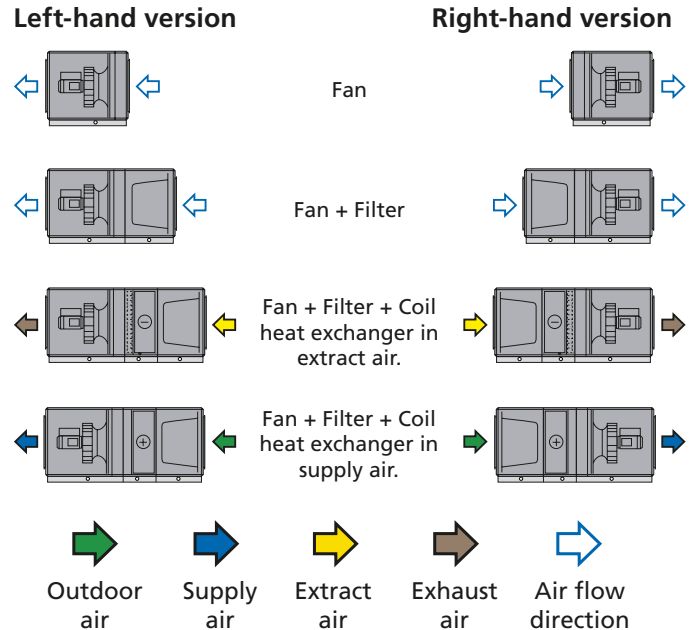
The unit sections are jointed together/split by means of bolts. The electrical and control cables between the unit sections have quick-fit connectors.

The GOLD SD can be used as a supply air or an extract air handling unit. If both supply air and extract air handling units are used in a ventilation system, the supply air unit is equipped with a control unit, but not the extract air unit. A communication cable is used to connect both air handling units to one another making it possible to control both units.

The air handling unit/unit sections is/are delivered on wooden beams.

Duct connection options

A: Specify right-hand or left-hand version when ordering.



* The air handling unit is supplied without end connection panel if a duct accessory housed in an insulated casing will be connected. The AHU can also be supplied with full face end connection panel (accessory).

** Width of coil heat exchanger (if required) = B + 200 mm.

Size	Weight, kg fan	Weight, kg fan+filter	Weight, kg fan + filter + coil
004	68-85	119-140	232-258

Size	L1	L2	L3	B	H	A	C	D	E	I	J	Ø
004	809	1529	2364	825	460	579	757	835	772	412	230	315

Clear space for inspection

A clear space of 900 mm should be provided in front of the unit.

Electrical connection

1-phase, 3-wire, 230 V -10/+15%, 50 Hz, 10 A

Rated data per fan

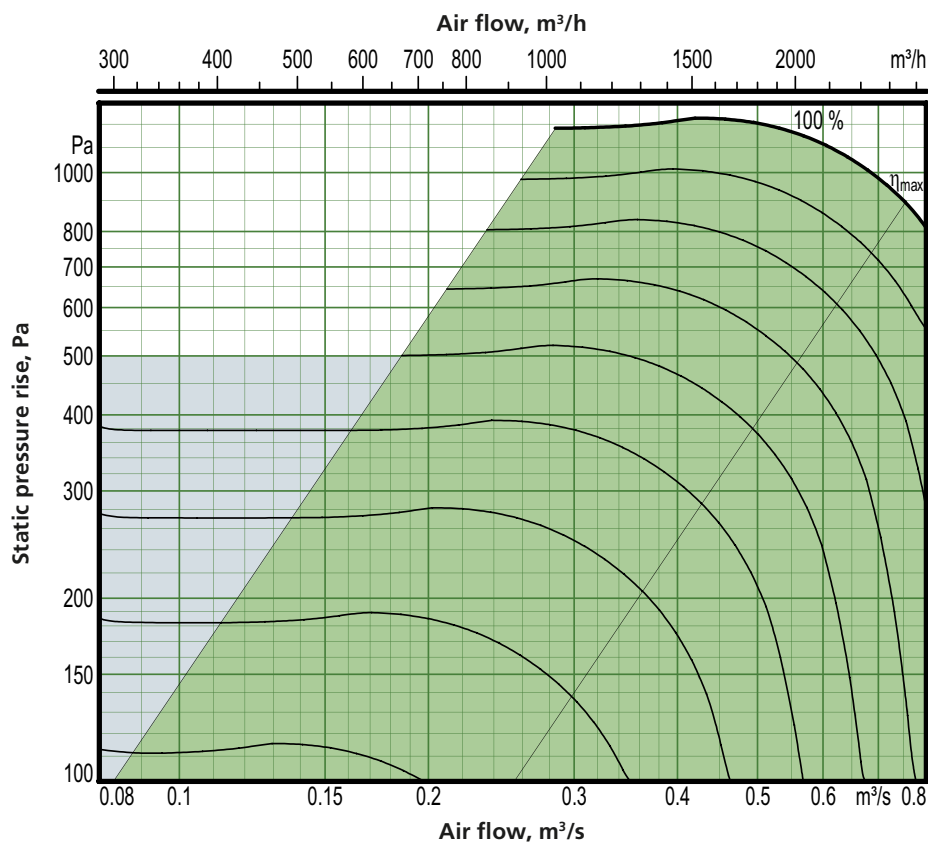
Motor shaft power 1.15 kW (0.41 kW)*,

Motor control system: 1 x 230 V, 50 Hz

*The motor control system limits the output power to the value specified.

Sizing, installation, dimensions and weights

GOLD SD, size 005



Motor shaft power: 1.15 kW (capacity variant 2)

- Recommended working range for sizing.
- If pressure regulation is used, the air flow can be regulated to zero.
- However this presupposes a certain static pressure drop in the ducting (approx. 50 Pa).

Min. and max. air flows

The flows specified refer to those that can be preset in the hand-held terminal. The practical flow limits are determined by the external pressure drop.

Size	Min. airflow (on airflow regulation)		Max. airflow	
	m ³ /h	m ³ /s	m ³ /h	m ³ /s
005	290	0.08	2880	0.80

Exact sizing can be carried out in the AHU Design air handling unit selection program

Sizing, installation, dimensions and weights

GOLD SD, size 005, common casing

Delivery and transport within the site

The GOLD SD can be used as a supply air or an extract air handling unit. If both supply air and extract air handling units are used in a ventilation system, the supply air unit is equipped with a control unit, but not the extract air unit. A communication cable is used to connect both air handling units to one another making it possible to control both units.

Filter holders for pleated filters are in the fan section. Set of filters with pleated medium, pressure sensor, hoses and communication cable are optional extras.

Fan

Placement options, see the illustration to the right. Horizontal GOLD units can be installed outdoors if they are equipped with the roof, air intake section and exhaust air hood accessories.

Fan + coil heat exchanger

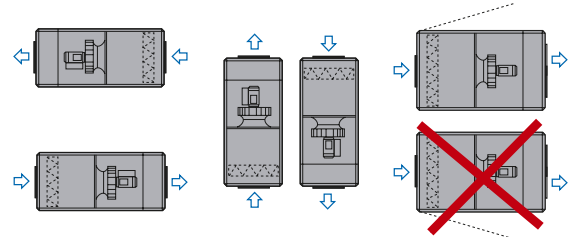
The air handling unit can be supplied as one single unit or divided into a fan section and coil heat exchanger.

The unit sections are jointed together/split by means of bolts. The electrical and control cables between the unit sections have quick-fit connectors.

Duct connection options

A: Specify right-hand or left-hand version when ordering, see the illustration to the right.

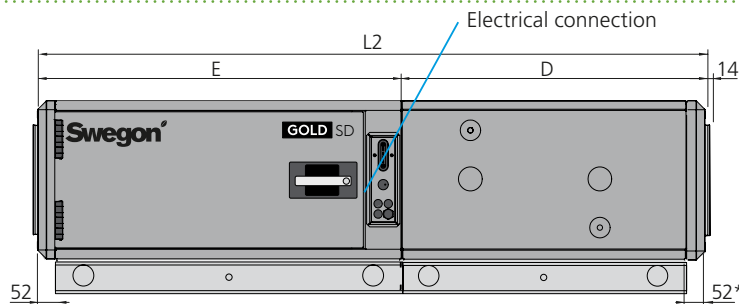
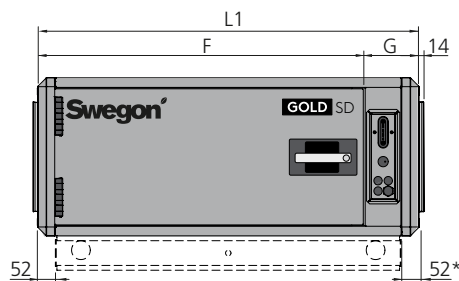
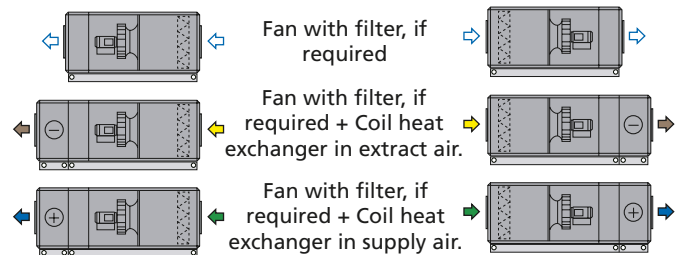
Fan



Fan + coil heat exchanger

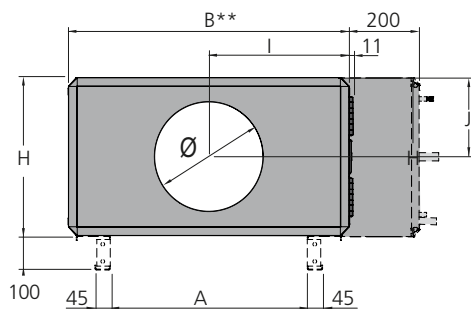
Left-hand version

Right-hand version



Fan

Fan + coil heat exchanger



Base beams are optional for air handling units without coil heat exchangers.

Base beams are standard on air handling units with coil heat exchangers.

* The air handling unit is supplied without end connection panel if a duct accessory housed in an insulated casing will be connected. The AHU can also be supplied with full face end connection panel (accessory).

** Width of coil heat exchanger (if required) = B + 200 mm.

Size	Weight, kg fan+filter	Weight, kg fan + filter + coil
005	97-118	210-236

Size	L1	L2	B	H	A	D	E	F	G	I	J	Ø
005	1120	1955	825	460	579	887	1068	956	164	412.5	230	315

Clear space for inspection

A clear space of 900 mm should be provided in front of the unit.

Electrical connection

1-phase, 3-wire, 230 V -10/+15%, 50 Hz, 10 A

Rated data per fan

Motor shaft power: 1.15 kW (0.8 kW* or 1.15 kW),
motor control system: 1 x 230 V, 50 Hz

*The motor control system limits the output power to the value specified.

Sizing, installation, dimensions and weights

GOLD SD, size 005, split version

Delivery and transport within the site

The GOLD SD units are available in right-hand or left-hand version, as a fan section only, as a fan section and filter section or as a fan section, filter section and coil heat exchanger section.

The air handling unit can be supplied as one single unit or in an optional division of sections.

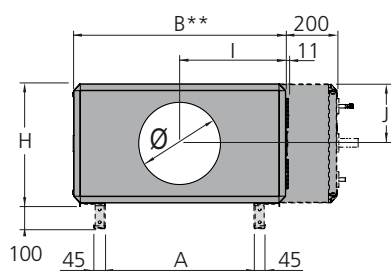
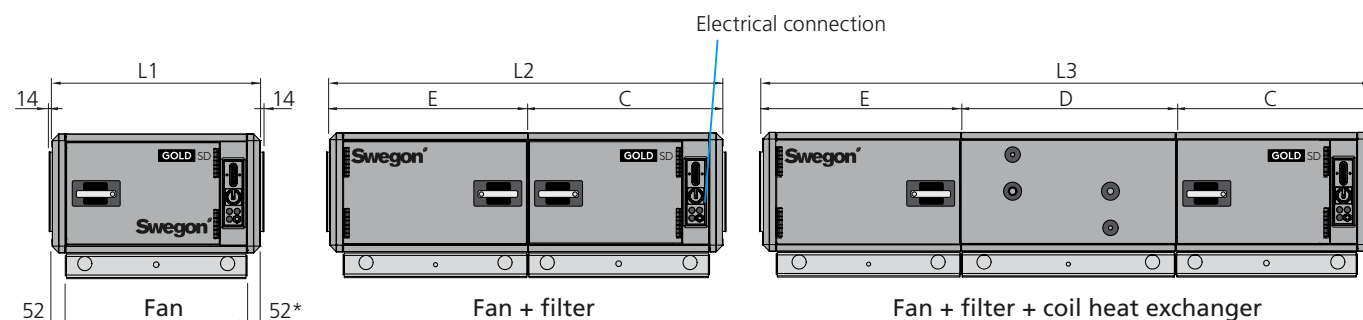
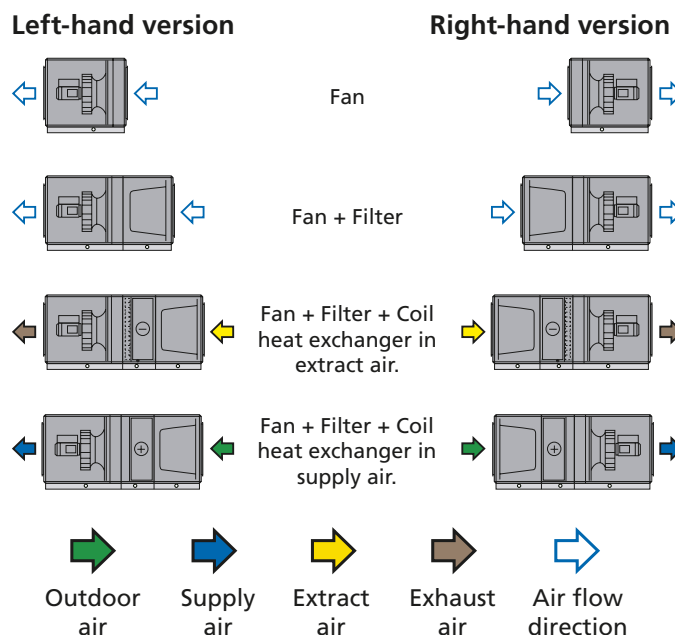
The unit sections are jointed together/split by means of bolts. The electrical and control cables between the unit sections have quick-fit connectors.

The GOLD SD can be used as a supply air or an extract air handling unit. If both supply air and extract air handling units are used in a ventilation system, the supply air unit is equipped with a control unit, but not the extract air unit. A communication cable is used to connect both air handling units to one another making it possible to control both units.

The air handling unit/unit sections is/are delivered on wooden beams.

Duct connection options

A: Specify right-hand or left-hand version when ordering.



* The air handling unit is supplied without end connection panel if a duct accessory housed in an insulated casing will be connected. The AHU can also be supplied with full face end connection panel (accessory).

** Width of coil heat exchanger (if required) = B + 200 mm.

Size	Weight, kg fan	Weight, kg fan+filter	Weight, kg fan + filter + coil
005	68-85	119-140	232-258

Size	L1	L2	L3	B	H	A	C	D	E	I	J	Ø
005	809	1529	2364	825	460	579	757	835	772	412	230	315

Clear space for inspection

A clear space of 900 mm should be provided in front of the unit.

Electrical connection

1-phase, 3-wire, 230 V -10/+15%, 50 Hz, 10 A

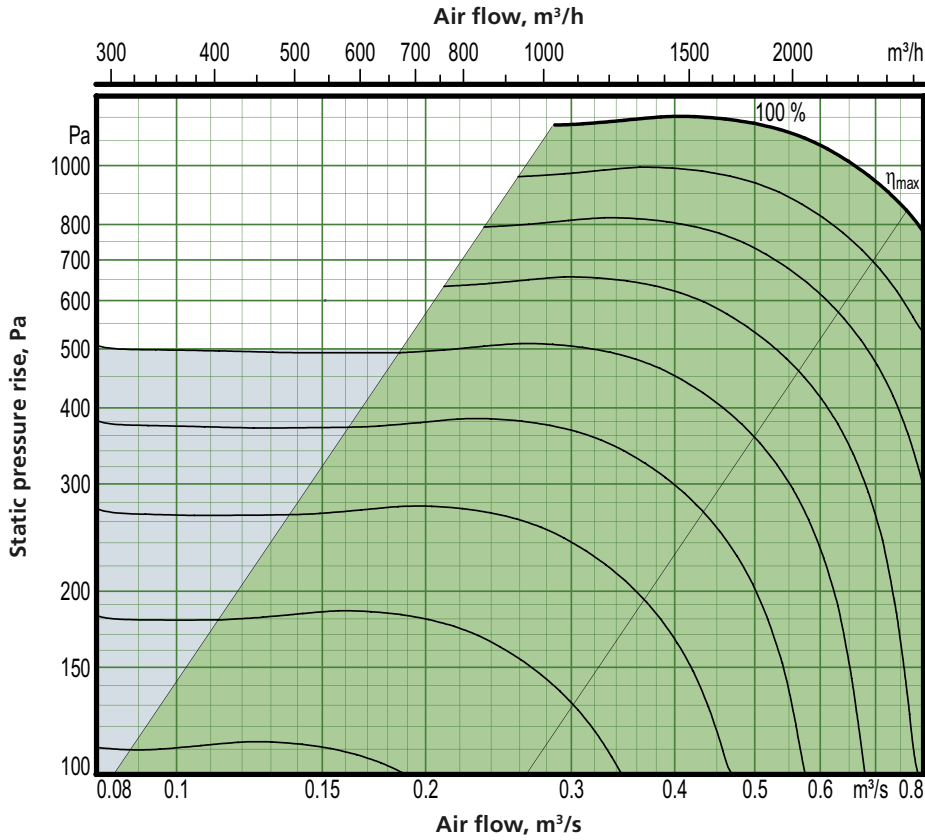
Rated data per fan

Motor shaft power: 1.15 kW (0.8 kW* or 1.15 kW), motor control system: 1 x 230 V, 50 Hz

*The motor control system limits the output power to the value specified.

Sizing, installation, dimensions and weights

GOLD SD, size 007



Motor shaft power: 1.15 kW (capacity variant 2)

- Recommended working range for sizing.
- If pressure regulation is used, the air flow can be regulated to zero.
- However this presupposes a certain static pressure drop in the ducting (approx. 50 Pa).

Min. and max. air flows

The flows specified refer to those that can be preset in the hand-held terminal. The practical flow limits are determined by the external pressure drop.

Size	Min. airflow (on airflow regulation)		Max. airflow	
	m³/h	m³/s	m³/h	m³/s
007	290	0.08	2880	0.8

Exact sizing can be carried out in the AHU Design air handling unit selection program

Sizing, installation, dimensions and weights

GOLD SD, size 007, common casing

Delivery and transport within the site

The GOLD SD can be used as a supply air or an extract air handling unit. If both supply air and extract air handling units are used in a ventilation system, the supply air unit is equipped with a control unit, but not the extract air unit. A communication cable is used to connect both air handling units to one another making it possible to control both units.

Filter holders for pleated filters are in the fan section. Set of filters with pleated medium, pressure sensor, hoses and communication cable are optional extras.

Fan

Placement options, see the illustration to the right. Horizontal GOLD units can be installed outdoors if they are equipped with the roof, air intake section and exhaust air hood accessories.

Fan + coil heat exchanger

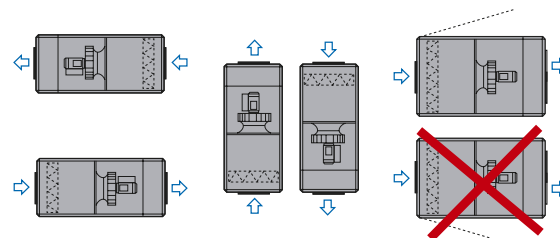
The air handling unit can be supplied as one single unit or divided into a fan section and coil heat exchanger.

The unit sections are jointed together/split by means of bolts. The electrical and control cables between the unit sections have quick-fit connectors.

Duct connection options

A: Specify right-hand or left-hand version when ordering, see the illustration to the right.

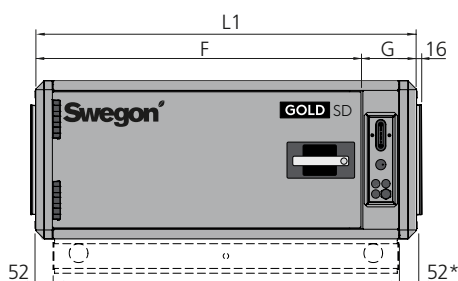
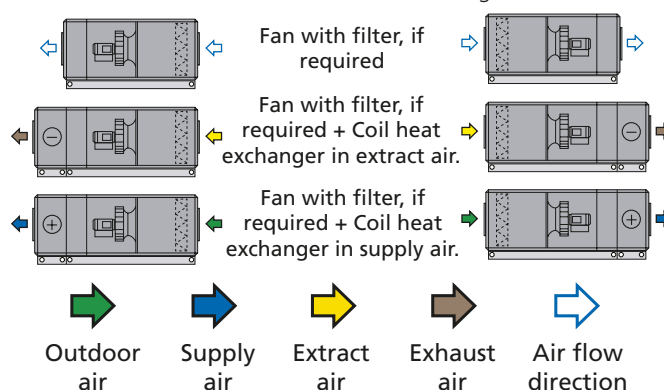
Fan



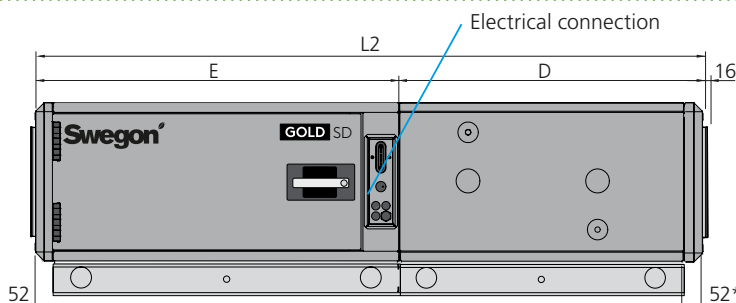
Fan + coil heat exchanger

Left-hand version

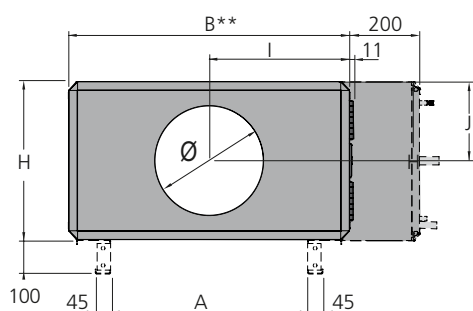
Right-hand version



Fan



Fan + coil heat exchanger



Base beams are optional for air handling units without coil heat exchangers.

Base beams are standard on air handling units with coil heat exchangers.

* The air handling unit is supplied without end connection panel if a duct accessory housed in an insulated casing will be connected. The AHU can also be supplied with full face end connection panel (accessory).

** Width of coil heat exchanger (if required) = B + 200 mm.

Size	Weight, kg fan+filter	Weight, kg fan + filter + coil
007	115-145	255-291

Size	L1	L2	B	H	A	D	E	F	G	I	J	Ø
007	1214	2049	995	542.5	749	887	1162	1050	164	497.5	271	400

Clear space for inspection

A clear space of 1,000 mm should be provided in front of the unit.

Electrical connection

1-phase, 3-wire, 230 V -10/+15%, 50 Hz, 10 A

Rated data per fan

Motor shaft power: 1.15 kW (0.8 kW* or 1.15 kW),
motor control system: 1 x 230 V, 50 Hz

*The motor control system limits the output power to the value specified.

Sizing, installation, dimensions and weights

GOLD SD, size 007, split version

Delivery and transport within the site

The GOLD SD units are available in right-hand or left-hand version, as a fan section only, as a fan section and filter section or as a fan section, filter section and coil heat exchanger section.

The air handling unit can be supplied as one single unit or in an optional division of sections.

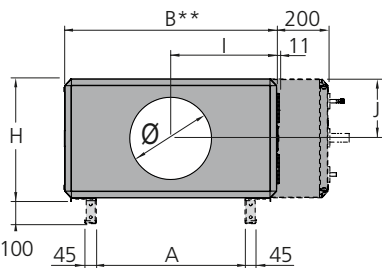
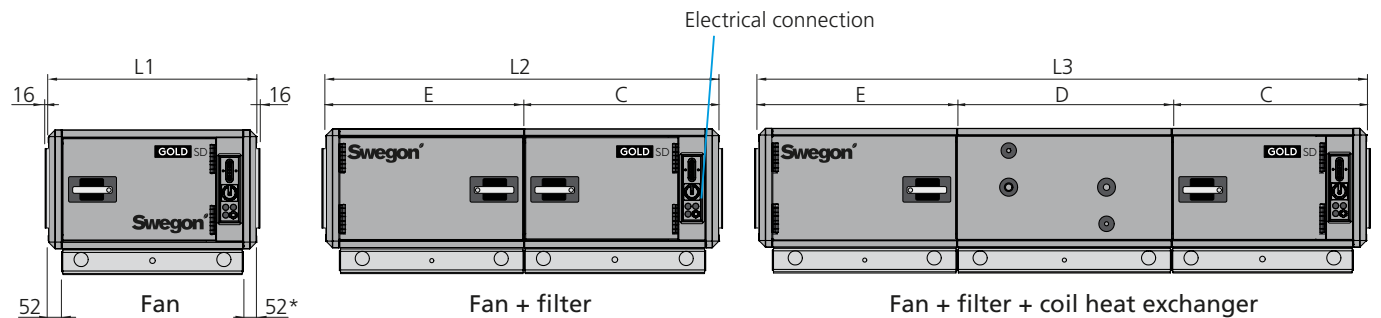
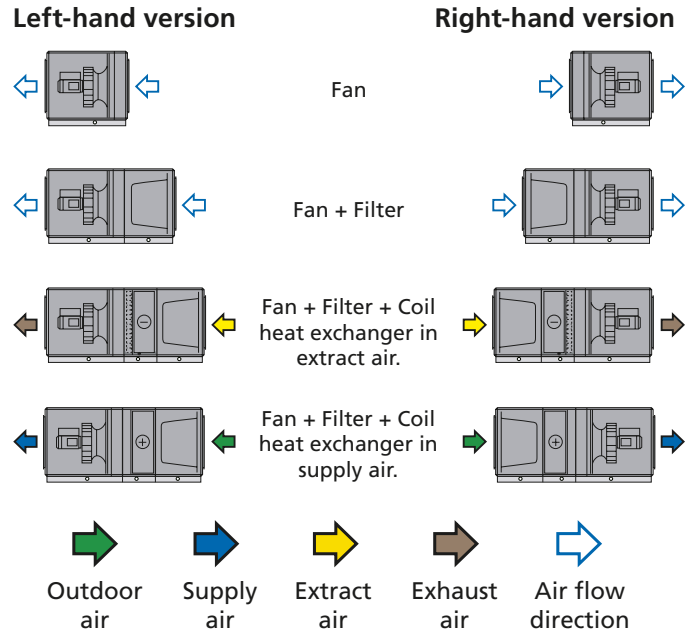
The unit sections are jointed together/split by means of bolts. The electrical and control cables between the unit sections have quick-fit connectors.

The GOLD SD can be used as a supply air or an extract air handling unit. If both supply air and extract air handling units are used in a ventilation system, the supply air unit is equipped with a control unit, but not the extract air unit. A communication cable is used to connect both air handling units to one another making it possible to control both units.

The air handling unit/unit sections is/are delivered on wooden beams.

Duct connection options

A: Specify right-hand or left-hand version when ordering.



* The air handling unit is supplied without end connection panel if a duct accessory housed in an insulated casing will be connected. The AHU can also be supplied with full face end connection panel (accessory).
 ** Width of coil heat exchanger (if required) = B + 200 mm.

Size	Weight, kg fan	Weight, kg fan+filter	Weight, kg fan + filter + coil
007	79-100	138-164	278-310

Size	L1	L2	L3	B	H	A	C	D	E	I	J	Ø
007	809	1529	2364	995	542.5	749	757	835	772	497.5	271	400

Clear space for inspection

A clear space of 1,000 mm should be provided in front of the unit.

Electrical connection

1-phase, 3-wire, 230 V -10/+15%, 50 Hz, 10 A

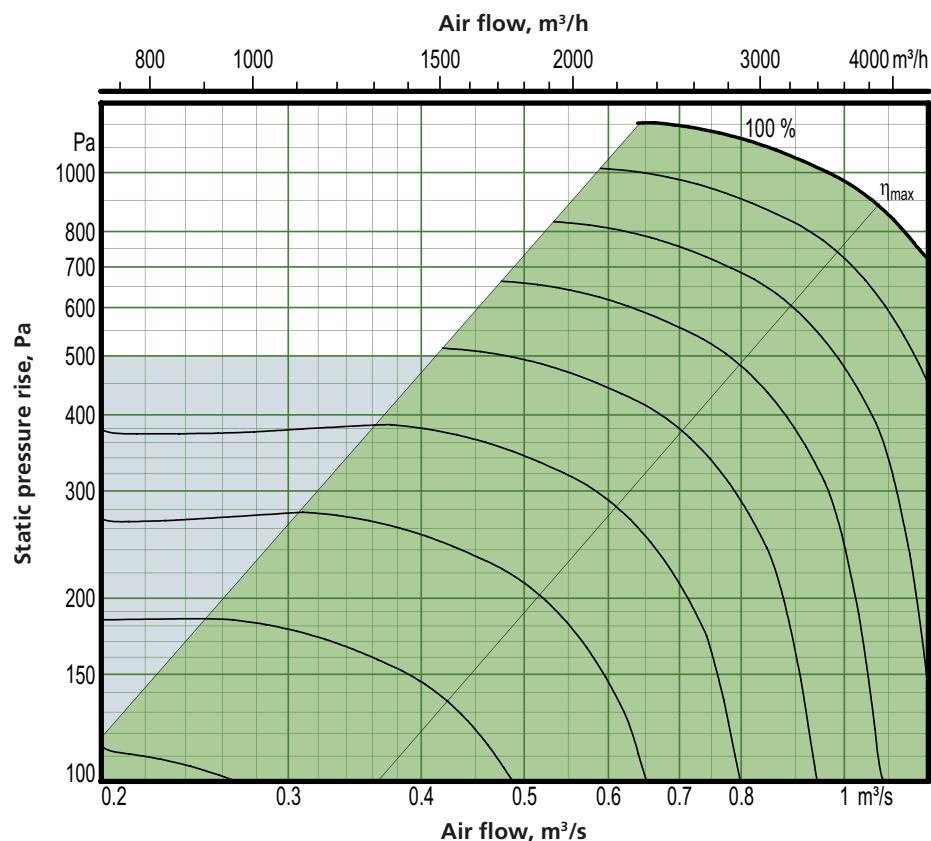
Rated data per fan

Motor shaft power: 1.15 kW (0.8 kW* or 1.15 kW), motor control system: 1 x 230 V, 50 Hz

*The motor control system limits the output power to the value specified.

Sizing, installation, dimensions and weights

GOLD SD, size 008



Motor shaft power: 1.6 kW (capacity variant 2)

- Recommended working range for sizing.
- If pressure regulation is used, the air flow can be regulated to zero.
- However this presupposes a certain static pressure drop in the ducting (approx. 50 Pa).

Min. and max. air flows

The flows specified refer to those that can be preset in the hand-held terminal. The practical flow limits are determined by the external pressure drop.

Size	Min. airflow (on airflow regulation)		Max. airflow	
	m ³ /h	m ³ /s	m ³ /h	m ³ /s
008	720	0,20	4320	1.20

Exact sizing can be carried out in the AHU Design air handling unit selection program

Sizing, installation, dimensions and weights

GOLD SD, size 008, common casing

Delivery and transport within the site

The GOLD SD can be used as a supply air or an extract air handling unit. If both supply air and extract air handling units are used in a ventilation system, the supply air unit is equipped with a control unit, but not the extract air unit. A communication cable is used to connect both air handling units to one another making it possible to control both units.

Filter holders for pleated filters are in the fan section. Set of filters with pleated medium, pressure sensor, hoses and communication cable are optional extras.

Fan

Placement options, see the illustration to the right. Horizontal GOLD units can be installed outdoors if they are equipped with the roof, air intake section and exhaust air hood accessories.

Fan + coil heat exchanger

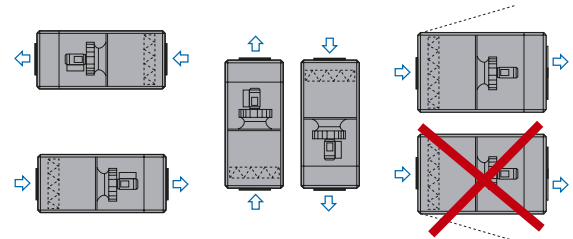
The air handling unit can be supplied as one single unit or divided into a fan section and coil heat exchanger.

The unit sections are jointed together/split by means of bolts. The electrical and control cables between the unit sections have quick-fit connectors.

Duct connection options

A: Specify right-hand or left-hand version when ordering, see the illustration to the right.

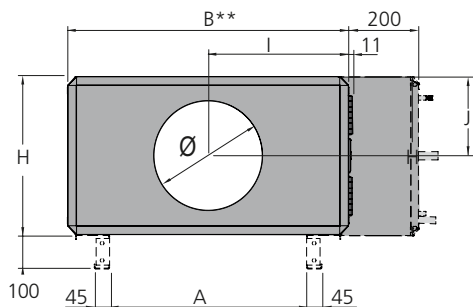
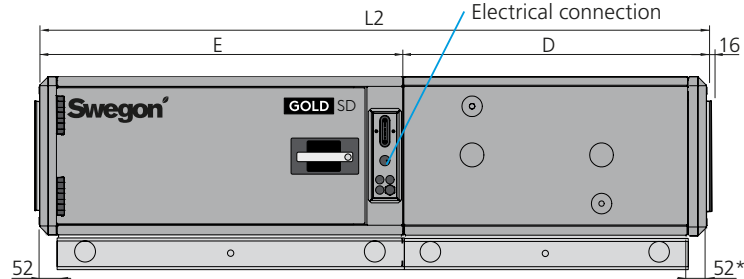
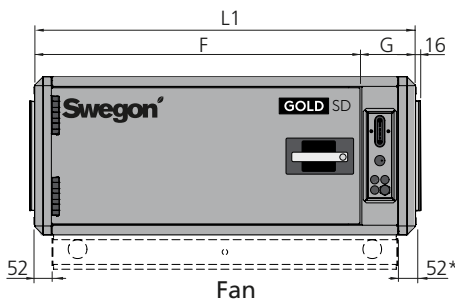
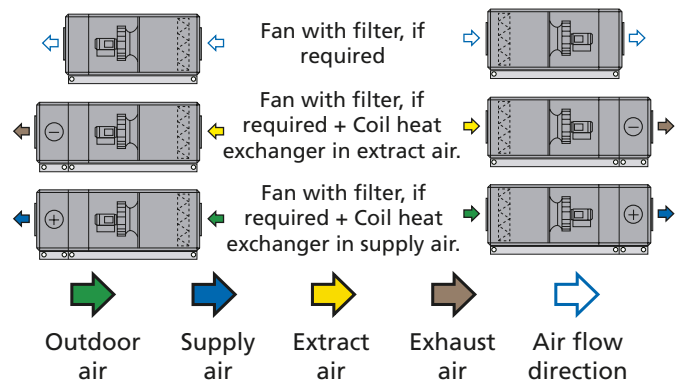
Fan



Fan + coil heat exchanger

Left-hand version

Right-hand version



Fan + coil heat exchanger

Base beams are optional for air handling units without coil heat exchangers.

Base beams are standard on air handling units with coil heat exchangers.

* The air handling unit is supplied without end connection panel if a duct accessory housed in an insulated casing will be connected. The AHU can also be supplied with full face end connection panel (accessory).

** Width of coil heat exchanger (if required) = B + 200 mm.

Size	Weight, kg fan+filter	Weight, kg fan + filter + coil
008	122-149	262-295

Size	L1	L2	B	H	A	D	E	F	G	I	J	Ø
008	1214	2049	995	542.5	749	887	1162	1050	164	497.5	271	400

Clear space for inspection

A clear space of 1,000 mm should be provided in front of the unit.

Electrical connection

Capacity variant 1:

1-phase, 3-wire, 230 V -10/+15%, 50 Hz, 10 A

Capacity variant 2:

3-phase, 5-wire, 400 V -10/+15%, 50 Hz, 10 A

Rated data per fan

Capacity variant 1:

Motor shaft power: 1.15 kW,
motor control system: 1 x 230 V, 50 Hz

Capacity variant 2:

Motor shaft power: 1.6 kW,
motor control system: 3 x 400 V, 50 Hz

Sizing, installation, dimensions and weights

GOLD SD, size 008, split version

Delivery and transport within the site

The GOLD SD units are available in right-hand or left-hand version, as a fan section only, as a fan section and filter section or as a fan section, filter section and coil heat exchanger section.

The air handling unit can be supplied as one single unit or in an optional division of sections.

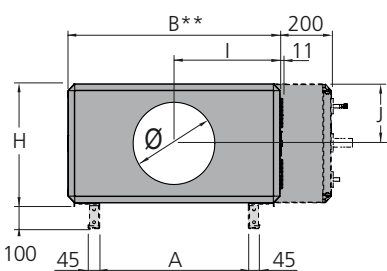
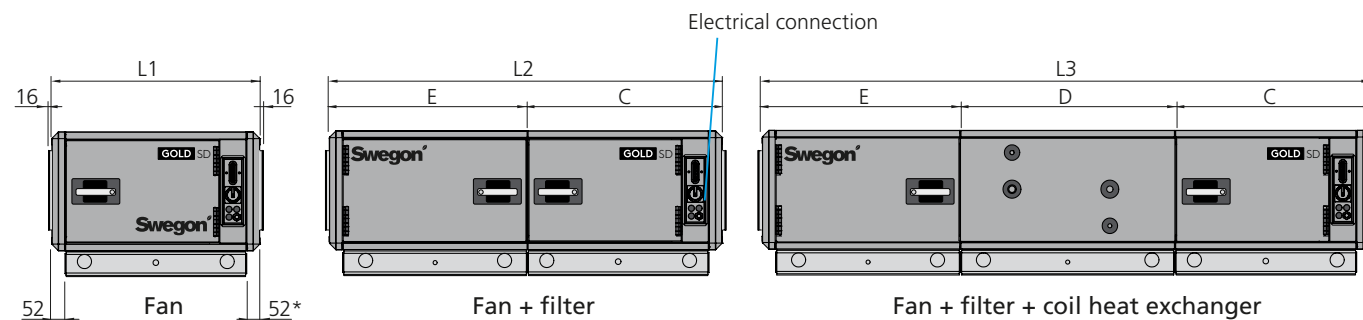
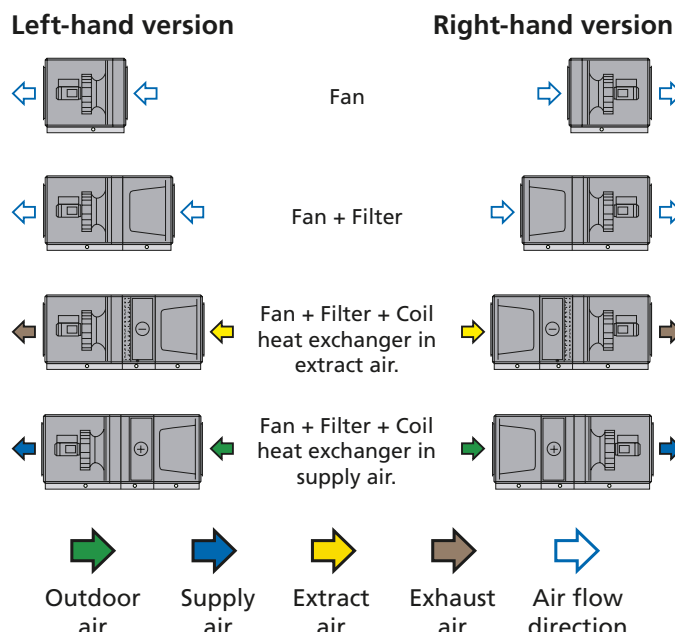
The unit sections are jointed together/split by means of bolts. The electrical and control cables between the unit sections have quick-fit connectors.

The GOLD SD can be used as a supply air or an extract air handling unit. If both supply air and extract air handling units are used in a ventilation system, the supply air unit is equipped with a control unit, but not the extract air unit. A communication cable is used to connect both air handling units to one another making it possible to control both units.

The air handling unit/unit sections is/are delivered on wooden beams.

Duct connection options

A: Specify right-hand or left-hand version when ordering.



* The air handling unit is supplied without end connection panel if a duct accessory housed in an insulated casing will be connected. The AHU can also be supplied with full face end connection panel (accessory).

** Width of coil heat exchanger (if required) = B + 200 mm.

Size	Weight, kg fan	Weight, kg fan+filter	Weight, kg fan + filter + coil
008	86-107	145-171	285-317

Size	L1	L2	L3	B	H	A	C	D	E	I	J	Ø
008	809	1529	2364	995	542.5	749	757	835	772	497.5	271	400

Clear space for inspection

A clear space of 1,000 mm should be provided in front of the unit.

Electrical connection

Capacity variant 1:

1-phase, 3-wire, 230 V -10/+15%, 50 Hz, 10 A

Capacity variant 2:

3-phase, 5-wire, 400 V -10/+15%, 50 Hz, 10 A

Rated data per fan

Capacity variant 1:

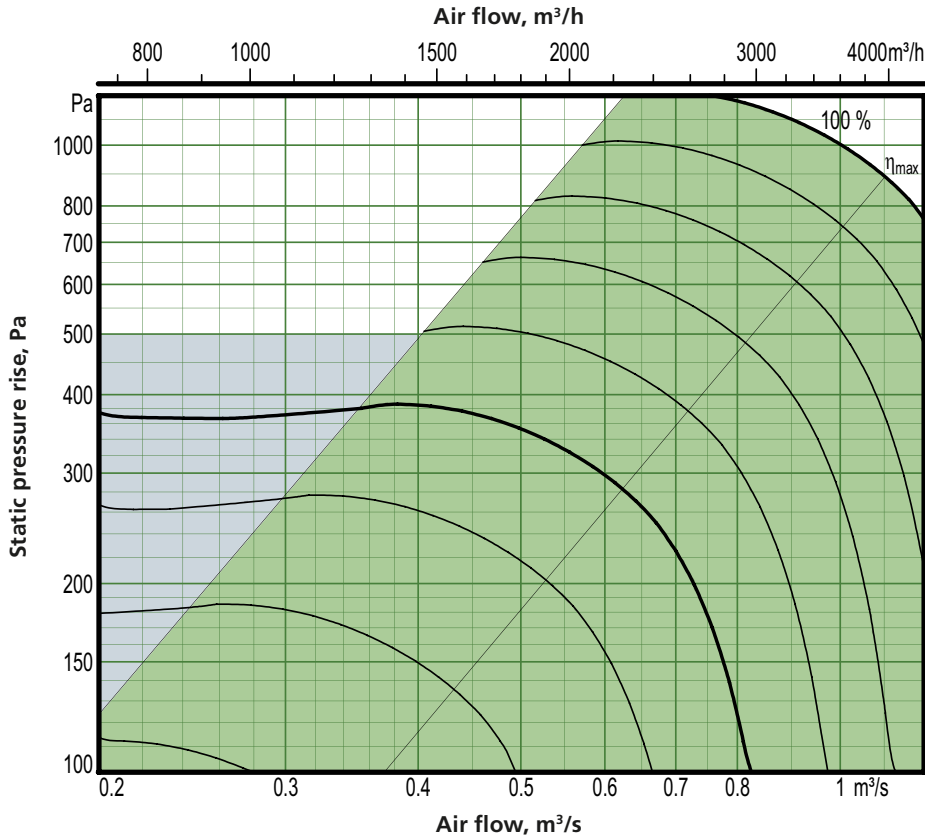
Motor shaft power: 1.15 kW,
motor control system: 1 x 230 V, 50 Hz

Capacity variant 2:

Motor shaft power: 1.6 kW,
motor control system: 3 x 400 V, 50 Hz

Sizing, installation, dimensions and weights

GOLD SD, size 011



Motor shaft power: 1.6 kW (capacity variant 2)

- Recommended working range for sizing.
- If pressure regulation is used, the air flow can be regulated to zero.
- However this presupposes a certain static pressure drop in the ducting (approx. 50 Pa).

Min. and max. air flows

The flows specified refer to those that can be preset in the hand-held terminal. The practical flow limits are determined by the external pressure drop.

Size	Min. airflow (on airflow regulation)		Max. airflow	
	m³/h	m³/s	m³/h	m³/s
011	720	0.20	4320	1.20

Exact sizing can be carried out in the AHU Design air handling unit selection program

Sizing, installation, dimensions and weights

GOLD SD, size 011, common casing

Delivery and transport within the site

The GOLD SD 011 units are available in right-hand or left-hand version, as a fan section only or as a fan section and coil heat exchanger section.

The air handling unit can be supplied as one single unit or divided into a fan section and coil heat exchanger section.

The unit sections are jointed together/split by means of bolts. The electrical and control cables between the unit sections have quick-fit connectors.

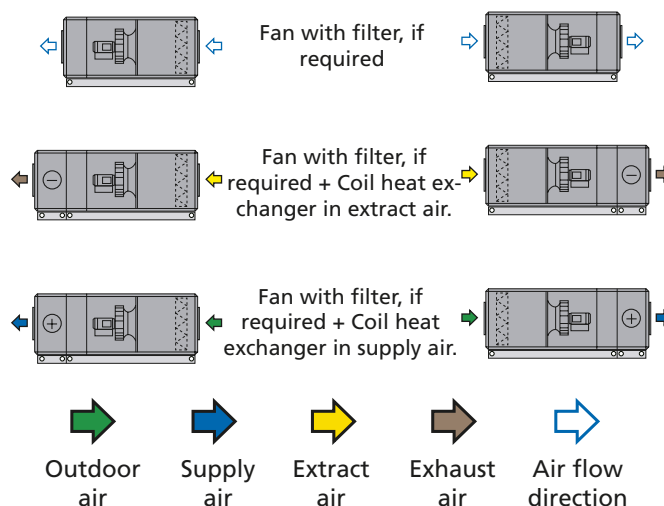
The GOLD SD can be used as a supply air or an extract air handling unit. If both supply air and extract air handling units are used in a ventilation system, the supply air unit is equipped with a control unit, but not the extract air unit. A communication cable is used to connect both air handling units to one another making it possible to control both units.

Filter holders for pleated filters are provided inside the fan section. Set of filters with pleated medium, pressure sensor, hoses and communication cable are optional extras.

The air handling unit/unit sections is/are delivered on wooden beams.

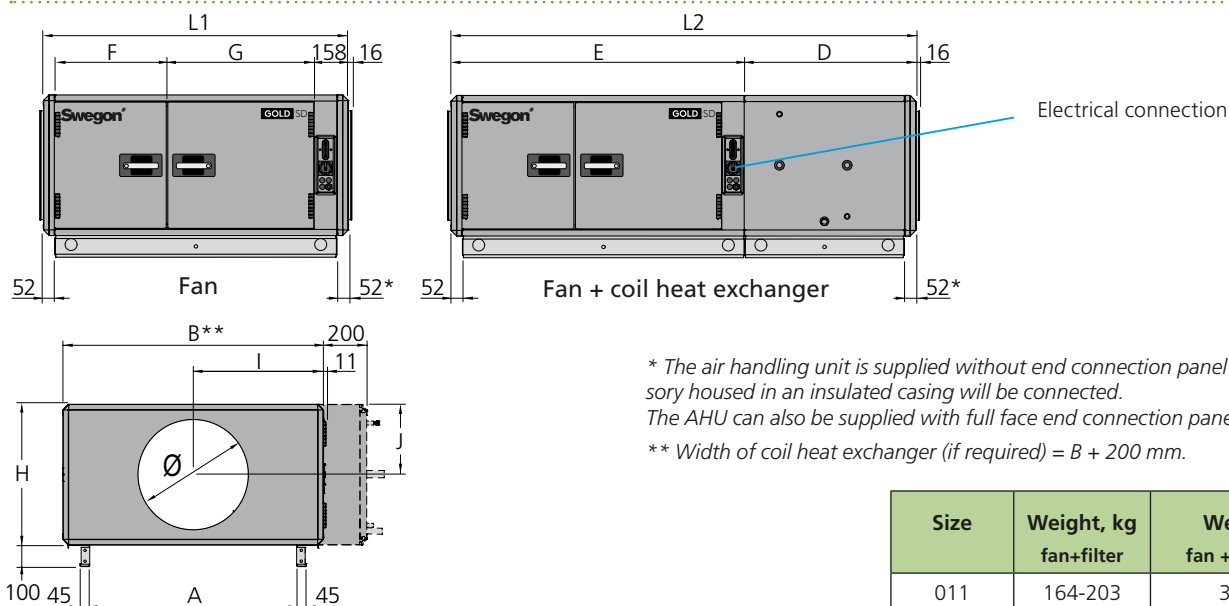
Left-hand version

Right-hand version



Duct connection options

A: Specify right-hand or left-hand version when ordering.



* The air handling unit is supplied without end connection panel if a duct accessory housed in an insulated casing will be connected.

The AHU can also be supplied with full face end connection panel (accessory).

** Width of coil heat exchanger (if required) = B + 200 mm.

Size	Weight, kg fan+filter	Weight, kg fan + filter + coil
011	164-203	348-393

Size	L1	L2	B	H	A	D	E	F	G	I	J	Ø
011	1404	2239	1199	647.5	953	887	1352	513	681	599.5	324	500

Clear space for inspection

A clear space of 800 mm should be provided in front of the unit.

Electrical connection

Capacity variant 1:

1-phase, 3-wire, 230 V -10/+15%, 50 Hz, 10 A

Capacity variant 2:

3-phase, 5-wire, 400 V -10/+15%, 50 Hz, 10 A

Rated data per fan

Capacity variant 1:

Motor shaft power: 1.15 kW, motor control system: 1 x 230 V, 50 Hz

Capacity variant 2:

Motor shaft power: 1.6 kW, motor control system: 3 x 400 V, 50 Hz

Sizing, installation, dimensions and weights

GOLD SD, size 011, split version

Delivery and transport within the site

The GOLD SD units are available in right-hand or left-hand version, as a fan section only, as a fan section and filter section or as a fan section, filter section and coil heat exchanger section.

The air handling unit can be supplied as one single unit or in an optional division of sections.

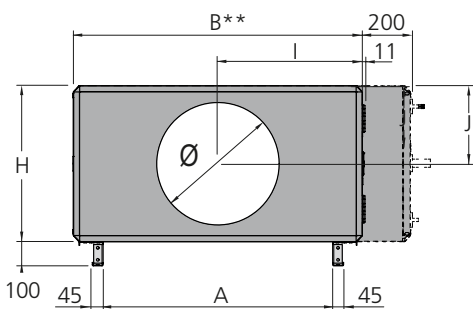
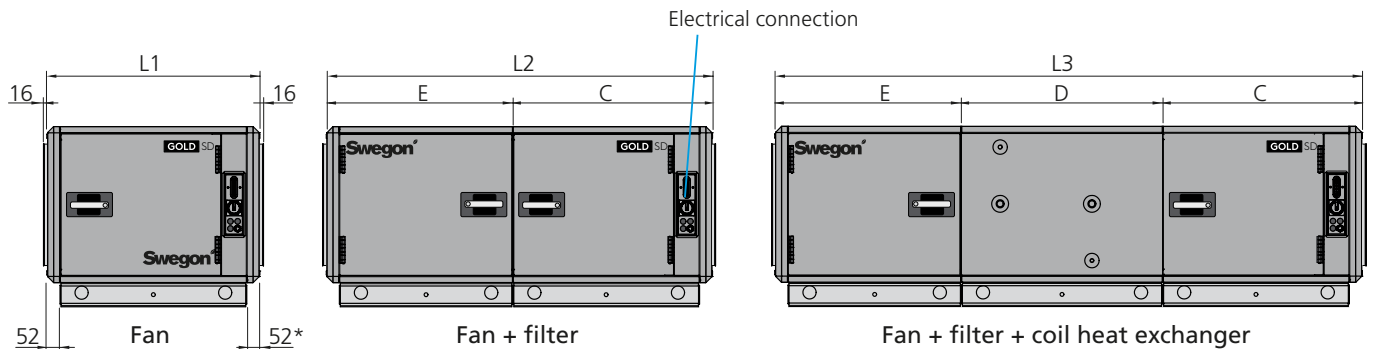
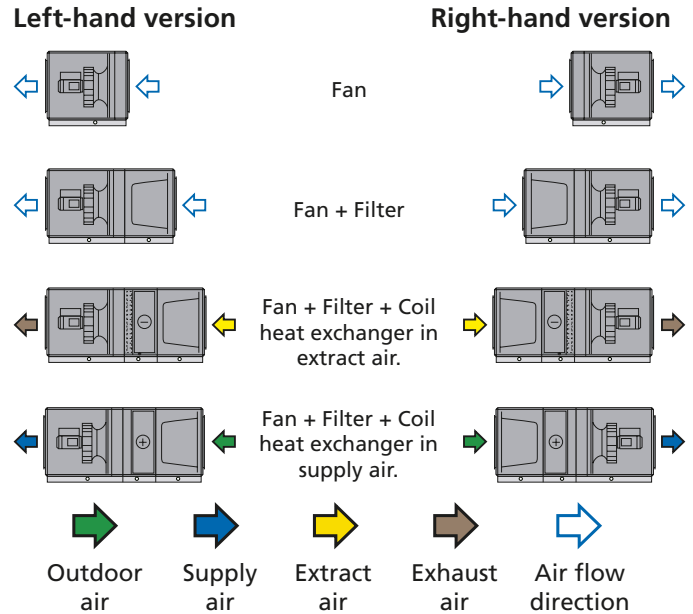
The unit sections are jointed together/split by means of bolts. The electrical and control cables between the unit sections have quick-fit connectors.

The GOLD SD can be used as a supply air or an extract air handling unit. If both supply air and extract air handling units are used in a ventilation system, the supply air unit is equipped with a control unit, but not the extract air unit. A communication cable is used to connect both air handling units to one another making it possible to control both units.

The air handling unit/unit sections is/are delivered on wooden beams.

Duct connection options

A: Specify right-hand or left-hand version when ordering.



* The air handling unit is supplied without end connection panel if a duct accessory housed in an insulated casing will be connected. The AHU can also be supplied with full face end connection panel (accessory).
 ** Width of coil heat exchanger (if required) = B + 200 mm.

Size	Weight, kg fan	Weight, kg fan+filter	Weight, kg fan + filter + coil
011	109-138	184-222	368-412

Size	L1	L2	L3	B	H	A	C	D	E	I	J	Ø
011	878	1598	2433	1199	647.5	953	828	835	772	599.5	324	400

Clear space for inspection

A clear space of 800 mm should be provided in front of the unit.

Rated data per fan

Capacity variant 1:

Motor shaft power: 1.15 kW,
 motor control system: 1 x 230 V, 50 Hz

Capacity variant 2:

Motor shaft power: 1.6 kW,
 motor control system: 3 x 400 V, 50 Hz

Electrical connection

Capacity variant 1:

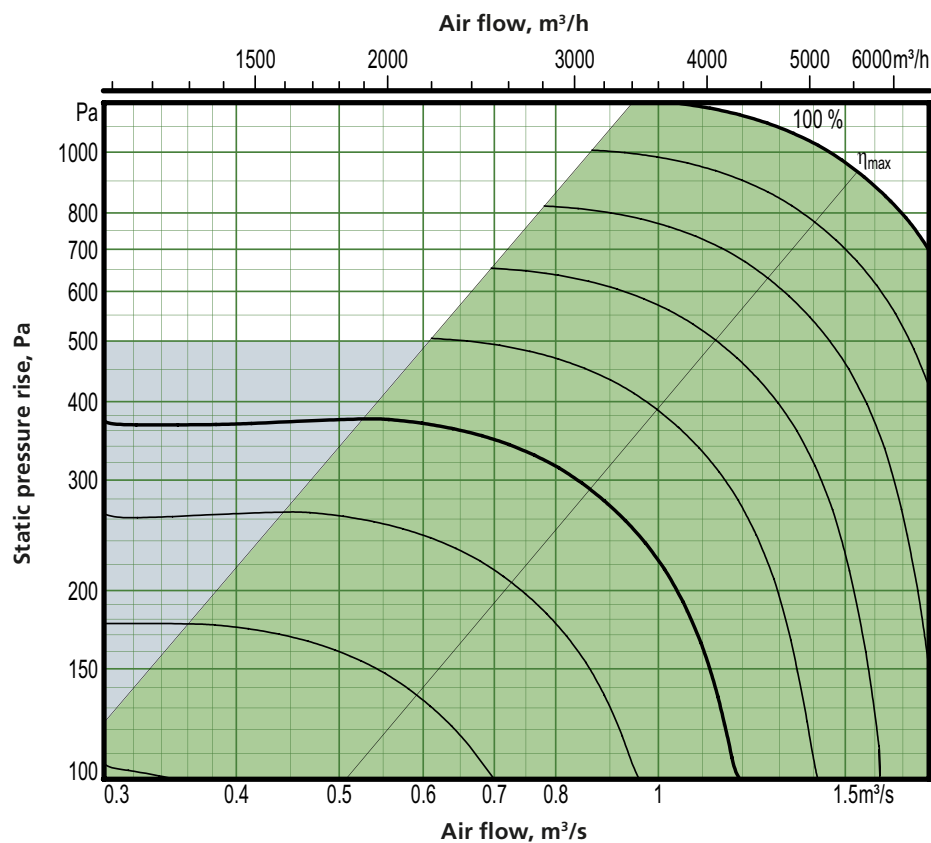
1-phase, 3-wire, 230 V -10/+15%, 50 Hz, 10 A

Capacity variant 2:

3-phase, 5-wire, 400 V -10/+15%, 50 Hz, 10 A

Sizing, installation, dimensions and weights

GOLD SD, size 012



Motor shaft power: 2.4 kW (capacity variant 2)

- Recommended working range for sizing.
- If pressure regulation is used, the air flow can be regulated to zero.
- However this presupposes a certain static pressure drop in the ducting (approx. 50 Pa).

Min. and max. air flows

The flows specified refer to those that can be preset in the hand-held terminal. The practical flow limits are determined by the external pressure drop.

Size	Min. airflow (on airflow regulation)		Max. airflow	
	m ³ /h	m ³ /s	m ³ /h	m ³ /s
012	720	0.20	6480	1.80

Exact sizing can be carried out in the AHU Design air handling unit selection program

Sizing, installation, dimensions and weights

GOLD SD, size 012, common casing

Delivery and transport within the site

The GOLD SD 012 units are available in right-hand or left-hand version, as a fan section only or as a fan section and coil heat exchanger section.

The air handling unit can be supplied as one single unit or divided into a fan section and coil heat exchanger section.

The unit sections are jointed together/split by means of bolts. The electrical and control cables between the unit sections have quick-fit connectors.

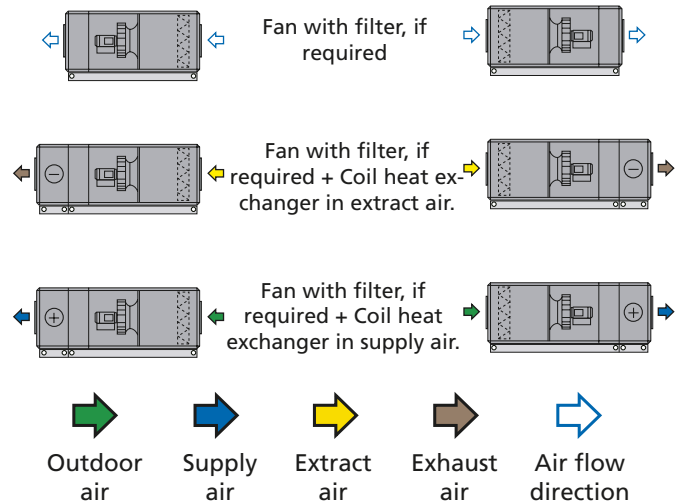
The GOLD SD can be used as a supply air or an extract air handling unit. If both supply air and extract air handling units are used in a ventilation system, the supply air unit is equipped with a control unit, but not the extract air unit. A communication cable is used to connect both air handling units to one another making it possible to control both units.

Filter holders for pleated filters are provided inside the fan section. Set of filters with pleated medium, pressure sensor, hoses and communication cable are optional extras.

The air handling unit/unit sections is/are delivered on wooden beams.

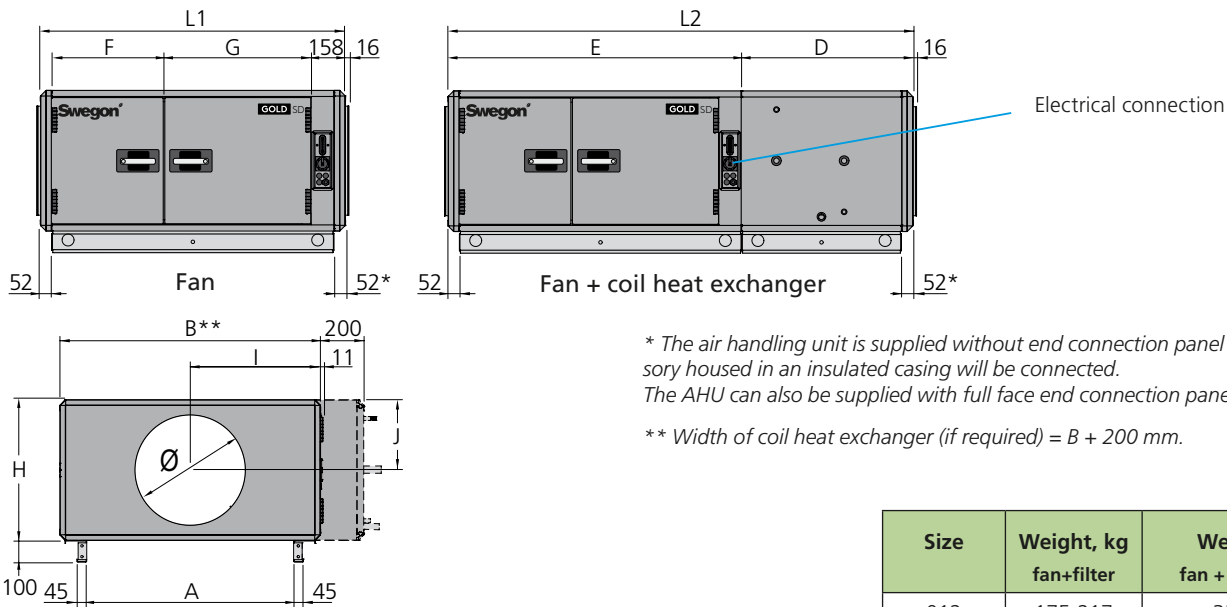
Left-hand version

Right-hand version



Duct connection options

A: Specify right-hand or left-hand version when ordering.



* The air handling unit is supplied without end connection panel if a duct accessory housed in an insulated casing will be connected. The AHU can also be supplied with full face end connection panel (accessory).

** Width of coil heat exchanger (if required) = B + 200 mm.

Size	Weight, kg fan+filter	Weight, kg fan + filter + coil
012	175-217	359-407

Size	L1	L2	B	H	A	D	E	F	G	I	J	Ø
012	1404	2239	1199	647.5	953	887	1352	513	681	599.5	324	500

Clear space for inspection

A clear space of 800 mm should be provided in front of the unit.

Electrical connection

3-phase, 5-wire, 400 V -10/+15%, 50 Hz, 10 A

Rated data per fan

Motor shaft power: 2.4 kW (1.6 kW* or 2.4 kW), motor control system: 3 x 400 V, 50 Hz

*The motor control system limits the output power to the value specified.

Sizing, installation, dimensions and weights

GOLD SD, size 012, split version

Delivery and transport within the site

The GOLD SD units are available in right-hand or left-hand version, as a fan section only, as a fan section and filter section or as a fan section, filter section and coil heat exchanger section.

The air handling unit can be supplied as one single unit or in an optional division of sections.

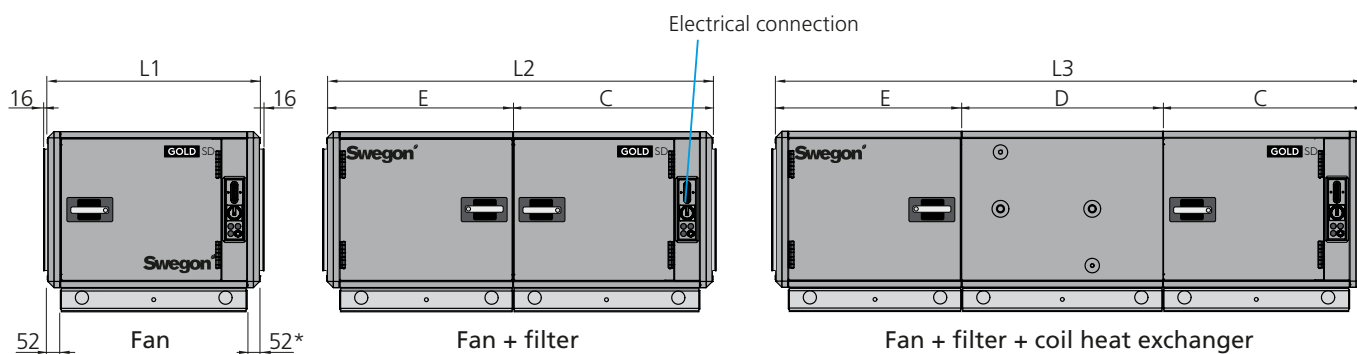
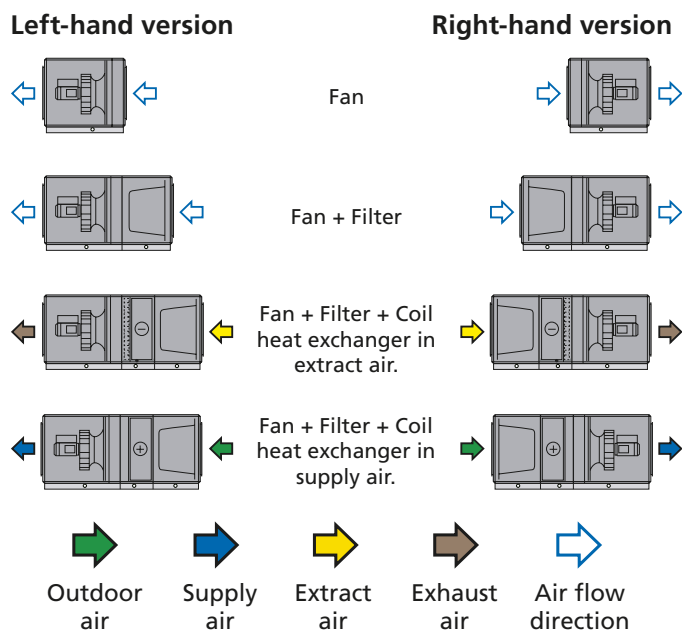
The unit sections are jointed together/split by means of bolts. The electrical and control cables between the unit sections have quick-fit connectors.

The GOLD SD can be used as a supply air or an extract air handling unit. If both supply air and extract air handling units are used in a ventilation system, the supply air unit is equipped with a control unit, but not the extract air unit. A communication cable is used to connect both air handling units to one another making it possible to control both units.

The air handling unit/unit sections is/are delivered on wooden beams.

Duct connection options

A: Specify right-hand or left-hand version when ordering.



* The air handling unit is supplied without end connection panel if a duct accessory housed in an insulated casing will be connected. The AHU can also be supplied with full face end connection panel (accessory).
 ** Width of coil heat exchanger (if required) = B + 200 mm.

Size	Weight, kg fan	Weight, kg fan+filter	Weight, kg fan + filter + coil
012	120-149	195-233	379-423

Size	L1	L2	L3	B	H	A	C	D	E	I	J	Ø
012	878	1598	2433	1199	647.5	953	828	835	772	599.5	324	400

Clear space for inspection

A clear space of 800 mm should be provided in front of the unit.

Electrical connection

3-phase, 5-wire, 400 V -10/+15%, 50 Hz, 10 A

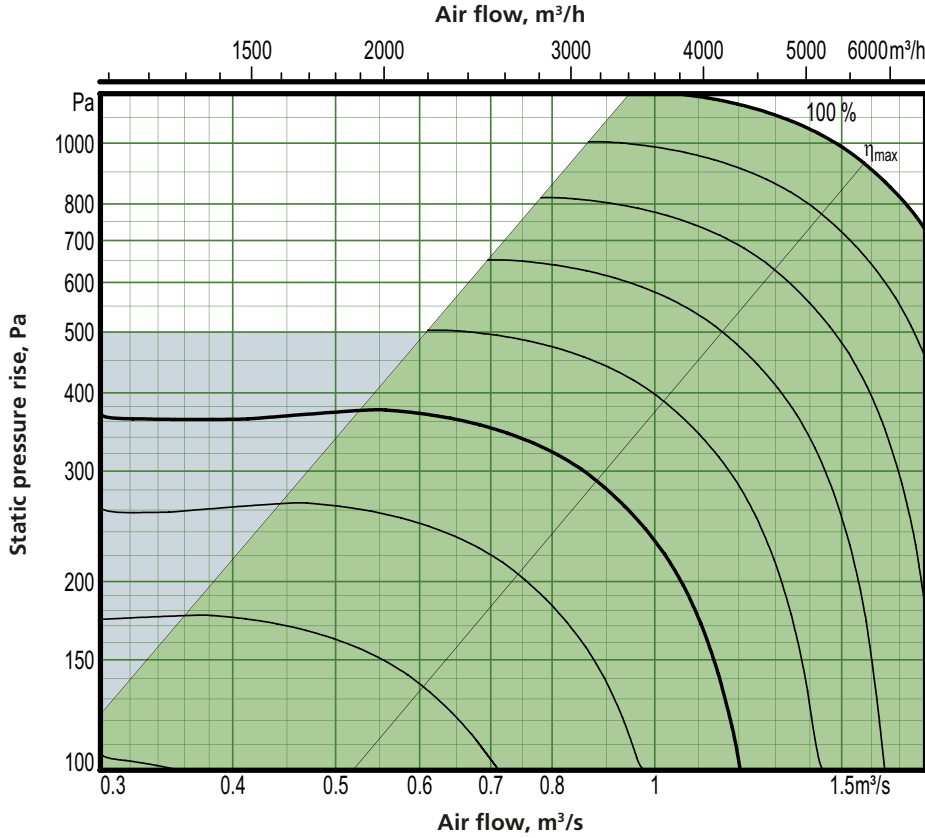
Rated data per fan

Motor shaft power: 2.4 kW (1.6 kW* or 2.4 kW),
 motor control system: 3 x 400 V, 50 Hz

*The motor control system limits the output power to the value specified.

Sizing, Installation, Dimensions and Weights

GOLD SD, size 014



Motor shaft power: 2.4 kW (capacity variant 2)

- Recommended working range for sizing.
- If pressure regulation is used, the air flow can be regulated to zero.
- However this presupposes a certain static pressure drop in the ducting (approx. 50 Pa).

Min. and max. airflows

The flows specified refer to those that can be preset in the hand-held terminal. The practical flow limits are determined by the external pressure drop.

Size	Min. airflow (on airflow regulation)		Max. airflow	
	m ³ /h	m ³ /s	m ³ /h	m ³ /s
014	720	0,20	6480	1,80

Exact sizing can be carried out in the AHU Design air handling unit selection program

Sizing, Installation, Dimensions and Weights

GOLD SD, size 014

Delivery and transport within the site

The GOLD SD 014 units are available in right-hand or left-hand version, as a fan section only, as a fan section and filter section or as a fan section, filter section and coil heat exchanger section.

The air handling unit can be supplied as one single unit or in an optional division of sections.

The unit sections are jointed together/split by means of bolts.

The electrical and control cables between the unit sections have quick-fit connectors.

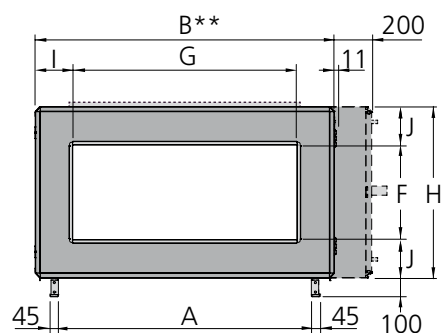
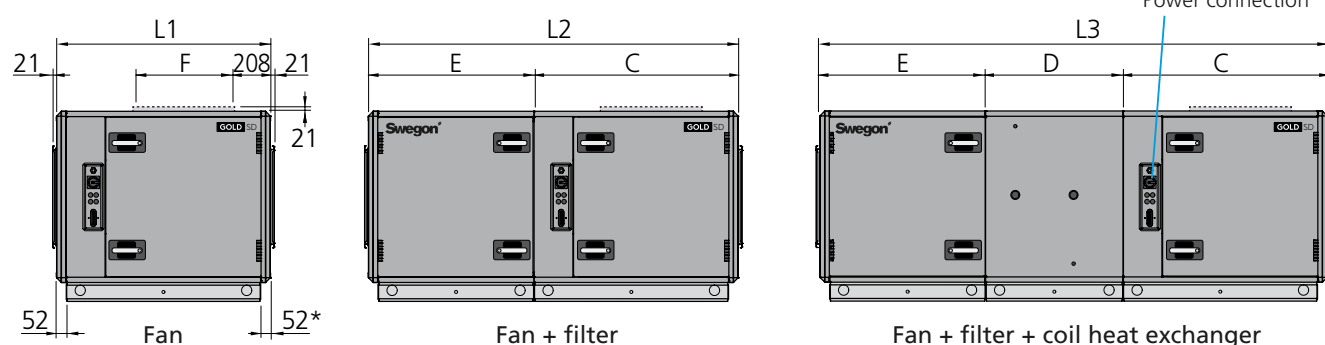
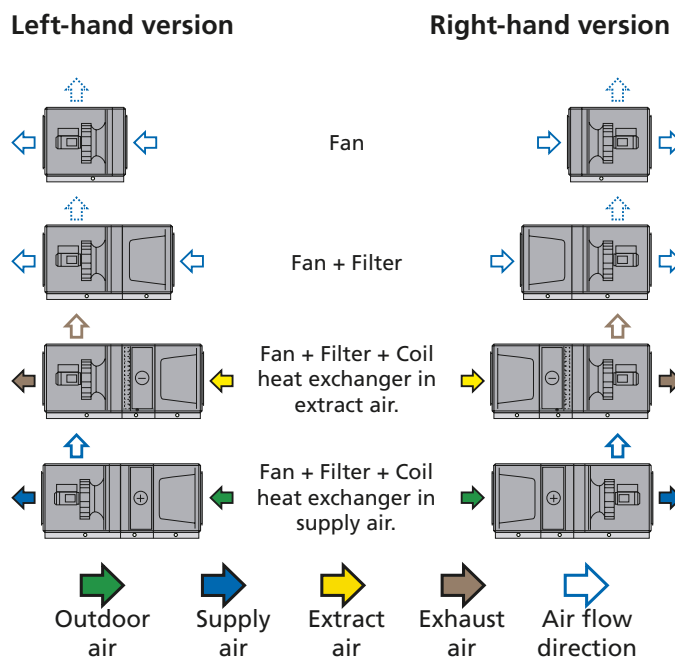
The GOLD SD can be used as a supply air or an extract air handling unit. If both supply air and extract air handling units are used in a ventilation system, the supply air unit is equipped with a control unit, but not the extract air unit. A communication cable is used to connect both air handling units to one another making it possible to control both units.

The air handling unit/unit sections is/are delivered on wooden beams.

Duct connection options

A: Specify right-hand or left-hand version when ordering.

B: Specify fan outlet for upward air discharge when placing orders (not applicable to outdoor units).



* The air handling unit is supplied without end connection panel if a duct accessory housed in an insulated casing will be connected.
The AHU can also be supplied with full face end connection panel (accessory).

** Width of coil heat exchanger (if required) = B + 200 mm.

Size	Weight, kg fan	Weight, kg fan+filter	Weight, kg fan + filter + coil
014	148-191	250-304	506-567

Size	L1	L2	L3	B	H	A	C	D	E	F	G	I	J
014	1040	1875	2710	1400	775,5	1154	988	835	887	400	1000	200	188

Clear space for inspection

A clear space of 900 mm should be provided in front of the unit.

Power connection

3-phase, 5-wire, 400 V -10/+15%, 50 Hz, 10 A

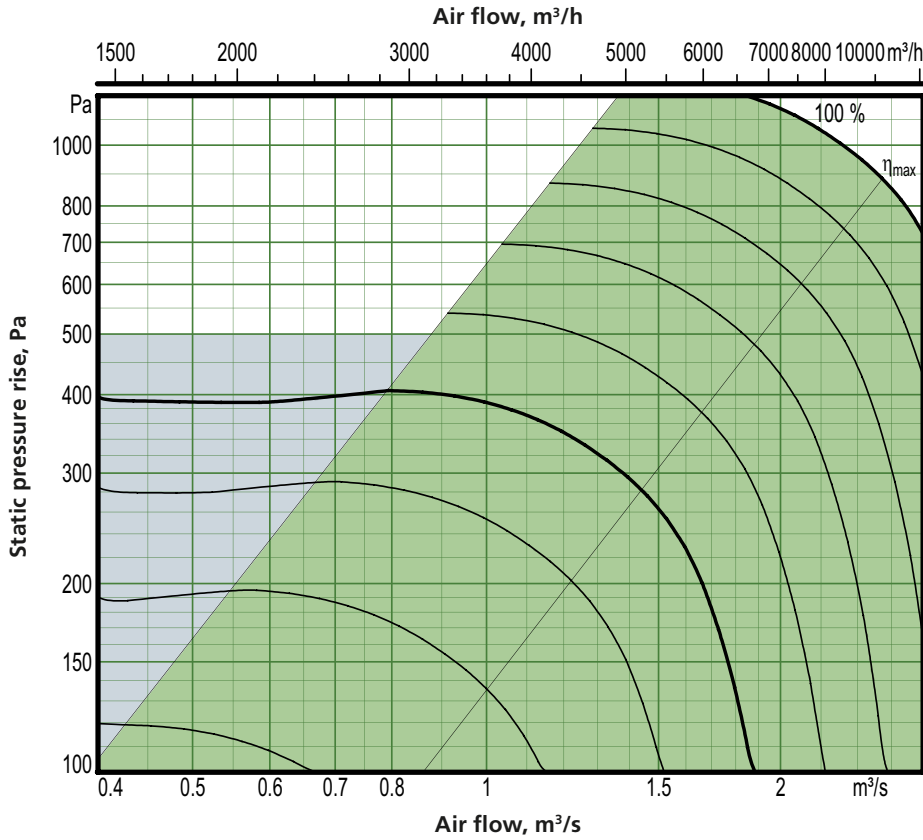
Rated data per fan

Motor shaft power: 2.4 kW (1.6 kW* or 2.4 kW),
motor control system: 3 x 400 V, 50 Hz

*The motor control system limits the output power to the value specified.

Sizing, Installation, Dimensions and Weights

GOLD SD, size 020



Motor shaft power: 3.4 kW (capacity variant 2)

- Recommended working range for sizing.
- If pressure regulation is used, the air flow can be regulated to zero.
- However this presupposes a certain static pressure drop in the ducting (approx. 50 Pa).

Min. and max. airflows

The flows specified refer to those that can be preset in the hand-held terminal. The practical flow limits are determined by the external pressure drop.

Size	Min. airflow (on airflow regulation)		Max. airflow	
	m³/h	m³/s	m³/h	m³/s
020	1080	0.30	10080	2.80

Exact sizing can be carried out in the AHU Design air handling unit selection program

Sizing, Installation, Dimensions and Weights

GOLD SD, size 020

Delivery and transport within the site

The GOLD SD 020 units are available in right-hand or left-hand version, as a fan section only, as a fan section and filter section or as a fan section, filter section and coil heat exchanger section.

The air handling unit can be supplied as one single unit or in an optional division of sections.

The unit sections are jointed together/split by means of bolts.

The electrical and control cables between the unit sections have quick-fit connectors.

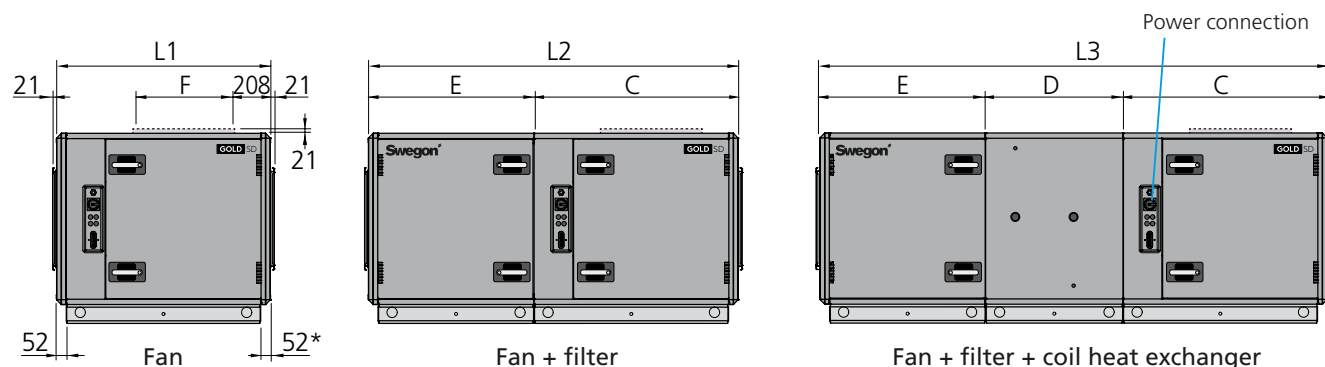
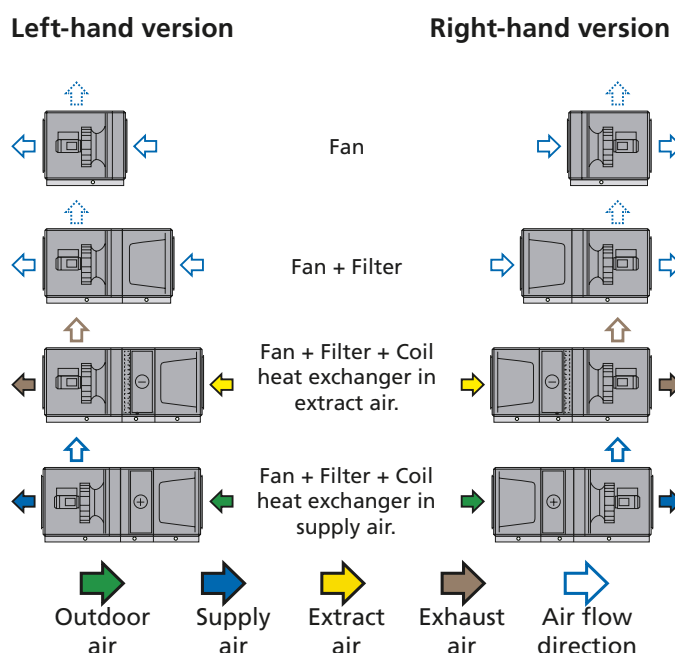
The GOLD SD can be used as a supply air or an extract air handling unit. If both supply air and extract air handling units are used in a ventilation system, the supply air unit is equipped with a control unit, but not the extract air unit. A communication cable is used to connect both air handling units to one another making it possible to control both units.

The air handling unit/unit sections is/are delivered on wooden beams.

Duct connection options

A: Specify right-hand or left-hand version when ordering.

B: Specify fan outlet for upward air discharge when placing orders (not applicable to outdoor units).



* The air handling unit is supplied without end connection panel if a duct accessory housed in an insulated casing will be connected.
The AHU can also be supplied with full face end connection panel (accessory).

** Width of coil heat exchanger (if required) = B + 200 mm.

Size	Weight, kg fan	Weight, kg fan+filter	Weight, kg fan + filter + coil
020	158-211	260-324	516-587

Size	L1	L2	L3	B	H	A	C	D	E	F	G	I	J
020	1040	1875	2710	1400	775,5	1154	988	835	887	400	1000	200	188

Clear space for inspection

A clear space of 900 mm should be provided in front of the unit.

Power connection

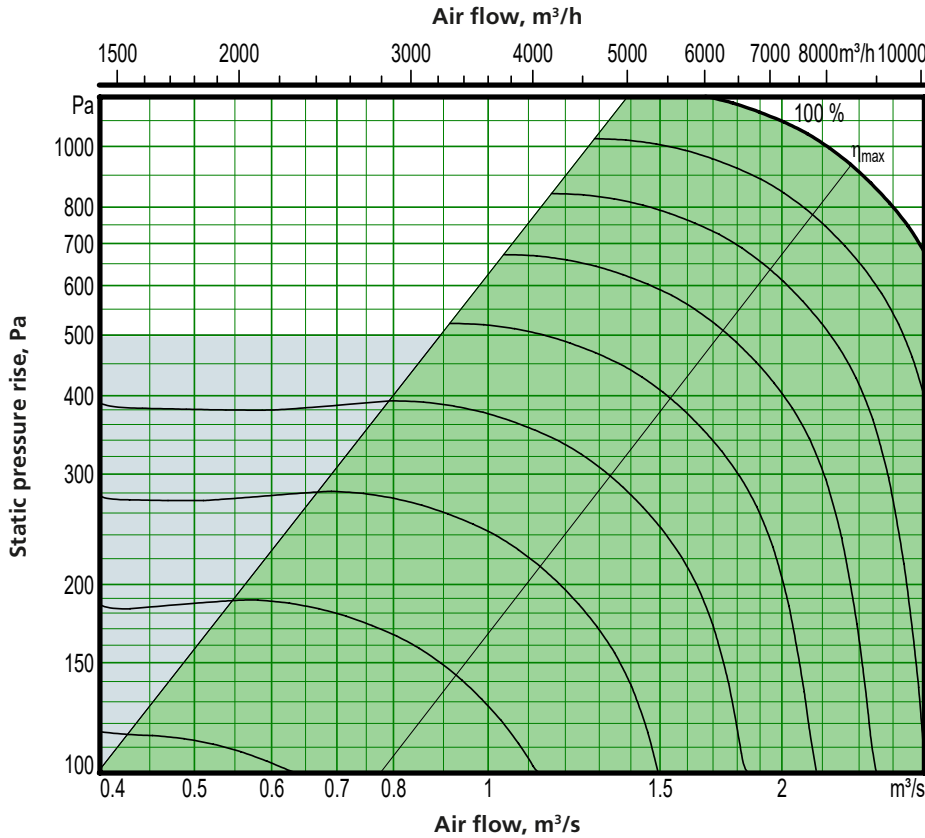
3-phase, 5-wire, 400 V -10/+15%, 50 Hz, 10 A

Rated data per fan

Motor shaft power: 2.4 kW alt. 3.4 kW, motor control system, 3 x 400 V, 50 Hz

Sizing, Installation, Dimensions and Weights

GOLD SD, size 025



Motor shaft power: 3.4 kW (capacity variant 2)

- Recommended working range for sizing.
- If pressure regulation is used, the air flow can be regulated to zero.
- However this presupposes a certain static pressure drop in the ducting (approx. 50 Pa).

Min. and max. airflows

The flows specified refer to those that can be preset in the hand-held terminal. The practical flow limits are determined by the external pressure drop.

Size	Min. airflow (on airflow regulation)		Max. airflow	
	m³/h	m³/s	m³/h	m³/s
025	1080	0,30	10080	2,80

Exact sizing can be carried out in the AHU Design air handling unit selection program

Sizing, Installation, Dimensions and Weights

GOLD SD, size 025

Delivery and transport within the site

The GOLD SD 025 units are available in right-hand or left-hand version, as a fan section only, as a fan section and filter section or as a fan section, filter section and coil heat exchanger section.

The air handling unit can be supplied as one single unit or in an optional division of sections.

The unit sections are jointed together/split by means of bolts.

The electrical and control cables between the unit sections have quick-fit connectors.

The GOLD SD can be used as a supply air or an extract air handling unit. If both supply air and extract air handling units are used in a ventilation system, the supply air unit is equipped with a control unit, but not the extract air unit. A communication cable is used to connect both air handling units to one another making it possible to control both units.

The air handling unit/unit sections is/are delivered on wooden beams.

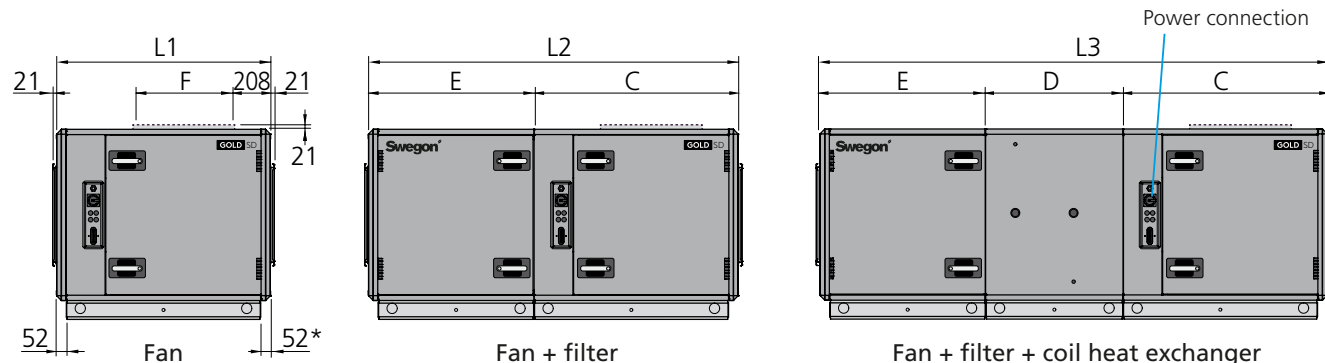
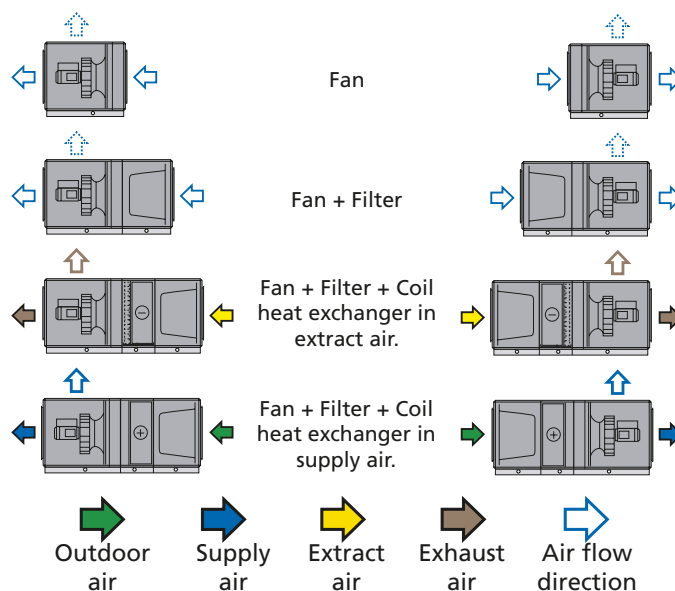
Duct connection options

A: Specify right-hand or left-hand version when ordering.

B: Specify fan outlet for upward air discharge when placing orders (not applicable to outdoor units).

Left-hand version

Right-hand version



* The air handling unit is supplied without end connection panel if a duct accessory housed in an insulated casing will be connected.

The AHU can also be supplied with full face end connection panel (accessory).

** Width of coil heat exchanger (if required) = B + 200 mm.

Size	Weight, kg fan	Weight, kg fan+filter	Weight, kg fan + filter + coil
025	190-252	308-382	616-699

Size	L1	L2	L3	B	H	A	C	D	E	F	G	I	J
025	1144	1978	2813	1600	905,5	1354	1092	835	886	500	1200	200	203

Clear space for inspection

A clear space of 900 mm should be provided in front of the unit.

Power connection

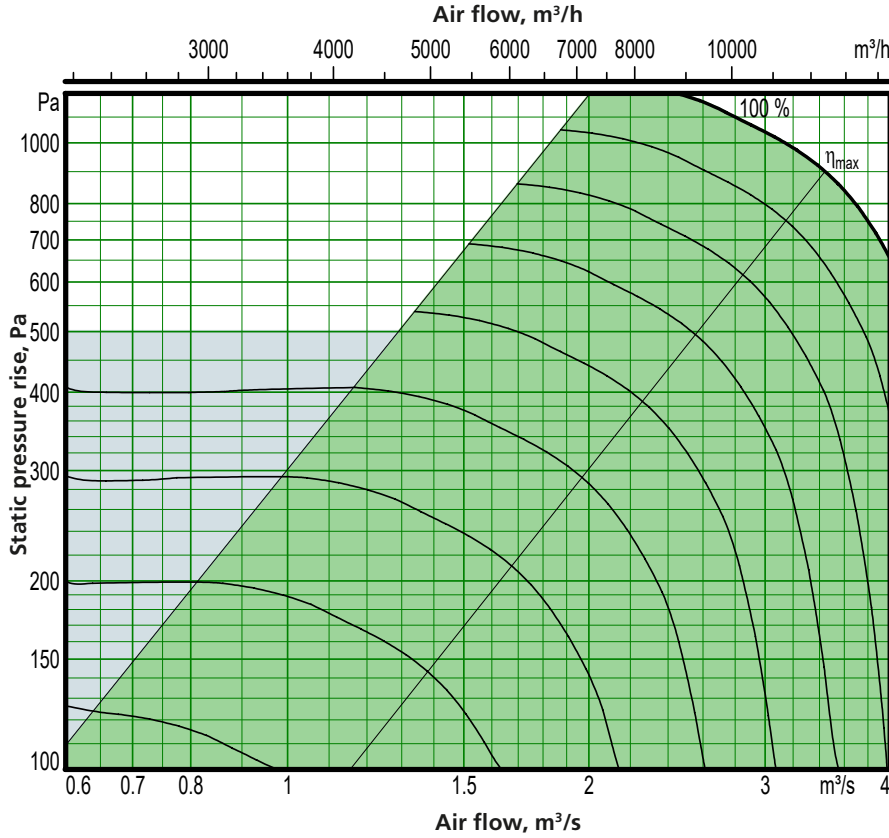
3-phase, 5-wire, 400 V -10/+15%, 50 Hz, 10 A

Rated data per fan

Motor shaft power: 2.4 kW alt. 3.4 kW, motor control system: 3 x 400 V, 50 Hz

Sizing, Installation, Dimensions and Weights

GOLD SD, size 030



Motor shaft power: 5.0 kW (capacity variant 2)

- Recommended working range for sizing.
- If pressure regulation is used, the air flow can be regulated to zero.
- However this presupposes a certain static pressure drop in the ducting (approx. 50 Pa).

Min. and max. airflows

The flows specified refer to those that can be preset in the hand-held terminal. The practical flow limits are determined by the external pressure drop.

Size	Min. airflow (on airflow regulation)		Max. airflow	
	m³/h	m³/s	m³/h	m³/s
030	1800	0.50	14400	4.00

Exact sizing can be carried out in the AHU Design air handling unit selection program

Sizing, Installation, Dimensions and Weights

GOLD SD, size 030

Delivery and transport within the site

The GOLD SD 030 units are available in right-hand or left-hand version, as a fan section only, as a fan section and filter section or as a fan section, filter section and coil heat exchanger section.

The air handling unit can be supplied as one single unit or in an optional division of sections.

The unit sections are jointed together/split by means of bolts.

The electrical and control cables between the unit sections have quick-fit connectors.

The GOLD SD can be used as a supply air or an extract air handling unit. If both supply air and extract air handling units are used in a ventilation system, the supply air unit is equipped with a control unit, but not the extract air unit. A communication cable is used to connect both air handling units to one another making it possible to control both units.

The air handling unit/unit sections is/are delivered on wooden beams.

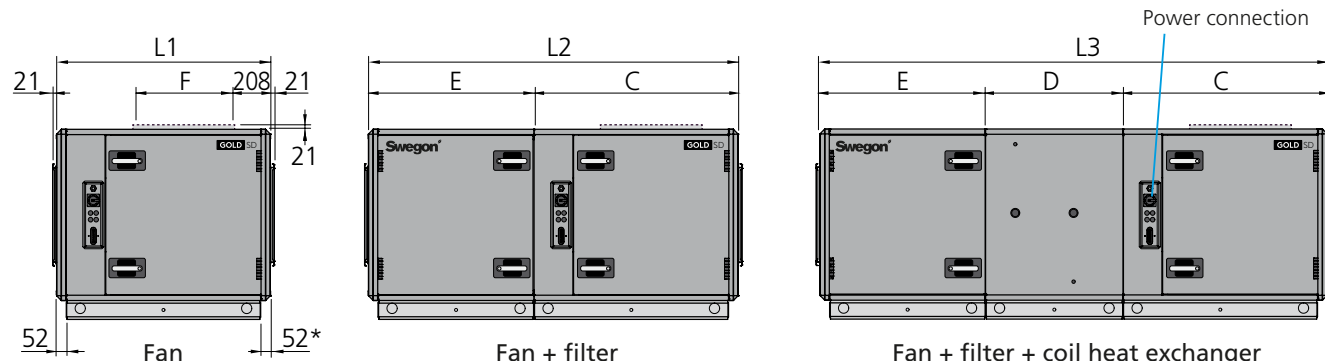
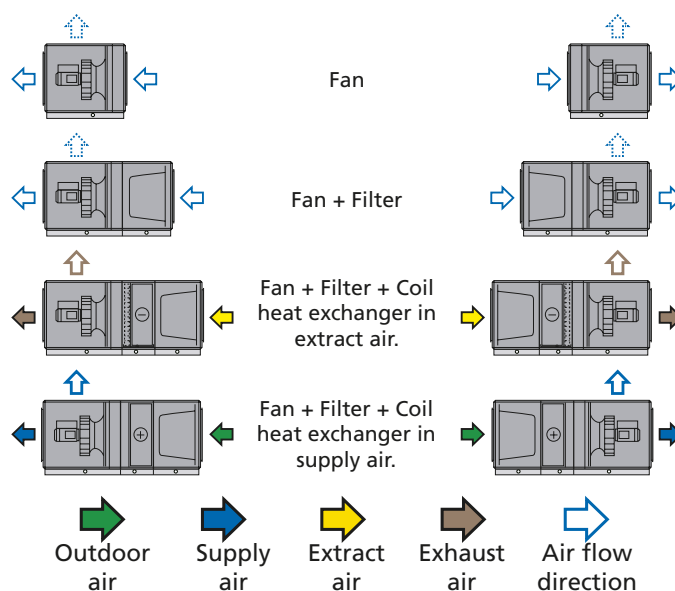
Duct connection options

A: Specify right-hand or left-hand version when ordering.

B: Specify fan outlet for upward air discharge when placing orders (not applicable to outdoor units).

Left-hand version

Right-hand version



* The air handling unit is supplied without end connection panel if a duct accessory housed in an insulated casing will be connected. The AHU can also be supplied with full face end connection panel (accessory).

** Width of coil heat exchanger (if required) = B + 200 mm.

Size	Weight, kg fan	Weight, kg fan+filter	Weight, kg fan + filter + coil
030	216-264	351-411	659-728

Size	L1	L2	L3	B	H	A	C	D	E	F	G	I	J
030	1144	1978	2813	1600	905,5	1354	1092	835	886	500	1200	200	203

Clear space for inspection

A clear space of 900 mm should be provided in front of the unit.

Power connection

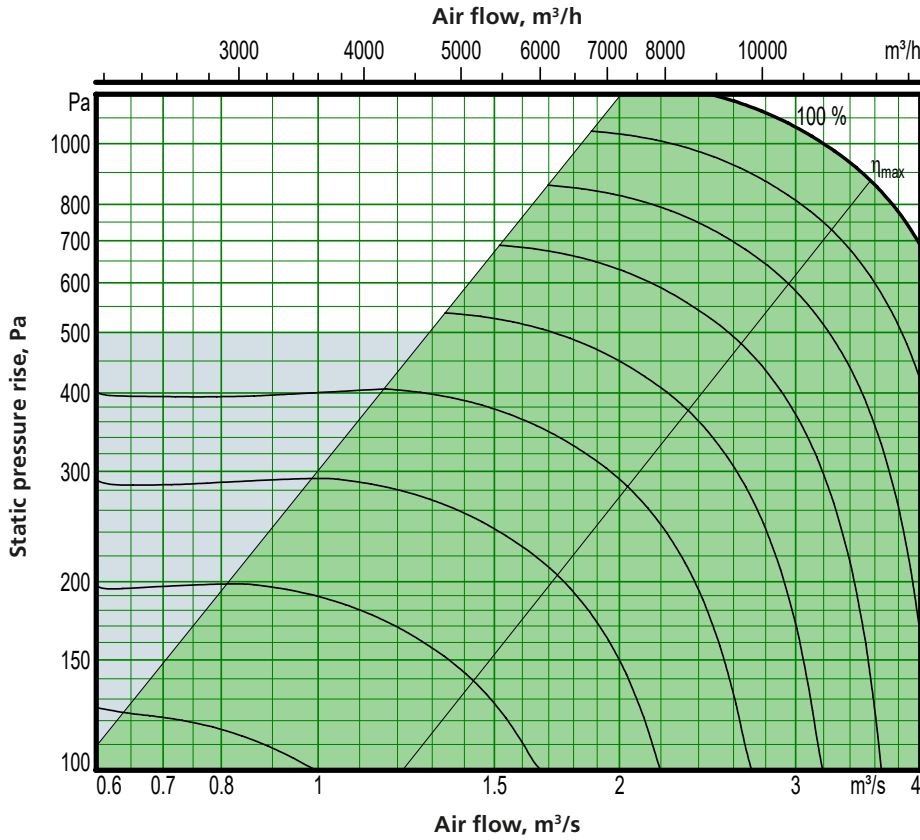
3-phase, 5-wire, 400 V -10/+15%, 50 Hz, 10 A

Rated data per fan

Motor shaft power: 4.0 kW alt. 5.0 kW, motor control system, 3 x 400 V, 50 Hz

Sizing, Installation, Dimensions and Weights

GOLD SD, size 035



Motor shaft power: 5.0 kW (capacity variant 2)

- Recommended working range for sizing.
- If pressure regulation is used, the air flow can be regulated to zero.
- However this presupposes a certain static pressure drop in the ducting (approx. 50 Pa).

Min. and max. airflows

The flows specified refer to those that can be preset in the hand-held terminal. The practical flow limits are determined by the external pressure drop.

Size	Min. airflow (on airflow regulation)		Max. airflow	
	m³/h	m³/s	m³/h	m³/s
035	1800	0,50	14400	4.00

Exact sizing can be carried out in the AHU Design air handling unit selection program

Sizing, Installation, Dimensions and Weights

GOLD SD, size 035

Delivery and transport within the site

The GOLD SD 035 units are available in right-hand or left-hand version, as a fan section only, as a fan section and filter section or as a fan section, filter section and coil heat exchanger section.

The air handling unit can be supplied as one single unit or in an optional division of sections.

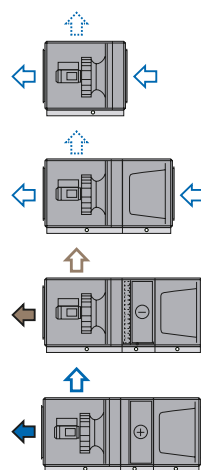
The unit sections are jointed together/split by means of bolts.

The electrical and control cables between the unit sections have quick-fit connectors.

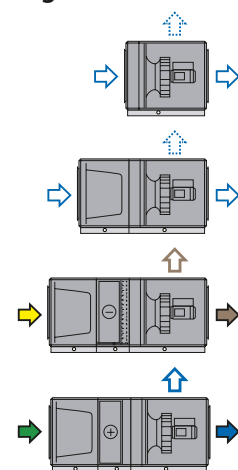
The GOLD SD can be used as a supply air or an extract air handling unit. If both supply air and extract air handling units are used in a ventilation system, the supply air unit is equipped with a control unit, but not the extract air unit. A communication cable is used to connect both air handling units to one another making it possible to control both units.

The air handling unit/unit sections is/are delivered on wooden beams.

Left-hand version



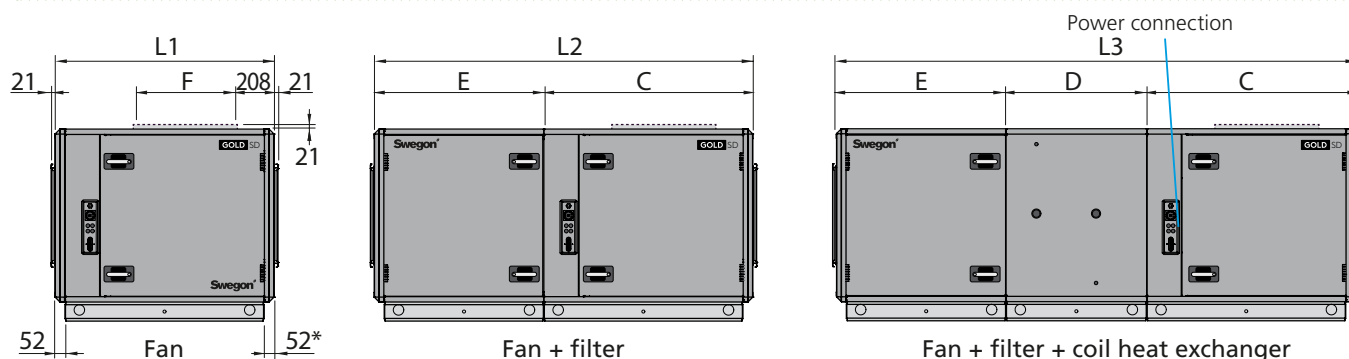
Right-hand version



Duct connection options

A: Specify right-hand or left-hand version when ordering.

B: Specify fan outlet for upward air discharge when placing orders (Does not apply to units installed outdoors).



* The air handling unit is supplied without end connection panel if a duct accessory housed in an insulated casing will be connected. The AHU can also be supplied with full face end connection panel (accessory).

** Width of coil heat exchanger (if required) = B + 200 mm.

Size	Weight, kg fan	Weight, kg fan+filter	Weight, kg fan + filter + coil
035	263-332	413-513	853-966

Size	L1	L2	L3	B	H	A	C	D	E	F	G	I	J
035	1253	2088	2988	1990	1079.5	1744	1202	900	886	600	1400	295	239.5

Clear space for inspection

A clear space of 900 mm should be provided in front of the unit.

Power connection

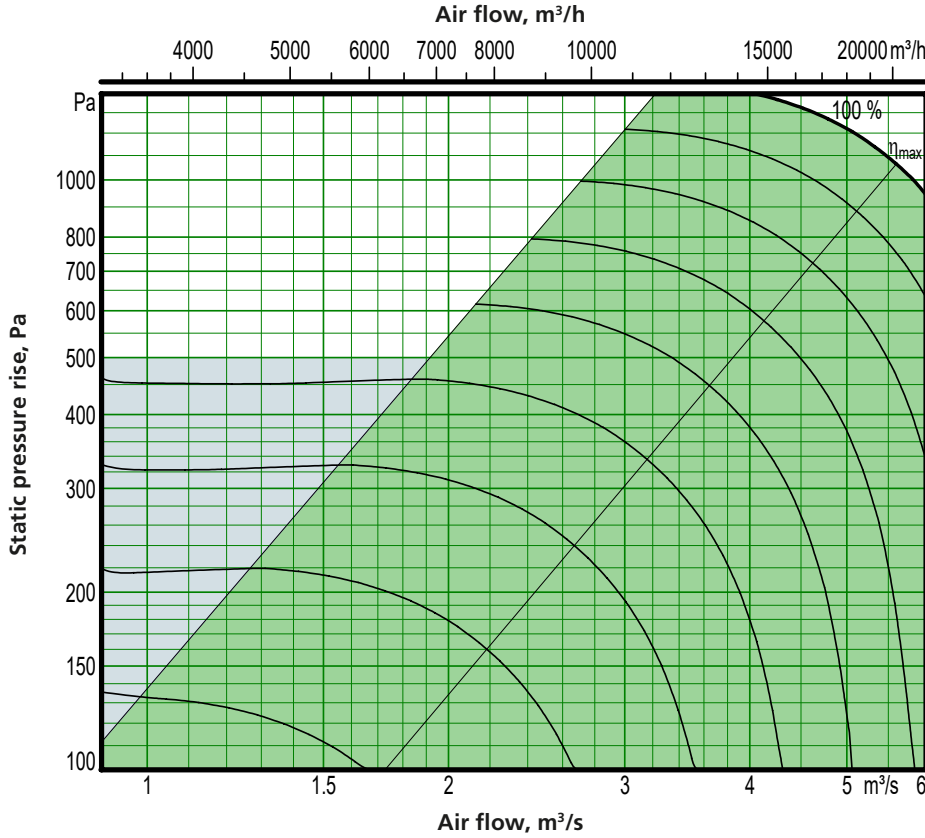
3-phase, 5-wire, 400 V -10/+15%, 50 Hz, 10 A

Rated data per fan

Motor shaft power: 4.0 kW alt. 5.0 kW, motor control system, 3 x 400 V, 50 Hz

Sizing, Installation, Dimensions and Weights

GOLD SD, size 040



Motor shaft power: 10 kW (capacity variant 2)

- Recommended working range for sizing.
- If pressure regulation is used, the air flow can be regulated to zero.
- However this presupposes a certain static pressure drop in the ducting (approx. 50 Pa).

Min. and max. airflows

The flows specified refer to those that can be preset in the hand-held terminal. The practical flow limits are determined by the external pressure drop.

Size	Min. airflow (on airflow regulation)		Max. airflow	
	m³/h	m³/s	m³/h	m³/s
040	2700	0,75	21600	6.00

Exact sizing can be carried out in the AHU Design air handling unit selection program

Sizing, Installation, Dimensions and Weights

GOLD SD, size 040

Delivery and transport within the site

The GOLD SD 040 units are available in right-hand or left-hand version, as a fan section only, as a fan section and filter section or as a fan section, filter section and coil heat exchanger section.

The air handling unit can be supplied as one single unit or in an optional division of sections.

The unit sections are jointed together/split by means of bolts.

The electrical and control cables between the unit sections have quick-fit connectors.

The GOLD SD can be used as a supply air or an extract air handling unit. If both supply air and extract air handling units are used in a ventilation system, the supply air unit is equipped with a control unit, but not the extract air unit. A communication cable is used to connect both air handling units to one another making it possible to control both units.

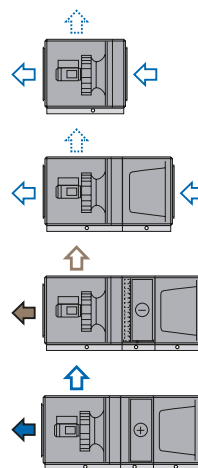
The air handling unit/unit sections is/are delivered on wooden beams.

Duct connection options

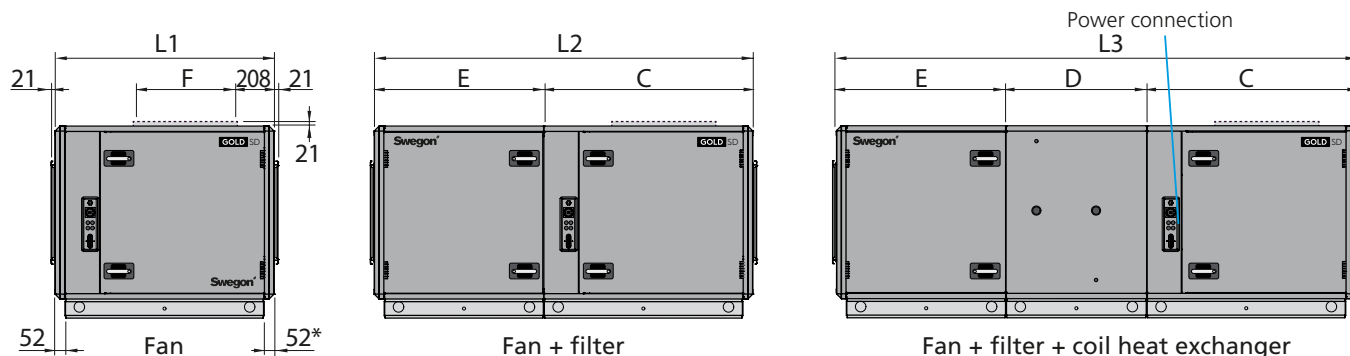
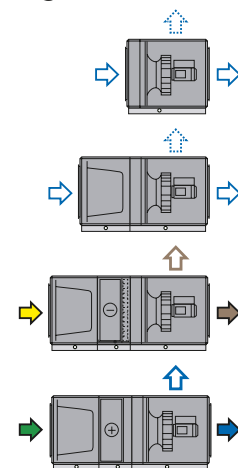
A: Specify right-hand or left-hand version when ordering.

B: Specify fan outlet for upward air discharge when placing orders (Does not apply to units installed outdoors).

Left-hand version



Right-hand version



* The air handling unit is supplied without end connection panel if a duct accessory housed in an insulated casing will be connected.
 The AHU can also be supplied with full face end connection panel (accessory).
 ** Width of coil heat exchanger (if required) = B + 200 mm.

Size	Weight, kg fan	Weight, kg fan+filter	Weight, kg fan + filter + coil
040	288-366	438-547	878-1000

Size	L1	L2	L3	B	H	A	C	D	E	F	G	I	J
040	1253	2088	2988	1990	1079.5	1744	1202	900	886	600	1400	295	239.5

Clear space for inspection

A clear space of 900 mm should be provided in front of the unit.

Power connection

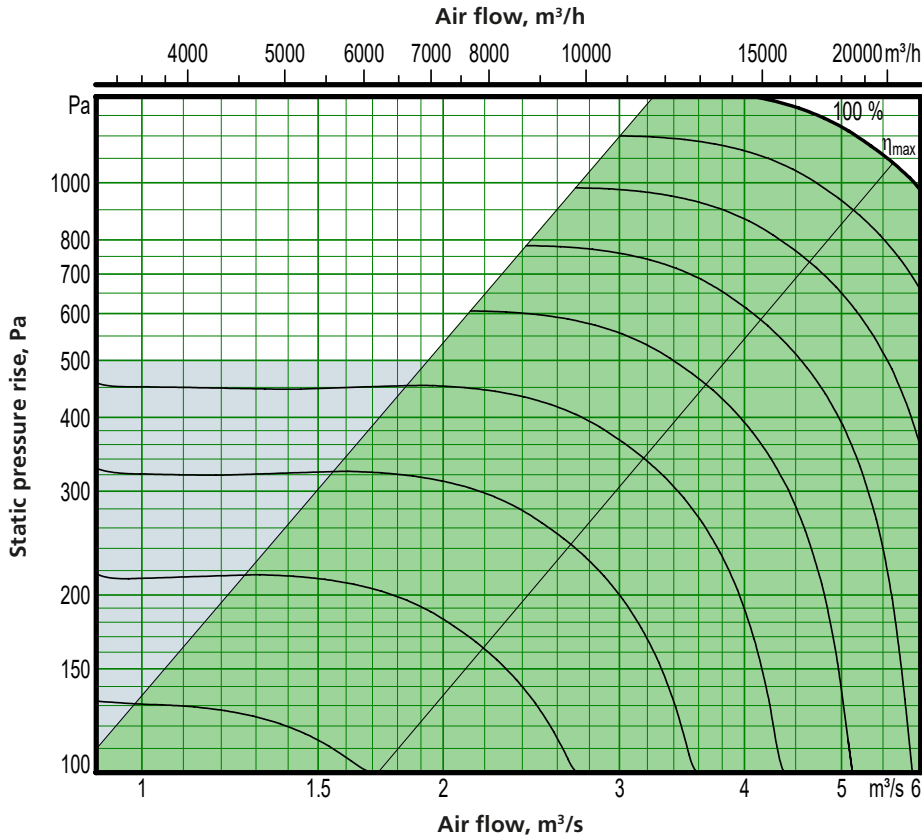
3-phase, 5-wire, 400 V -10/+15%, 50 Hz, 16 A (capacity variant 1) alt. 20 A (capacity variant 2)

Rated data per fan

Motor shaft power: 6.5 kW alt. 2 x 10 kW, motor control system: 3 x 400 V, 50 Hz

Sizing, Installation, Dimensions and Weights

GOLD SD, size 050



Motor shaft power: 10 kW (capacity variant 2)

- Recommended working range for sizing.
- If pressure regulation is used, the air flow can be regulated to zero.
- However this presupposes a certain static pressure drop in the ducting (approx. 50 Pa).

Min. and max. airflows

The flows specified refer to those that can be preset in the hand-held terminal. The practical flow limits are determined by the external pressure drop.

Size	Min. airflow (on airflow regulation)		Max. airflow	
	m ³ /h	m ³ /s	m ³ /h	m ³ /s
050	2700	0,75	20160	5,60

Exact sizing can be carried out in the AHU Design air handling unit selection program

Sizing, Installation, Dimensions and Weights

GOLD SD, size 050

Delivery and transport within the site

The GOLD SD 050 units are available in right-hand or left-hand version, as a fan section only, as a fan section and filter section or as a fan section, filter section and coil heat exchanger section.

The air handling unit can be supplied as one single unit or in an optional division of sections.

The unit sections are jointed together/split by means of bolts.

The electrical and control cables between the unit sections have quick-fit connectors.

The GOLD SD can be used as a supply air or an extract air handling unit. If both supply air and extract air handling units are used in a ventilation system, the supply air unit is equipped with a control unit, but not the extract air unit. A communication cable is used to connect both air handling units to one another making it possible to control both units.

The air handling unit/unit sections is/are delivered on wooden beams.

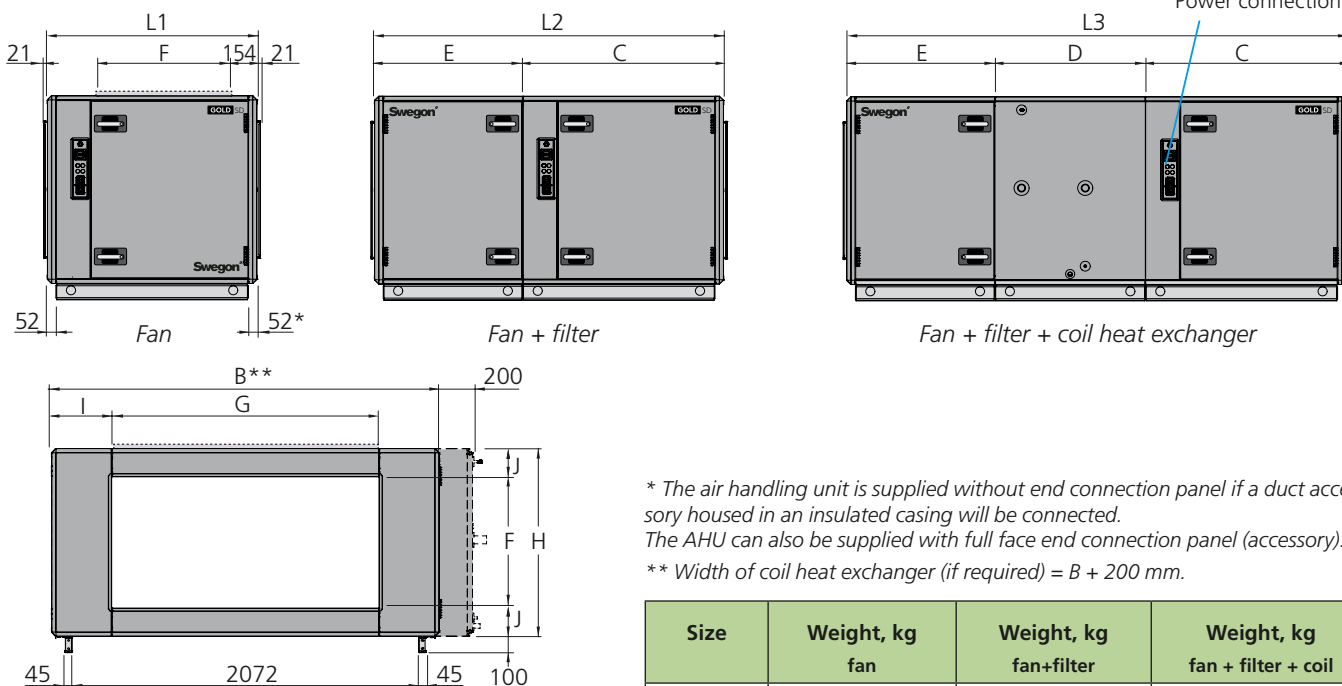
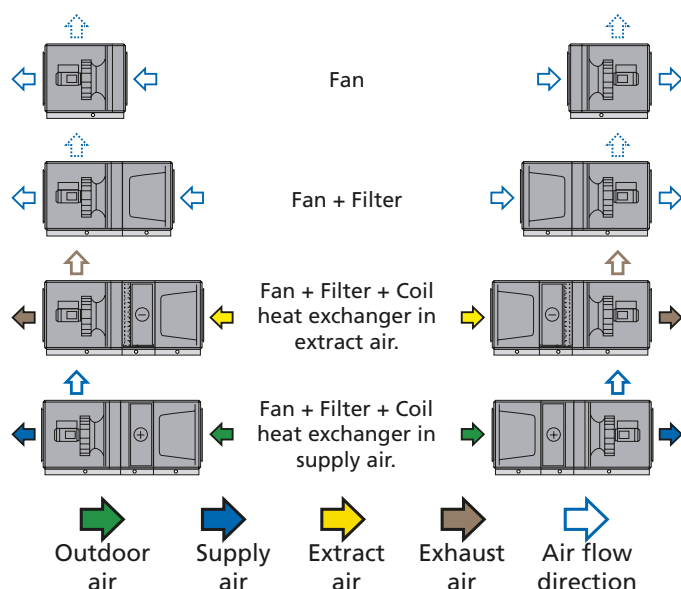
Duct connection options

A: Specify right-hand or left-hand version when ordering.

B: Specify fan outlet for upward air discharge when placing orders (Does not apply to units installed outdoors).

Left-hand version

Right-hand version



* The air handling unit is supplied without end connection panel if a duct accessory housed in an insulated casing will be connected.

The AHU can also be supplied with full face end connection panel (accessory).

** Width of coil heat exchanger (if required) = B + 200 mm.

Size	Weight, kg fan	Weight, kg fan+filter	Weight, kg fan + filter + coil
050	331-410	516-634	1058-1190

Size	L1	L2	L3	B	H	C	D	E	F	G	I	J
050	1253	2088	2988	2318	1144	1202	900	886	800	1600	359	172

Clear space for inspection

A clear space of 900 mm should be provided in front of the unit.

Power connection

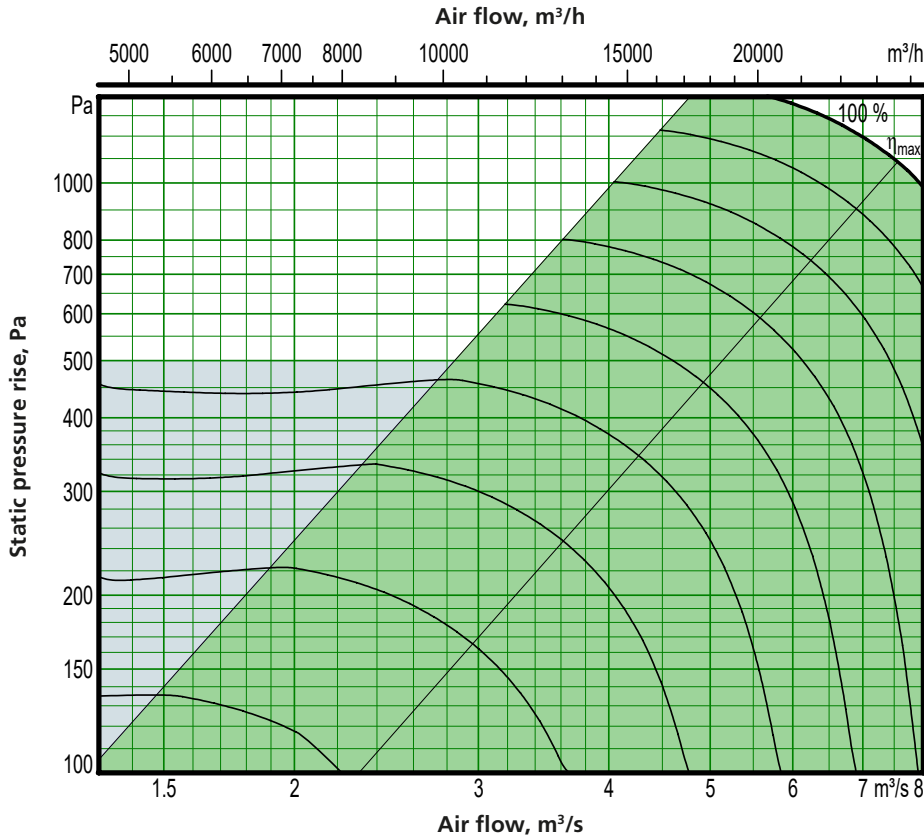
3-phase, 5-wire, 400 V -10/+15%, 50 Hz, 16 A (capacity variant 1) alt. 20 A (capacity variant 2)

Rated data per fan

Motor shaft power: 6.5 kW alt. 2 x 10 kW, motor control system: 3 x 400 V, 50 Hz

Sizing, Installation, Dimensions and Weights

GOLD SD, size 060



Motor shaft power: 2 x 6.5 kW (capacity variant 2)

- Recommended working range for sizing.
- If pressure regulation is used, the air flow can be regulated to zero.
- However this presupposes a certain static pressure drop in the ducting (approx. 50 Pa).

Min. and max. airflows

The flows specified refer to those that can be preset in the hand-held terminal. The practical flow limits are determined by the external pressure drop.

Size	Min. airflow (on airflow regulation)		Max. airflow	
	m³/h	m³/s	m³/h	m³/s
060	3600	1,00	28800	8,00

Exact sizing can be carried out in the AHU Design air handling unit selection program

Sizing, Installation, Dimensions and Weights

GOLD SD, size 060

Delivery and transport within the site

The GOLD SD 060 units are available in right-hand or left-hand version, as a fan section only, as a fan section and filter section or as a fan section, filter section and coil heat exchanger section.

The air handling unit can be supplied as one single unit or in an optional division of sections.

The unit sections are jointed together/split by means of bolts.

The electrical and control cables between the unit sections have quick-fit connectors.

The GOLD SD can be used as a supply air or an extract air handling unit. If both supply air and extract air handling units are used in a ventilation system, the supply air unit is equipped with a control unit, but not the extract air unit. A communication cable is used to connect both air handling units to one another making it possible to control both units.

The air handling unit/unit sections is/are delivered on wooden beams.

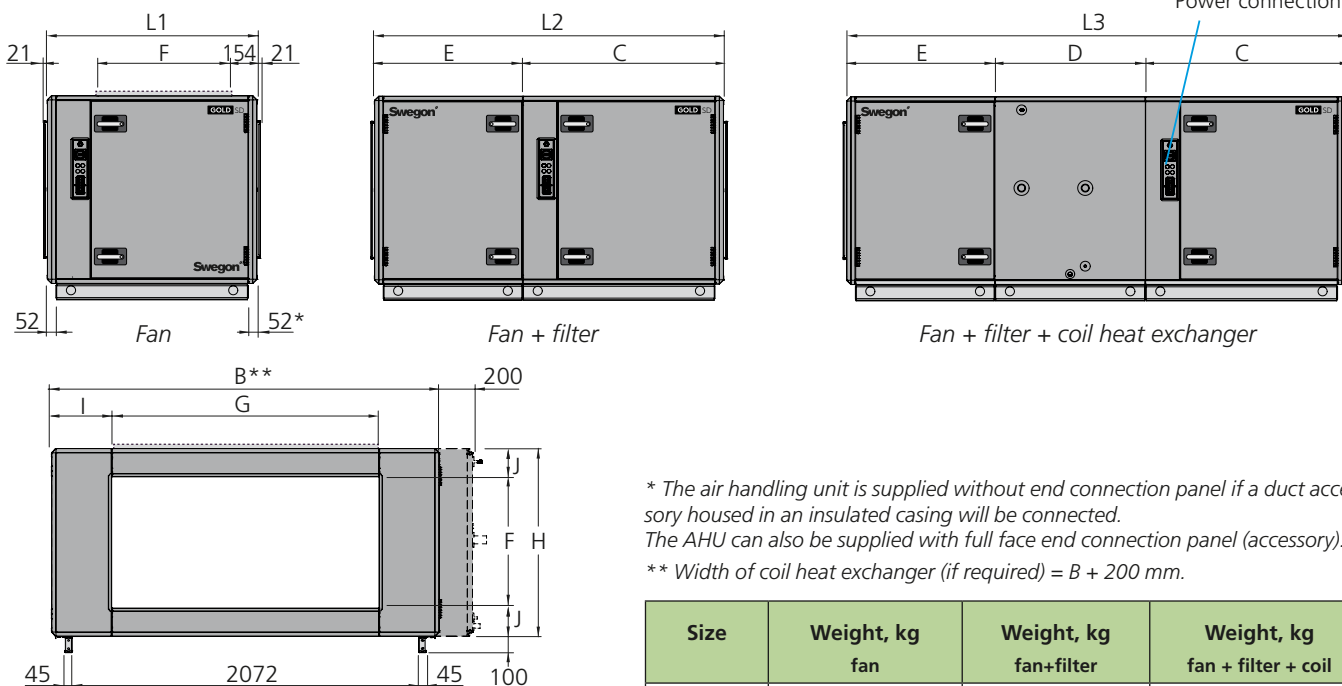
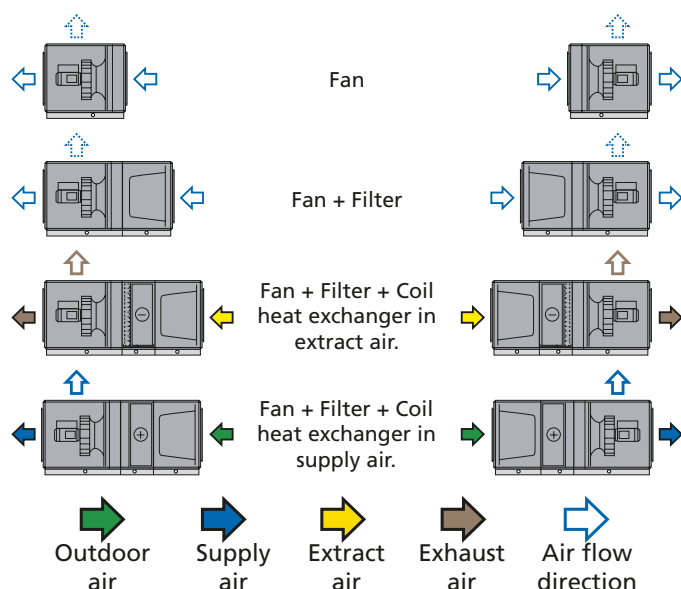
Duct connection options

A: Specify right-hand or left-hand version when ordering.

B: Specify fan outlet for upward air discharge when placing orders (Does not apply to units installed outdoors).

Left-hand version

Right-hand version



* The air handling unit is supplied without end connection panel if a duct accessory housed in an insulated casing will be connected. The AHU can also be supplied with full face end connection panel (accessory).
 ** Width of coil heat exchanger (if required) = B + 200 mm.

Size	Weight, kg fan	Weight, kg fan+filter	Weight, kg fan + filter + coil
060	404-474	589-698	1131-1254

Size	L1	L2	L3	B	H	C	D	E	F	G	I	J
060	1253	2088	2988	2318	1144	1202	900	886	800	1600	359	172

Clear space for inspection

A clear space of 900 mm should be provided in front of the unit.

Power connection

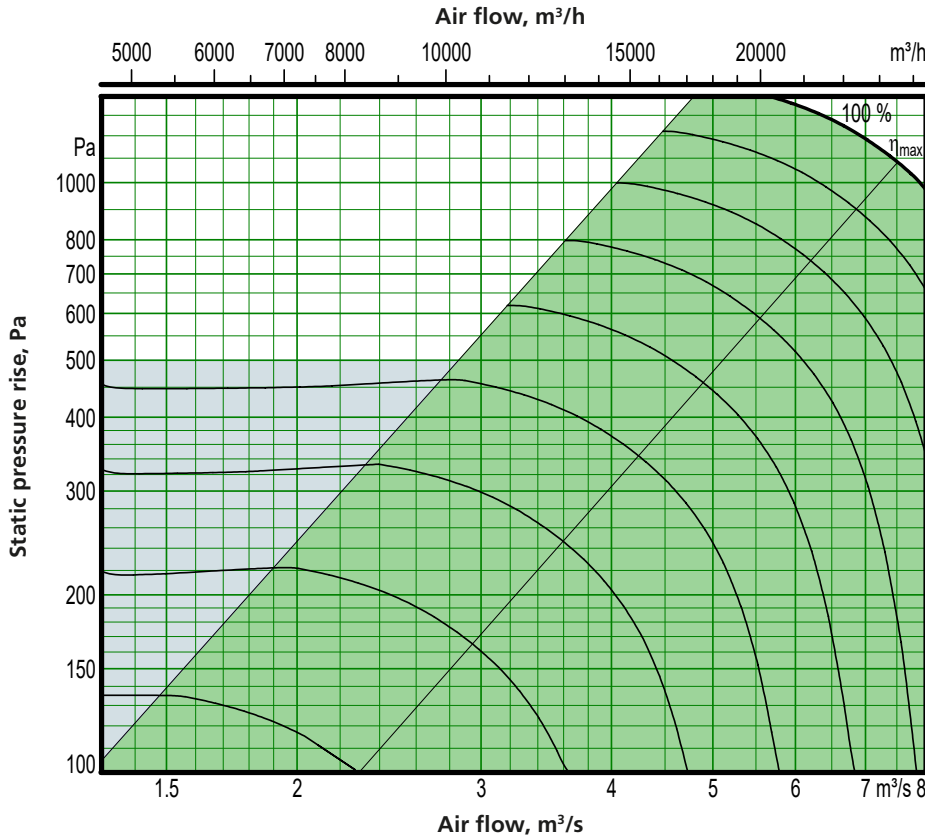
3-phase, 5-wire, 400 V -10/+15%, 50 Hz, 16 A (capacity variant 1) alt. 25 A (capacity variant 2)

Rated data per fan

Motor shaft power: 2 x 4.0 kW alt. 2 x 6.5 kW, motor control system: 3 x 400 V, 50 Hz

Sizing, Installation, Dimensions and Weights

GOLD SD, size 070



Motor shaft power: 2 x 6.5 kW (capacity variant 2)

- Recommended working range for sizing.
- If pressure regulation is used, the air flow can be regulated to zero.
- However this presupposes a certain static pressure drop in the ducting (approx. 50 Pa).

Min. and max. airflows

The flows specified refer to those that can be preset in the hand-held terminal. The practical flow limits are determined by the external pressure drop.

Size	Min. airflow (on airflow regulation)		Max. airflow	
	m³/h	m³/s	m³/h	m³/s
070	3600	1,00	28800	8,00

Exact sizing can be carried out in the AHU Design air handling unit selection program

Sizing, Installation, Dimensions and Weights

GOLD SD, size 070

Delivery and transport within the site

The GOLD SD 070 units are available in right-hand or left-hand version, as a fan section only, as a fan section and filter section or as a fan section, filter section and coil heat exchanger section.

The air handling unit can be supplied as one single unit or divided when it consists of a fan section and filter section. If the unit consists of a fan section, filter section and coil heat exchanger, it is supplied as two units. The one unit then consists of a fan section and coil heat exchanger and the other unit consists of a filter section.

The unit sections are joined together/split by means of bolts. The electrical and control cables between the unit sections have quick-fit connectors.

The GOLD SD can be used as a supply air or an extract air handling unit. If both supply air and extract air handling units are used in a ventilation system, the supply air unit is equipped with a control unit, but not the extract air unit. A communication cable is used to connect both air handling units to one another making it possible to control both units.

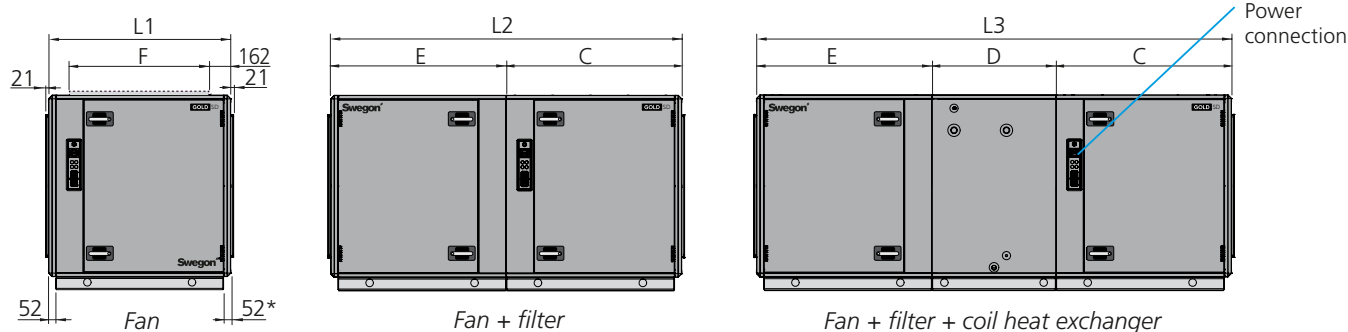
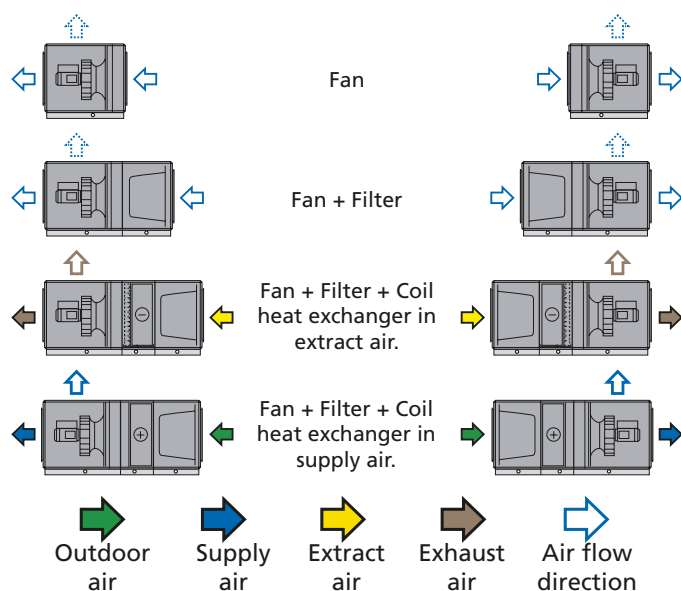
Duct connection options

A: Specify right-hand or left-hand version when ordering.

B: Specify fan outlet for upward air discharge when placing orders (Does not apply to units installed outdoors).

Left-hand version

Right-hand version



* The air handling unit is supplied without end connection panel if a duct accessory housed in an insulated casing will be connected.

The AHU can also be supplied with full face end connection panel (accessory).

** Width of coil heat exchanger (if required) = B + 200 mm.

Size	Weight, kg fan	Weight, kg fan+filter	Weight, kg fan + filter + coil
070	496-578	791-918	1494-1633

Size	L1	L2	L3	B	H	C	D	E	F	G	I	J
070	1325	2547	3447	2637	1320	1273.5	900	1273.5	1000	1800	418.5	160

Clear space for inspection

A clear space of 900 mm should be provided in front of the unit.

Power connection

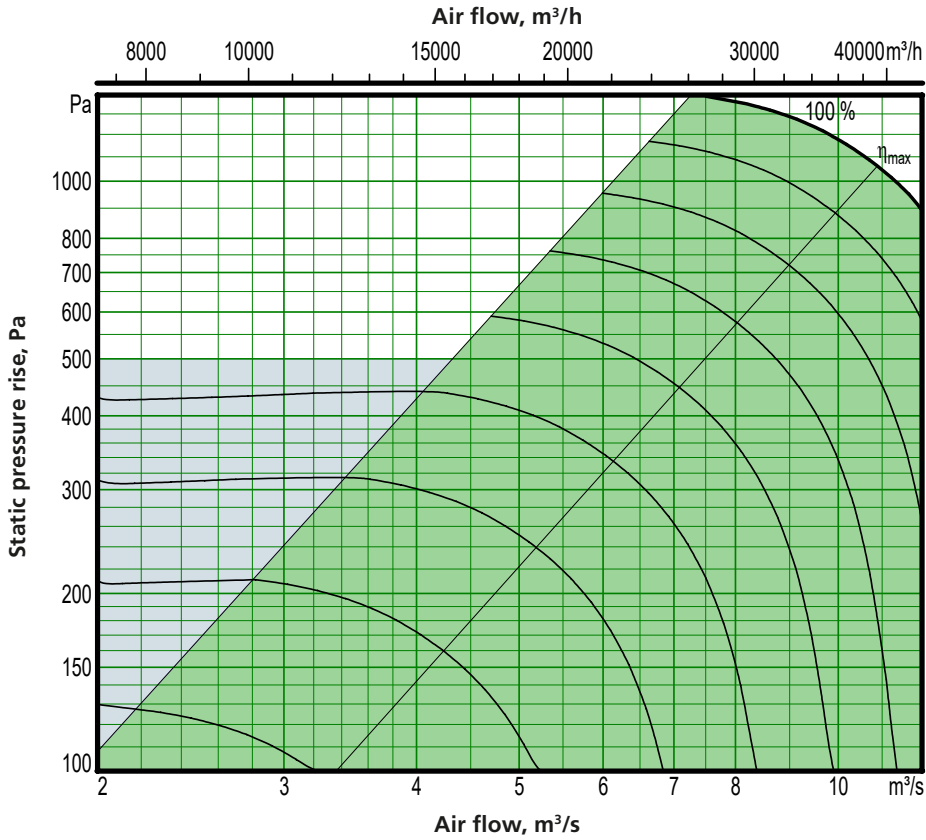
3-phase, 5-wire, 400 V -10/+15%, 50 Hz, 16 A (capacity variant 1) alt. 25 A (capacity variant 2)

Rated data per fan

Motor shaft power: 2 x 4.0 kW alt. 2 x 6.5 kW, motor control system: 3 x 400 V, 50 Hz

Sizing, Installation, Dimensions and Weights

GOLD SD, size 080



Motor shaft power: 2 x 10 kW (capacity variant 2)

- Recommended working range for sizing.
- If pressure regulation is used, the air flow can be regulated to zero.
- However this presupposes a certain static pressure drop in the ducting (approx. 50 Pa).

Min. and max. airflows

The flows specified refer to those that can be preset in the hand-held terminal. The practical flow limits are determined by the external pressure drop.

Size	Min. airflow (on airflow regulation)		Max. airflow	
	m³/h	m³/s	m³/h	m³/s
080	5400	1,50	43200	12.0

Exact sizing can be carried out in the AHU Design air handling unit selection program

Sizing, Installation, Dimensions and Weights

GOLD SD, size 080

Delivery and transport within the site

The GOLD SD 080 units are available in right-hand or left-hand version, as a fan section only, as a fan section and filter section or as a fan section, filter section and coil heat exchanger section.

The air handling unit can be supplied as one single unit or divided when it consists of a fan section and filter section. If the unit consists of a fan section, filter section and coil heat exchanger, it is supplied as two units. The one unit then consists of a fan section and coil heat exchanger and the other unit consists of a filter section.

The unit sections are joined together/split by means of bolts. The electrical and control cables between the unit sections have quick-fit connectors.

The GOLD SD can be used as a supply air or an extract air handling unit. If both supply air and extract air handling units are used in a ventilation system, the supply air unit is equipped with a control unit, but not the extract air unit. A communication cable is used to connect both air handling units to one another making it possible to control both units.

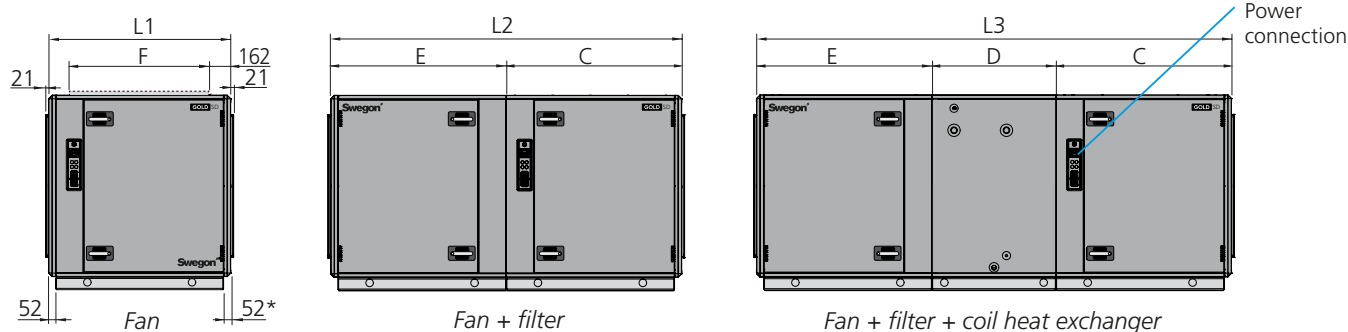
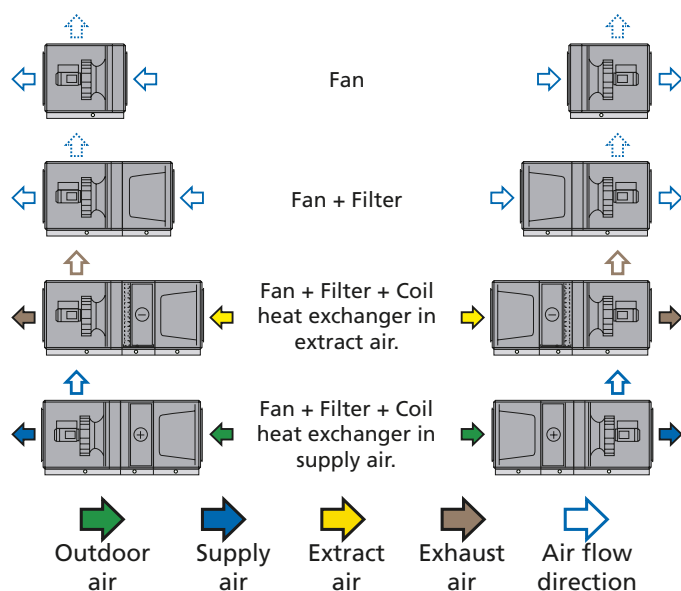
Duct connection options

A: Specify right-hand or left-hand version when ordering.

B: Specify fan outlet for upward air discharge when placing orders (Does not apply to units installed outdoors).

Left-hand version

Right-hand version



* The air handling unit is supplied without end connection panel if a duct accessory housed in an insulated casing will be connected.

The AHU can also be supplied with full face end connection panel (accessory).

** Width of coil heat exchanger (if required) = B + 200 mm.

Size	Weight, kg fan	Weight, kg fan+filter	Weight, kg fan + filter + coil
080	523-623	818-963	1521-1678

Size	L1	L2	L3	B	H	C	D	E	F	G	I	J
080	1325	2547	3447	2637	1320	1273.5	900	1273.5	1000	1800	418.5	160

Clear space for inspection

A clear space of 900 mm should be provided in front of the unit.

Power connection

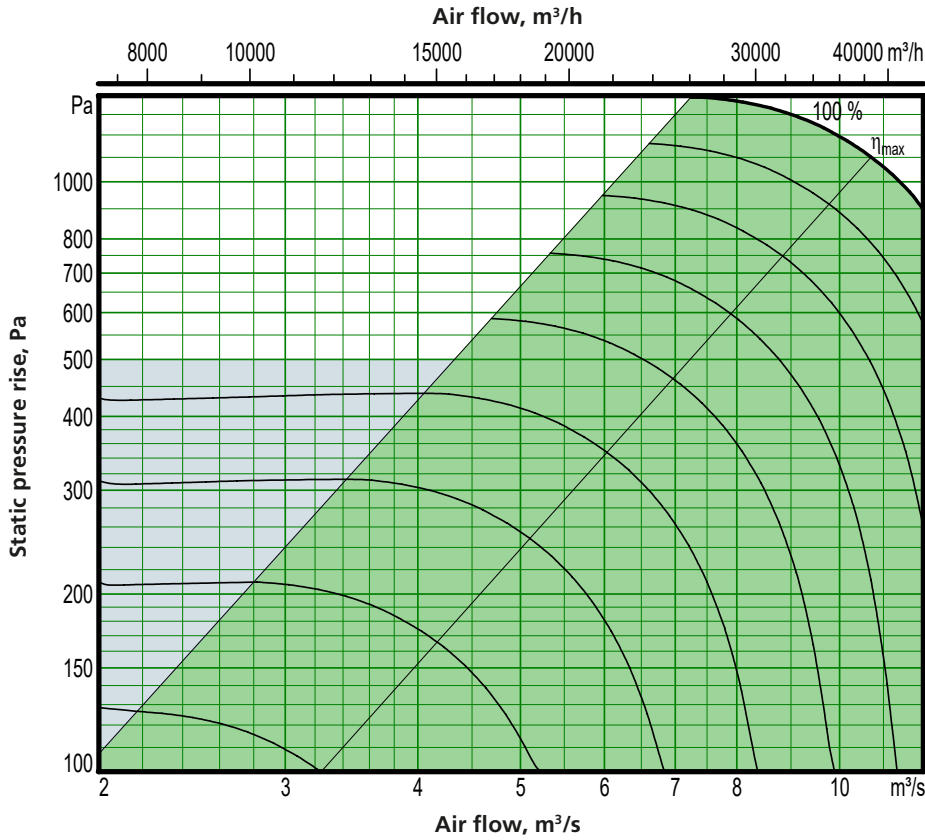
3-phase, 5-wire, 400 V -10/+15%, 50 Hz, 25 A (capacity variant 1) or 40 A (capacity variant 2)

Rated data per fan

Motor shaft power: 2 x 6.5 kW alt. 2 x 10 kW, motor control system: 3 x 400 V, 50 Hz

Sizing, installation, dimensions and weights

GOLD SD, size 100



Motor shaft power: 2 x 10 kW (capacity variant 2)

- Recommended working range for sizing.
- If pressure regulation is used, the air flow can be regulated to zero.
- However this presupposes a certain static pressure drop in the ducting (approx. 50 Pa).

Min. and max. air flows

The flows specified refer to those that can be preset in the hand-held terminal. The practical flow limits are determined by the external pressure drop.

Size	Min. airflow (on airflow regulation)		Max. airflow	
	m³/h	m³/s	m³/h	m³/s
100	5400	1,50	43200	12.0

Exact sizing can be carried out in the AHU Design air handling unit selection program

Sizing, installation, dimensions and weights

GOLD SD, size 100

Delivery and transport within the site

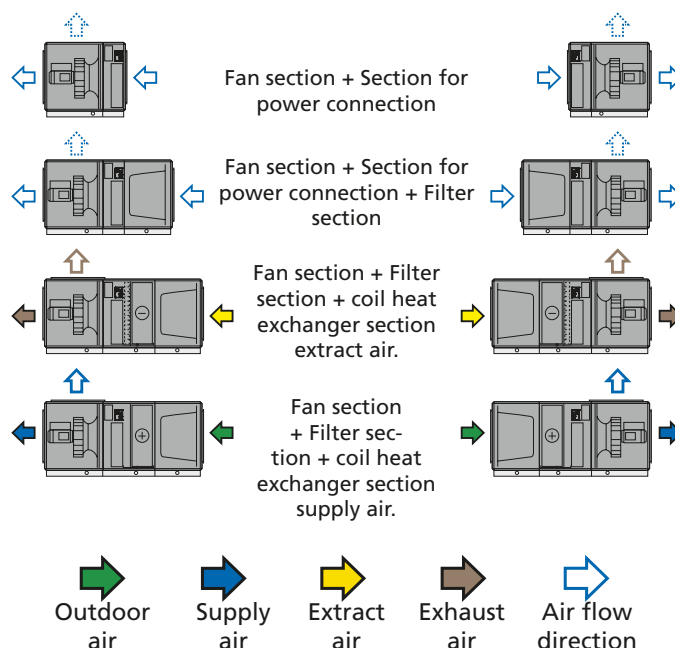
The GOLD SD 100 units are available in right-hand or left-hand version, as a fan section only, as a fan section and filter section or as a fan section, filter section and coil heat exchanger section.

A special section for power connection is required for only fan section or fan section + filter section. For fan section + filter section + coil heat exchanger section, the power is connected to the section for coil heat exchanger.

If the electrical connection section is included in the delivery, this is always fitted with the fan section. Other air handling unit parts are always supplied separately.

The unit sections are jointed together/split by means of bolts. The electrical and control cables between the unit sections have quick-fit connectors.

The GOLD SD can be used as a supply air or an extract air handling unit. If both supply air and extract air handling units are used in a ventilation system, the supply air unit is equipped with a control unit, but not the extract air unit. A communication cable is used to connect both air handling units to one another making it possible to control both units.

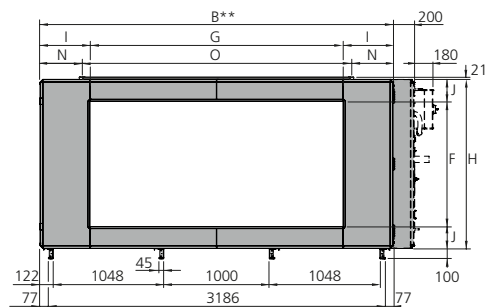
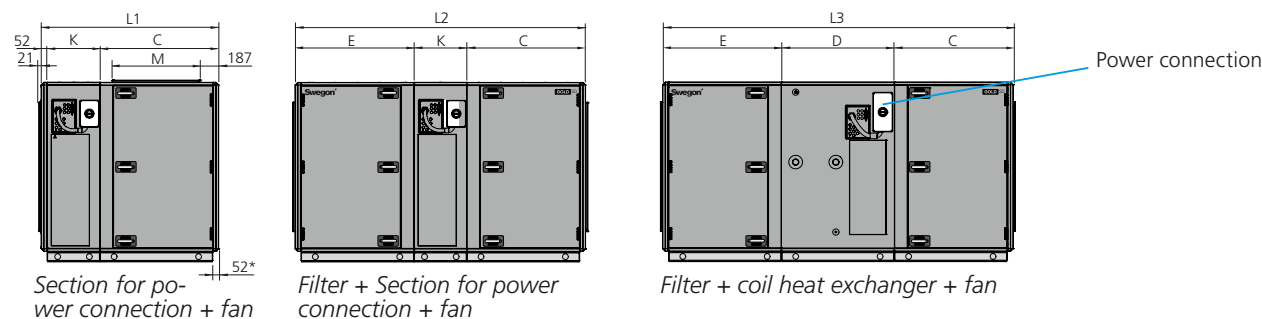


Duct connection options

A: Specify right-hand or left-hand version when ordering.

B: Specify fan outlet for upward air discharge when placing orders (Does not apply to units installed outdoors).

N.B.! Duct connection size: 2500 x 800 mm.



* The air handling unit is supplied without end connection panel if a duct accessory housed in an insulated casing will be connected.

The AHU can also be supplied with full face end connection panel (accessory).

** Width of coil heat exchanger (if required) = B + 200 mm.

Size	Weight, kg section for power conn. + fan	Weight, kg filter + section for power conn. + fan	Weight, kg filter + coil + fan
100	861-937	1263-1477	2133-2372

Size	L1	L2	L3	B	H	C	D	E	F	G	I	J	K	M	N	O
100	1673	2744	3314	3340	1620	1122	1070	1122	1200	2400	470	210	500	800	420	2500

Clear space for inspection

A clear space of 1,000 mm should be provided in front of the unit.

Power connection

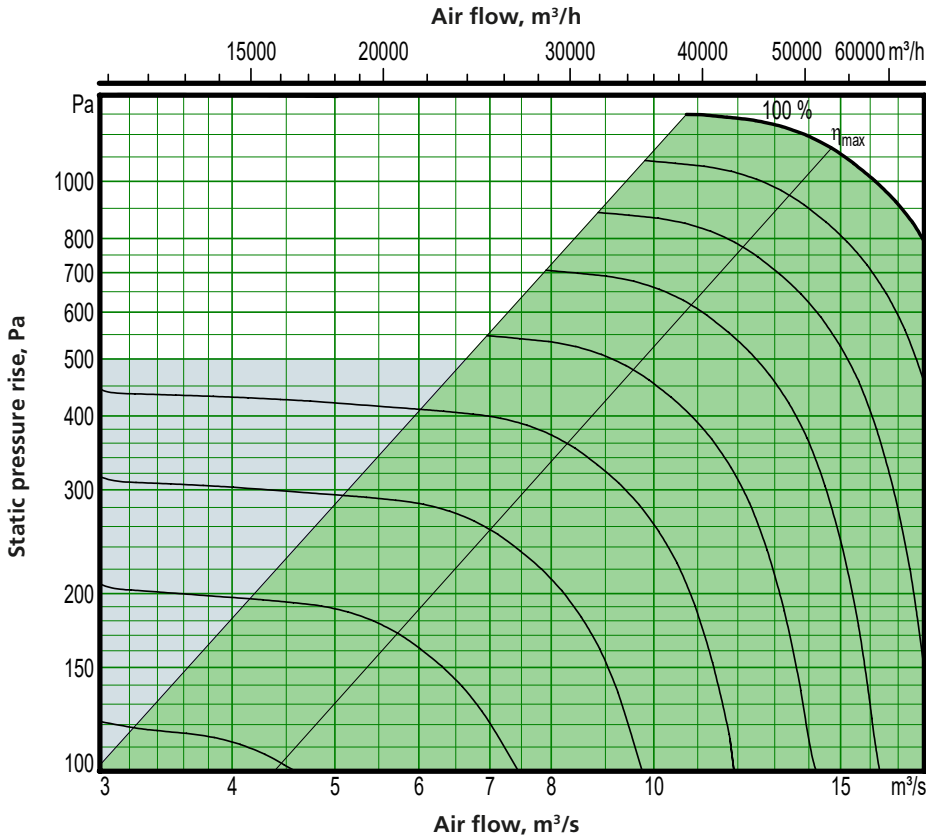
3-phase, 5-wire, 400 V -10/+15%, 50 Hz, 25 A (capacity variant 1) or 40 A (capacity variant 2)

Rated data per fan

Motor shaft power: 2 x 6.5 kW alt. 2 x 10 kW, motor control system: 3 x 400 V, 50 Hz

Sizing, installation, dimensions and weights

GOLD SD, size 120



Motor shaft power: 3 x 10 kW (capacity variant 2)

- Recommended working range for sizing.
- If pressure regulation is used, the air flow can be regulated to zero.
- However this presupposes a certain static pressure drop in the ducting (approx. 50 Pa).

Min. and max. air flows

The flows specified refer to those that can be preset in the hand-held terminal. The practical flow limits are determined by the external pressure drop.

Size	Min. airflow (on airflow regulation)		Max. airflow	
	m ³ /h	m ³ /s	m ³ /h	m ³ /s
120	9000	2,50	64800	18.0

Exact sizing can be carried out in the AHU Design air handling unit selection program

Sizing, installation, dimensions and weights

GOLD SD, size 120

Delivery and transport within the site

The GOLD SD 120 units are available in right-hand or left-hand version, as a fan section only, as a fan section and filter section or as a fan section, filter section and coil heat exchanger section.

A special section for power connection is required for only fan section or fan section + filter section. For fan section + filter section + coil heat exchanger section, the power is connected to the section for coil heat exchanger.

If the electrical connection section is included in the delivery, this is always fitted with the fan section. Other air handling unit parts are always supplied separately.

The unit sections are jointed together/split by means of bolts. The electrical and control cables between the unit sections have quick-fit connectors.

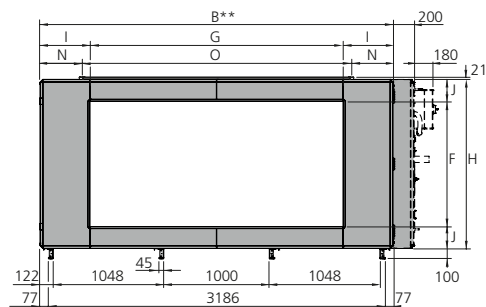
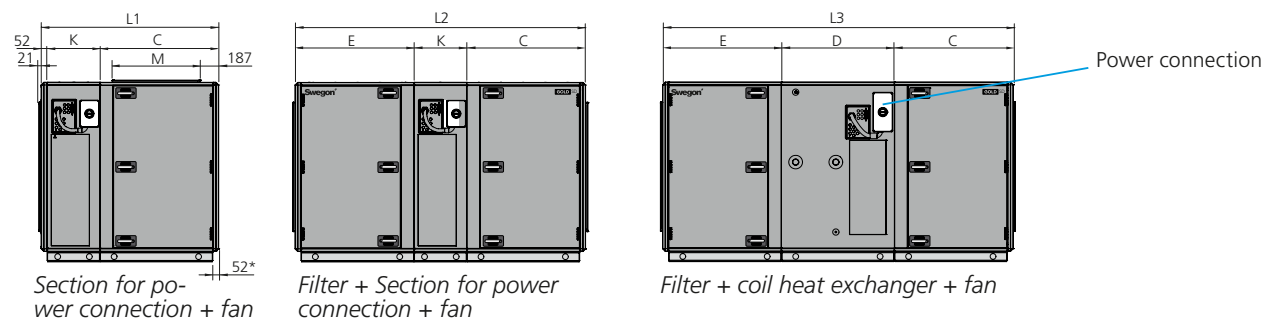
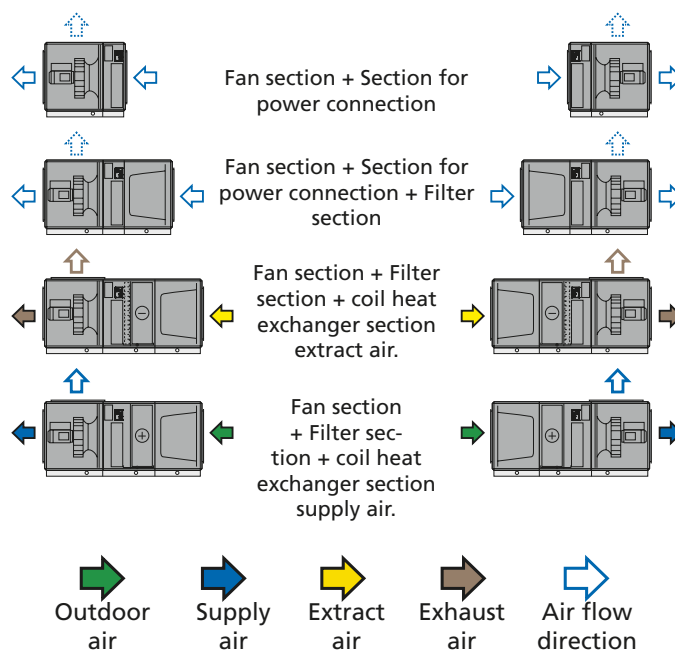
The GOLD SD can be used as a supply air or an extract air handling unit. If both supply air and extract air handling units are used in a ventilation system, the supply air unit is equipped with a control unit, but not the extract air unit. A communication cable is used to connect both air handling units to one another making it possible to control both units.

Duct connection options

A: Specify right-hand or left-hand version when ordering.

B: Specify fan outlet for upward air discharge when placing orders (Does not apply to units installed outdoors).

N.B.! Duct connection size: 2500 x 800 mm.



* The air handling unit is supplied without end connection panel if a duct accessory housed in an insulated casing will be connected.

The AHU can also be supplied with full face end connection panel (accessory).

** Width of coil heat exchanger (if required) = B + 200 mm.

Size	Weight, kg section for power conn. + fan	Weight, kg filter + section for power conn. + fan	Weight, kg filter + coil + fan
120	961-1046	1363-1586	2233-2481

Size	L1	L2	L3	B	H	C	D	E	F	G	I	J	K	M	N	O
120	1673	2744	3314	3340	1620	1122	1070	1122	1200	2400	470	210	500	800	420	2500

Clear space for inspection

A clear space of 1,000 mm should be provided in front of the unit.

Power connection

3-phase, 5-wire, 400 V -10/+15%, 50 Hz, 40 A (capacity variant 1) or 63 A (capacity variant 2)

Rated data per fan

Motor shaft power: 3 x 6.5 kW or 3 x 10 kW, motor control system: 3 x 400 V, 50 Hz

